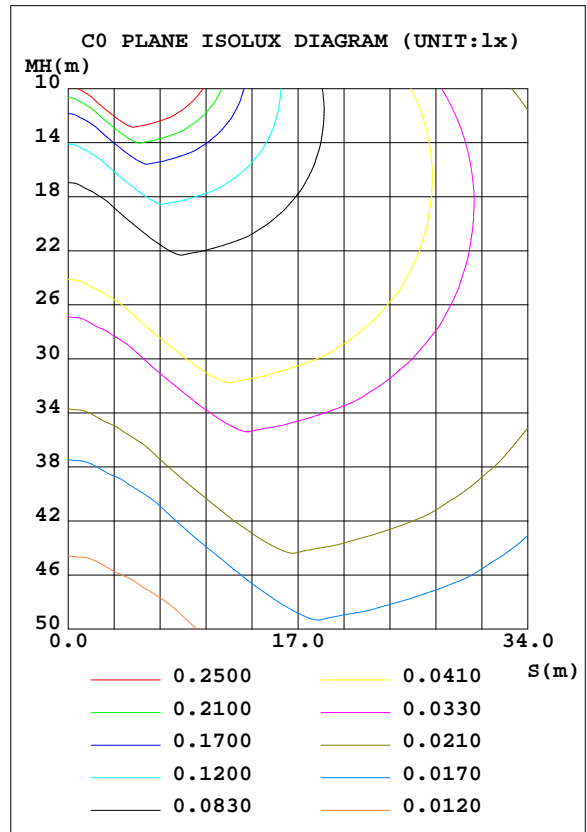
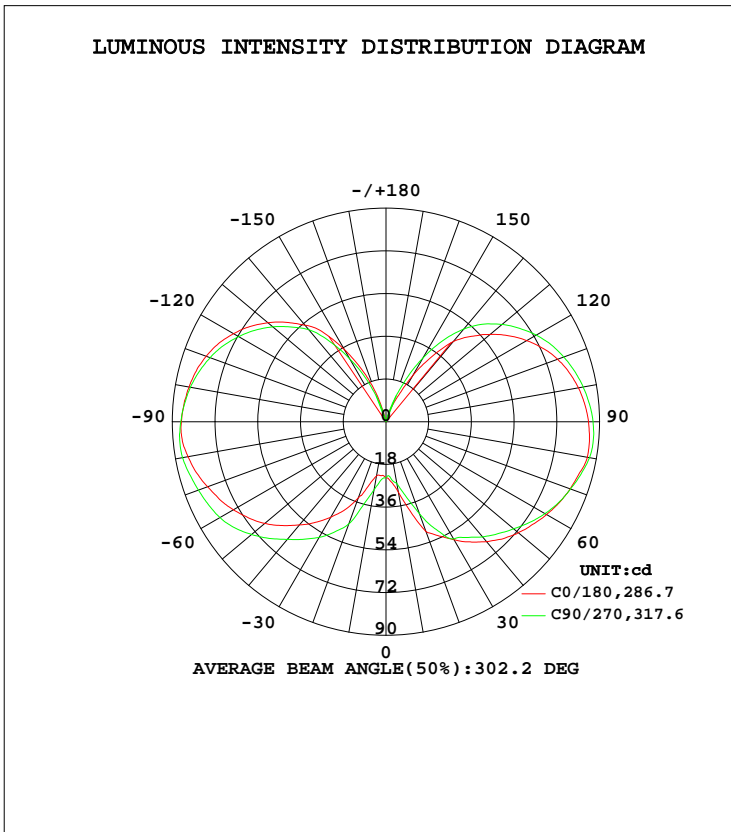


LUMINAIRE PHOTOMETRIC TEST REPORT

Test:U:229.9V I:0.0549A P:6.589W PF:0.5218 Freq:50.01Hz Lamp Flux:828.099x1 lm		
NAME:	TYPE:	WEIGHT:
SPEC.:9aFA-A806SG-G1-03	DIM.:	SERIAL No.:A1900723A001
MFR.: EVERFINE	SUR.:	Shielding Angle:

DATA OF LAMP		PHOTOMETRIC DATA Eff: 125.68 lm/W			
MODEL		I _{max} (cd)	92.61	S/MH(C0/180)	3.03
NOMINAL POWER(W)		LOR(%)	100.0	S/MH(C90/270)	3.12
RATED VOLTAGE(V)		TOTAL FLUX(lm)	828.10	η UP, DN(C0-180)	23.3, 26.9
NOMINAL FLUX(lm)	828.099	CIE CLASS	DIFFUSE	η UP, DN(C180-360)	23.3, 26.6
LAMPS INSIDE	1	η up(%)	46.6	CIBSE SHR NOM	2.00
TEST VOLTAGE(V)		η down(%)	53.4	CIBSE SHR MAX	2.00



C Range: 0 - 360DEG
 C Interval: 22.5DEG
 Test Speed: HIGH
 Temperature:24.6DEG
 Operators:KDD
 Test Date:2019-01-22

γ Range: 0 - 180DEG
 γ Interval: 0.5DEG
 Test System:EVERFINE GO-R5000_V2 SYSTEM V2.0.363T
 Humidity:37%
 Test Distance:1.509m [K=1.0000]
 Remarks:

ZONAL FLUX DIAGRAM

ZONAL FLUX DIAGRAM:

γ	C0	C45	C90	C135	C180	C225	C270	C315	γ	Φ zone	Φ total	%lum,lamp
10	30.11	28.47	26.40	24.51	23.22	25.24	29.10	29.91	0- 10	2.414	2.414	0.29,0.29
20	49.07	38.83	41.17	33.34	34.12	33.35	45.73	41.67	10- 20	9.485	11.90	1.44,1.44
30	57.40	49.58	57.02	44.54	46.42	45.13	56.24	52.81	20- 30	21.08	32.98	3.98,3.98
40	65.95	60.72	63.34	56.82	56.73	57.01	64.76	63.31	30- 40	35.36	68.35	8.25,8.25
50	72.77	69.97	70.22	66.38	66.70	65.42	73.91	71.85	40- 50	50.93	119.3	14.4,14.4
60	78.17	77.34	77.38	72.95	74.20	71.80	80.76	78.39	50- 60	65.69	185.0	22.3,22.3
70	82.63	82.04	82.78	77.59	80.00	76.34	84.11	82.29	60- 70	78.08	263.1	31.8,31.8
80	86.12	84.93	87.09	80.77	84.71	79.82	87.03	84.55	70- 80	87.19	350.3	42.3,42.3
90	85.29	83.40	87.24	81.86	86.22	81.58	86.48	82.77	80- 90	92.12	442.4	53.4,53.4
100	82.34	79.39	84.37	80.45	84.24	80.57	83.69	79.10	90-100	90.92	533.3	64.4,64.4
110	76.99	73.86	79.76	77.31	80.64	77.07	78.90	73.65	100-110	84.63	617.9	74.6,74.6
120	68.46	67.01	73.11	70.41	74.22	70.61	71.75	66.48	110-120	73.67	691.6	83.5,83.5
130	57.27	59.04	63.79	61.07	64.94	61.51	62.21	56.05	120-130	59.13	750.7	90.7,90.7
140	44.15	44.00	51.02	48.61	53.15	47.25	50.61	42.23	130-140	42.48	793.2	95.8,95.8
150	22.25	24.50	30.89	31.69	35.20	29.10	30.63	28.93	140-150	24.52	817.7	98.7,98.7
160	5.776	5.641	9.179	15.04	14.26	13.97	9.940	7.260	150-160	9.306	827.0	99.9,99.9
170	0.1681	0.1405	0.2153	0.2595	0.2805	0.2682	0.2197	0.1633	160-170	1.051	828.1	100,100
180	0.0778	0.0757	0.0819	0.0791	0.0775	0.0785	0.0753	0.0747	170-180	0.0113	828.1	100,100
DEG	LUMINOUS INTENSITY:cd									UNIT:lm		

Conical surface Flux(90deg): 91.882 lm

%lum = 11.1%
%lamp = 11.1%

Conical surface Flux(120deg): 184.98 lm

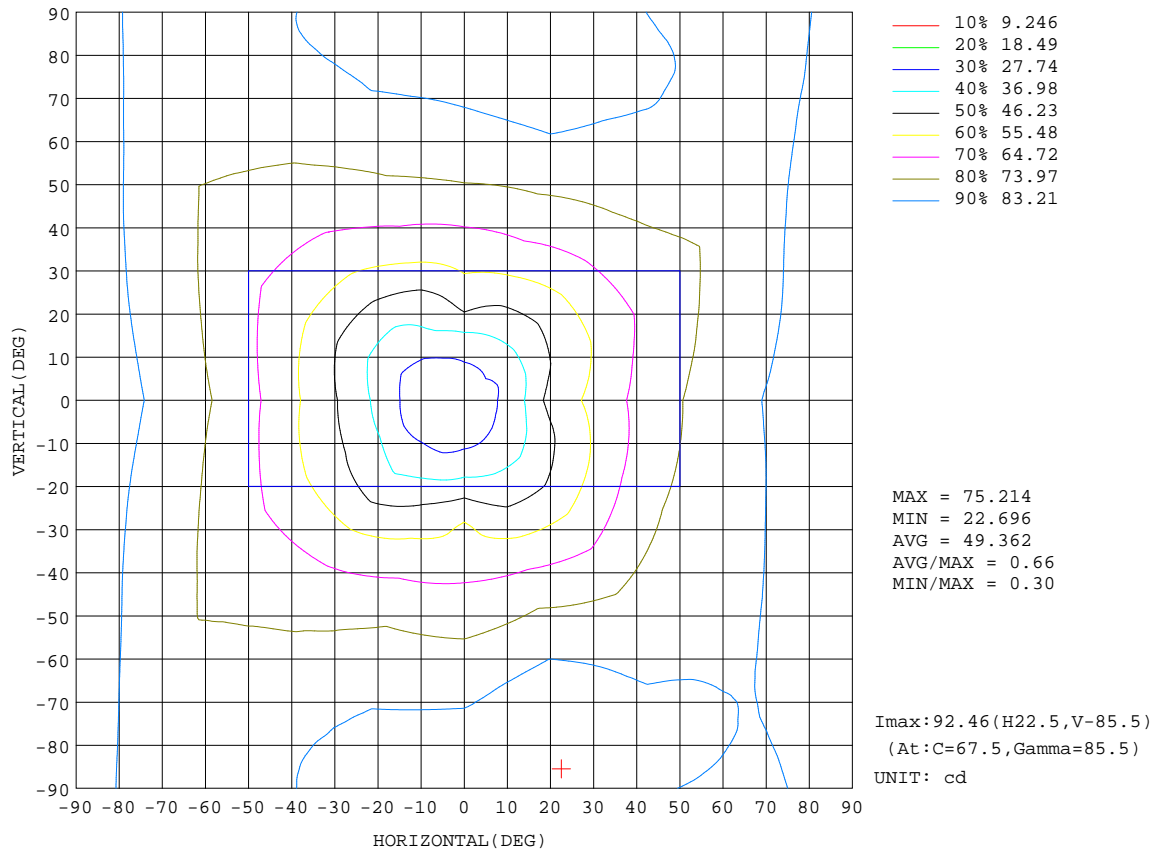
%lum = 22.3%
%lamp = 22.3%

C Range: 0 - 360DEG
C Interval: 22.5DEG
Test Speed: HIGH
Temperature:24.6DEG
Operators:KDD
Test Date:2019-01-22

γ Range: 0 - 180DEG
γ Interval: 0.5DEG
Test System:EVERFINE GO-R5000_V2 SYSTEM V2.0.363T
Humidity:37%
Test Distance:1.509m [K=1.0000]
Remarks:

ISOCANDELA DIAGRAM

Test:U:229.9V I:0.0549A P:6.589W PF:0.5218 Freq:50.01Hz Lamp Flux:828.099x1 lm		
NAME:	TYPE:	WEIGHT:
SPEC.:9aFA-A806SG-G1-03	DIM.:	SERIAL No.:A1900723A001
MFR.: EVERFINE	SUR.:	Shielding Angle:

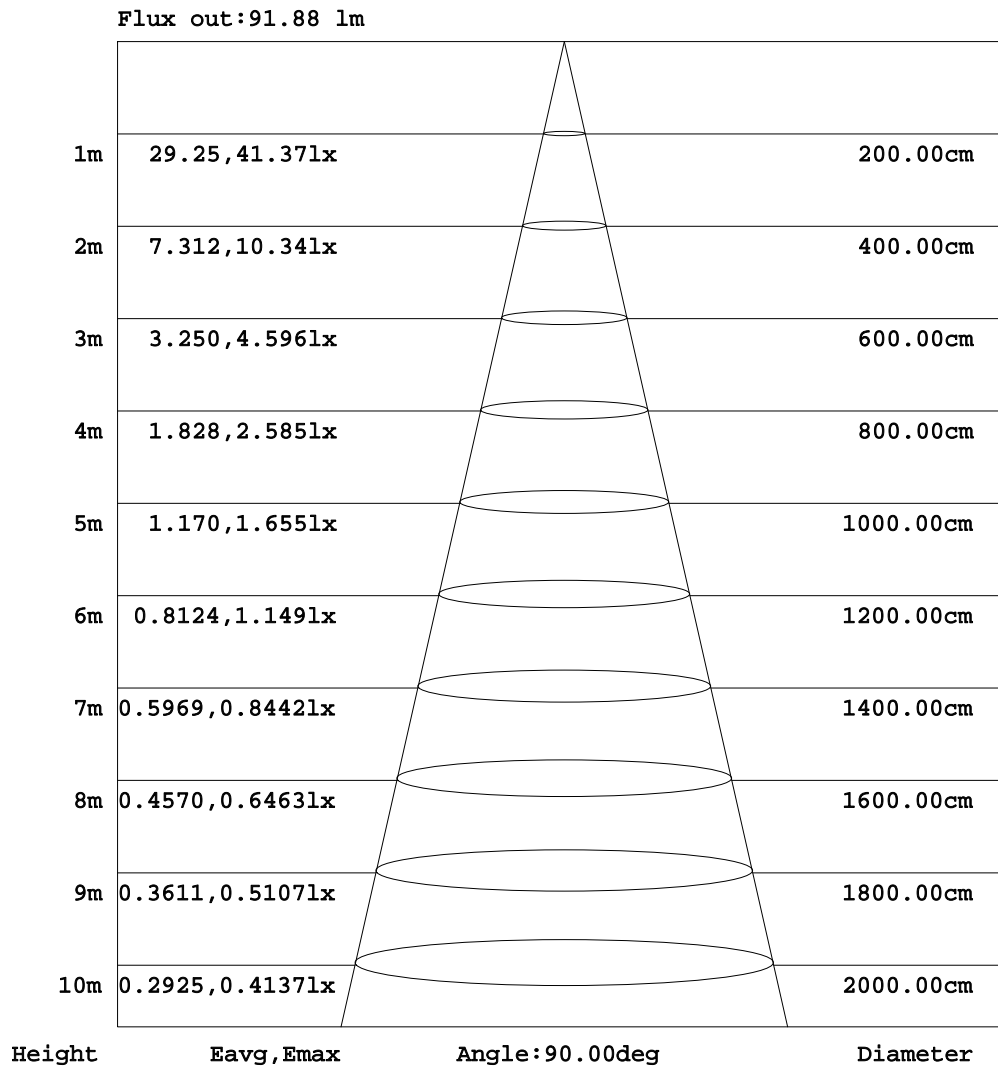


C Range: 0 - 360DEG
 C Interval: 22.5DEG
 Test Speed: HIGH
 Temperature:24.6DEG
 Operators:KDD
 Test Date:2019-01-22

γ Range: 0 - 180DEG
 γ Interval: 0.5DEG
 Test System:EVERFINE GO-R5000_V2 SYSTEM V2.0.363T
 Humidity:37%
 Test Distance:1.509m [K=1.0000]
 Remarks:

AAI Figure

Test:U:229.9V I:0.0549A P:6.589W PF:0.5218 Freq:50.01Hz Lamp Flux:828.099x1 lm		
NAME:	TYPE:	WEIGHT:
SPEC.:9aFA-A806SG-G1-03	DIM.:	SERIAL No.:A1900723A001
MFR.: EVERFINE	SUR.:	Shielding Angle:



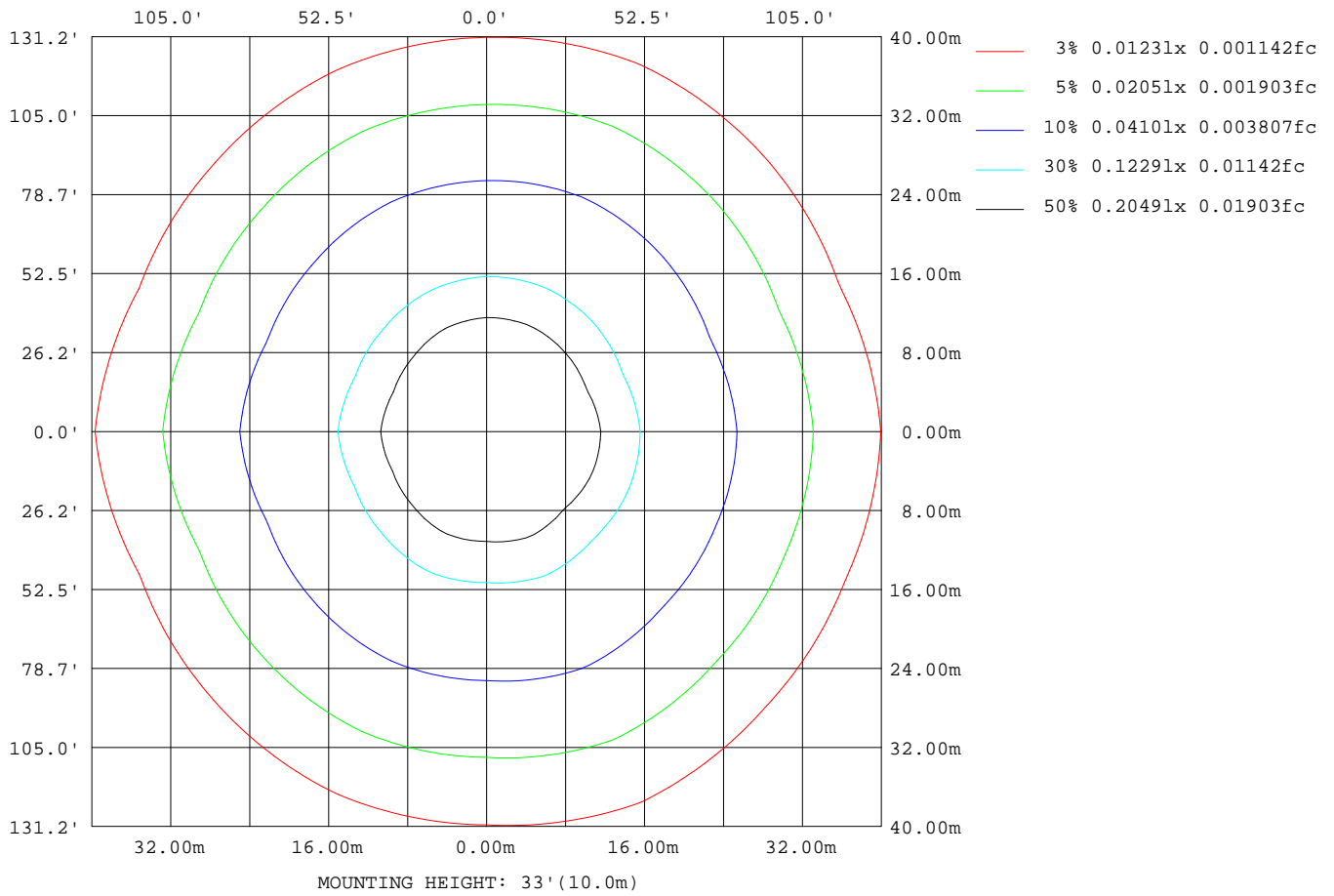
Note:The Curves indicate the illuminated area and the average illumination when the luminaire is at different distance.

C Range: 0 - 360DEG
 C Interval: 22.5DEG
 Test Speed: HIGH
 Temperature:24.6DEG
 Operators:KDD
 Test Date:2019-01-22

γ Range: 0 - 180DEG
 γ Interval: 0.5DEG
 Test System:EVERFINE GO-R5000_V2 SYSTEM V2.0.363T
 Humidity:37%
 Test Distance:1.509m [K=1.0000]
 Remarks:

ISOLUX DIAGRAM

Test:U:229.9V I:0.0549A P:6.589W PF:0.5218 Freq:50.01Hz Lamp Flux:828.099x1 lm		
NAME:	TYPE:	WEIGHT:
SPEC.:9aFA-A806SG-G1-03	DIM.:	SERIAL No.:A1900723A001
MFR.: EVERFINE	SUR.:	Shielding Angle:



C Range: 0 - 360DEG
 C Interval: 22.5DEG
 Test Speed: HIGH
 Temperature:24.6DEG
 Operators:KDD
 Test Date:2019-01-22

γ Range: 0 - 180DEG
 γ Interval: 0.5DEG
 Test System:EVERFINE GO-R5000_V2 SYSTEM V2.0.363T
 Humidity:37%
 Test Distance:1.509m [K=1.0000]
 Remarks:

LED Avg.L Report

Test:U:229.9V I:0.0549A P:6.589W PF:0.5218 Freq:50.01Hz Lamp Flux:828.099x1 lm		
NAME:	TYPE:	WEIGHT:
SPEC.:9aFA-A806SG-G1-03	DIM.:	SERIAL No.:A1900723A001
MFR.: EVERFINE	SUR.:	Shielding Angle:

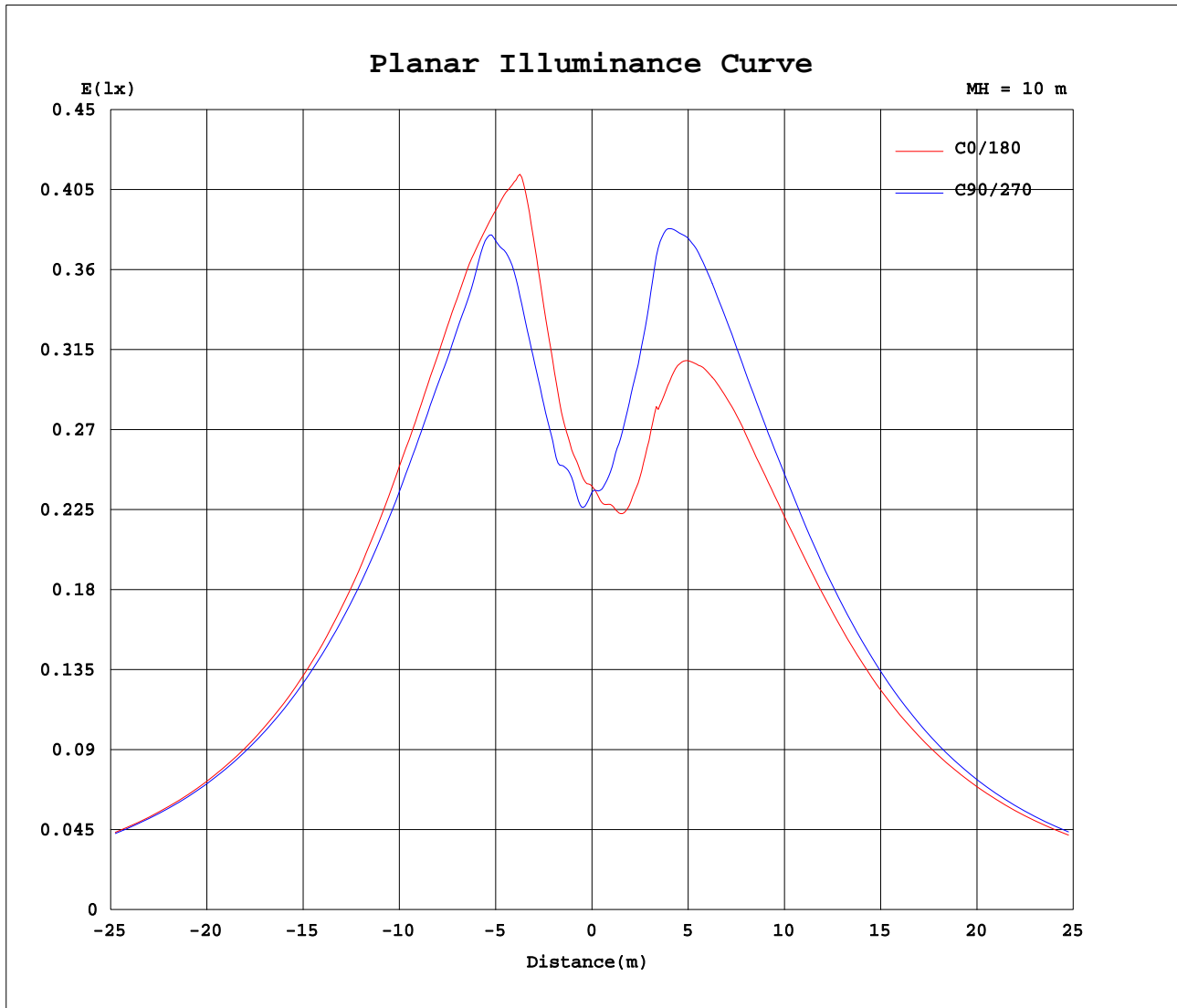
AvgL	cd/m2
L_0~180(65)av	34607
L_0~180(75)av	59747
L_0~180(85)av	182999
L_90~270(65)av	35697
L_90~270(75)av	61081
L_90~270(85)av	185816
L_45(65)av	33997
L_45(75)av	58232
L_45(85)av	176206

Standard: GB/T 29293-2012

C Range: 0 - 360DEG
 C Interval: 22.5DEG
 Test Speed: HIGH
 Temperature:24.6DEG
 Operators:KDD
 Test Date:2019-01-22

γ Range: 0 - 180DEG
 γ Interval: 0.5DEG
 Test System:EVERFINE GO-R5000_V2 SYSTEM V2.0.363T
 Humidity:37%
 Test Distance:1.509m [K=1.0000]
 Remarks:

Planar Illuminance Curve



C Range: 0 - 360DEG
 C Interval: 22.5DEG
 Test Speed: HIGH
 Temperature: 24.6DEG
 Operators: KDD
 Test Date: 2019-01-22

γ Range: 0 - 180DEG
 γ Interval: 0.5DEG
 Test System: EVERFINE GO-R5000_V2 SYSTEM V2.0.363T
 Humidity: 37%
 Test Distance: 1.509m [K=1.0000]
 Remarks:

LUMINOUS DISTRIBUTION INTENSITY DATA

Test:U:229.9V I:0.0549A P:6.589W PF:0.5218 Freq:50.01Hz Lamp Flux:828.099x1 lm		
NAME:	TYPE:	WEIGHT:
SPEC.:9aFA-A806SG-G1-03	DIM.:	SERIAL No.:A1900723A001
MFR.: EVERFINE	SUR.:	Shielding Angle:

Table--1

UNIT: cd

C(DEG) γ (DEG)	0	22.5	45	67.5	90	112.5	135	157.5	180	202.5	225	247.5	270	292.5	315	337.5			
0	23.6	23.6	23.6	23.6	23.6	23.6	23.6	23.6	23.6	23.6	23.6	23.6	23.6	23.6	23.6	23.6			
5	25.4	25.2	24.7	24.0	24.0	23.6	23.1	22.9	22.8	23.2	24.1	24.6	24.8	25.4	26.4	26.0			
10	30.1	30.2	28.5	27.4	26.4	24.9	24.5	24.9	23.2	24.5	25.2	27.2	29.1	29.8	29.9	29.4			
15	38.7	36.0	33.0	32.8	32.6	30.1	28.8	27.7	27.6	26.8	29.1	33.6	35.8	35.8	35.6	36.5			
20	49.1	42.3	38.8	38.9	41.2	37.7	33.3	34.9	34.1	31.5	33.4	39.6	45.7	42.2	41.7	44.1			
25	53.1	48.2	43.9	44.4	50.1	45.4	38.9	42.3	40.9	37.6	38.9	43.3	51.2	48.6	47.1	49.7			
30	57.4	53.2	49.6	50.5	57.0	51.1	44.5	46.5	46.4	43.4	45.1	50.1	56.2	55.0	52.8	53.8			
35	61.8	58.9	55.3	57.0	59.5	56.8	50.8	50.8	51.7	49.3	51.3	57.0	60.4	60.7	58.1	58.8			
40	66.0	64.1	60.7	63.2	63.3	61.8	56.8	55.7	56.7	54.7	57.0	62.4	64.8	66.0	63.3	63.1			
45	69.7	68.6	65.4	68.7	66.7	66.4	62.3	60.5	61.8	59.2	61.8	67.0	69.5	70.4	67.9	66.1			
50	72.8	72.7	70.0	73.7	70.2	70.7	66.4	64.2	66.7	62.7	65.4	71.1	73.9	74.4	71.8	69.0			
55	75.4	75.8	74.0	77.9	73.9	74.7	69.8	67.2	70.7	65.8	68.8	74.5	77.9	78.1	75.5	71.6			
60	78.2	78.0	77.3	81.9	77.4	78.0	72.9	69.8	74.2	68.7	71.8	77.5	80.8	81.6	78.4	73.6			
65	80.6	79.5	79.9	85.6	80.3	80.5	75.6	71.8	77.4	70.8	74.4	80.2	82.6	84.4	80.4	75.5			
70	82.6	80.7	82.0	88.1	82.8	82.5	77.6	73.6	80.0	72.7	76.3	82.3	84.1	86.4	82.3	77.2			
75	84.3	81.5	84.0	90.0	85.1	84.6	79.3	75.0	82.7	74.3	78.2	83.8	85.6	88.2	84.0	78.6			
80	86.1	82.2	84.9	91.9	87.1	86.4	80.8	76.3	84.7	75.8	79.8	85.3	87.0	89.7	84.6	79.8			
85	86.0	82.1	84.7	92.6	87.7	88.0	81.7	77.6	86.2	77.5	81.2	86.6	87.2	90.4	84.1	80.1			
90	85.3	81.1	83.4	92.2	87.2	88.5	81.9	77.9	86.2	78.3	81.6	87.1	86.5	89.9	82.8	79.5			
95	84.1	79.6	81.6	90.7	86.0	88.3	81.3	77.8	85.5	78.5	81.2	86.7	85.2	88.8	81.1	78.2			
100	82.3	77.8	79.4	88.5	84.4	87.3	80.4	77.3	84.2	78.2	80.6	85.5	83.7	87.2	79.1	76.4			
105	80.0	75.4	76.7	85.6	82.3	85.6	79.3	76.3	82.8	77.2	79.2	83.7	81.5	85.1	76.5	74.2			
110	77.0	72.6	73.9	82.2	79.8	82.9	77.3	74.3	80.6	75.7	77.1	81.3	78.9	82.2	73.6	71.2			
115	73.1	69.5	70.6	78.2	76.8	79.5	74.4	71.7	77.9	73.4	74.2	77.7	75.7	78.2	70.2	67.5			
120	68.5	66.3	67.0	73.3	73.1	75.3	70.4	68.5	74.2	70.4	70.6	73.2	71.8	73.7	66.5	63.4			
125	63.2	62.2	63.2	67.9	68.7	70.8	66.0	64.9	70.0	66.7	66.4	68.2	67.3	68.6	62.1	58.9			
130	57.3	56.9	59.0	62.0	63.8	65.6	61.1	60.8	64.9	62.1	61.5	62.0	62.2	63.2	56.1	54.5			
135	50.9	50.9	52.4	55.6	58.2	59.2	55.2	56.0	59.2	56.5	55.7	55.7	56.5	57.1	50.2	49.6			
140	44.2	41.7	44.0	48.8	51.0	50.5	48.6	50.5	53.2	50.0	47.2	48.7	50.6	47.5	42.2	42.7			
145	33.4	31.6	35.0	39.8	41.8	40.8	39.8	43.2	45.8	41.9	37.9	40.1	41.4	37.6	34.7	34.5			
150	22.2	23.8	24.5	29.6	30.9	31.3	31.7	35.1	35.2	32.7	29.1	31.4	30.6	26.4	28.9	25.1			
155	11.8	16.8	14.7	18.1	19.1	24.0	24.3	25.4	24.5	22.6	20.5	22.0	20.2	16.3	15.9	13.8			
160	5.78	4.16	5.64	7.65	9.18	14.4	15.0	15.4	14.3	14.1	14.0	10.8	9.94	8.00	7.26	5.84			
165	0.72	0.61	0.69	0.92	1.43	2.30	3.13	3.13	2.93	2.96	3.69	0.86	0.89	0.93	1.07	0.79			
170	0.17	0.14	0.14	0.19	0.22	0.23	0.26	0.28	0.28	0.28	0.27	0.24	0.22	0.19	0.16	0.15			
175	0.12	0.09	0.08	0.08	0.08	0.08	0.08	0.08	0.08	0.08	0.08	0.08	0.08	0.08	0.08	0.08			
180	0.08	0.08	0.08	0.08	0.08	0.08	0.08	0.08	0.08	0.08	0.08	0.08	0.08	0.08	0.07	0.08			

C Range: 0 - 360DEG
 C Interval: 22.5DEG
 Test Speed: HIGH
 Temperature:24.6DEG
 Operators:KDD
 Test Date:2019-01-22

γ Range: 0 - 180DEG
 γ Interval: 0.5DEG
 Test System:EVERFINE GO-R5000_V2 SYSTEM V2.0.363T
 Humidity:37%
 Test Distance:1.509m [K=1.0000]
 Remarks: