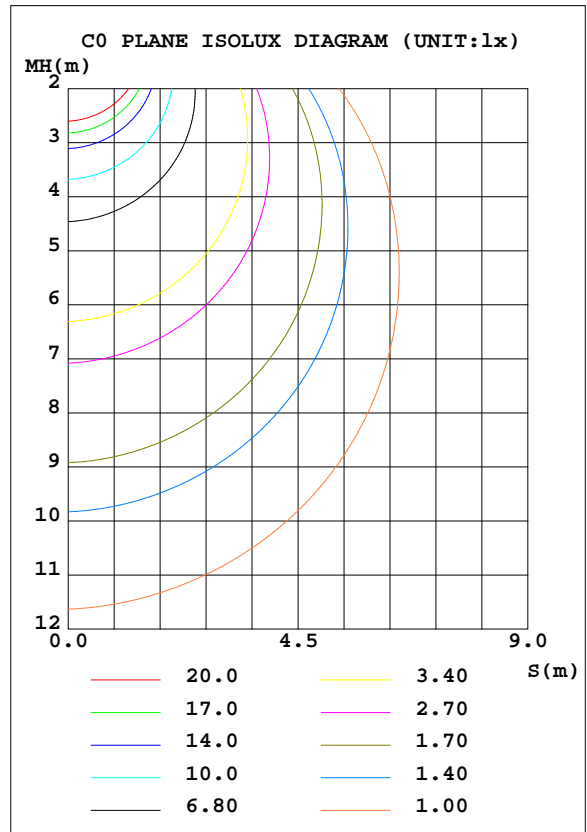
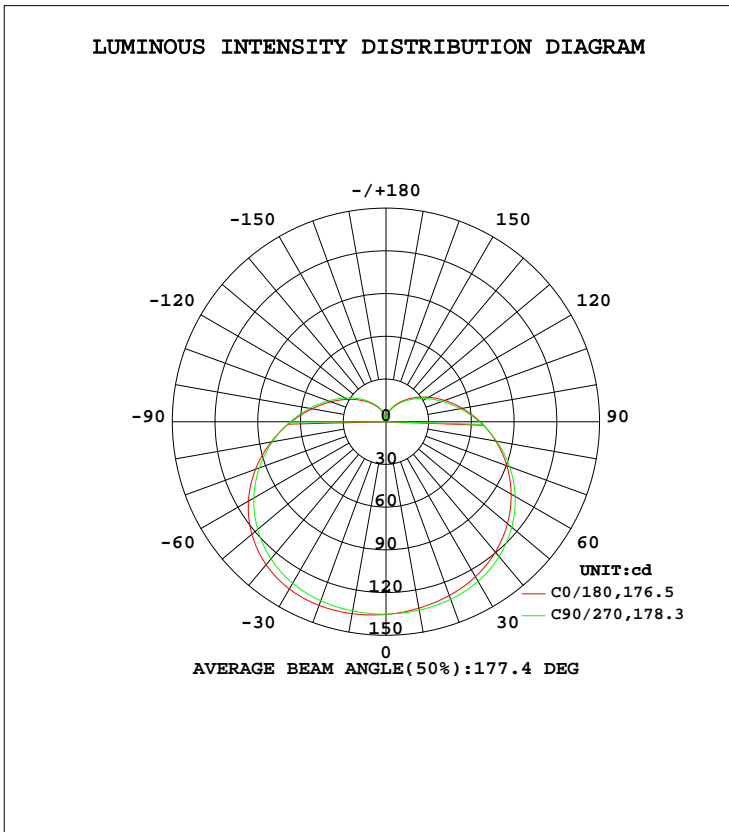


LUMINAIRE PHOTOMETRIC TEST REPORT

Test:U:230.0V I:0.0603A P:7.375W PF:0.5322 Freq:50.01Hz Lamp Flux:869.829x1 lm		
NAME:	TYPE:	WEIGHT:
SPEC.:A60_10aSA-A806ST-Q1-08_s_9W	DIM.:	SERIAL No.:A2005574A001
MFR.:	SUR.:	Shielding Angle:

DATA OF LAMP		PHOTOMETRIC DATA Eff: 117.94 lm/W			
MODEL		Imax(cd)	137.3	S/MH(C0/180)	1.51
NOMINAL POWER(W)		LOR(%)	100.0	S/MH(C90/270)	1.46
RATED VOLTAGE(V)		TOTAL FLUX(lm)	869.83	η UP, DN(C0-180)	12.2, 37.3
NOMINAL FLUX(lm)	869.829	CIE CLASS	SEMI-D.	η UP, DN(C180-360)	12.3, 38.2
LAMPS INSIDE	1	η up(%)	24.5	CIBSE SHR NOM	1.50
TEST VOLTAGE(V)		η down(%)	75.5	CIBSE SHR MAX	1.55



C Range: 0 - 360DEG
 C Interval: 22.5DEG
 Test Speed: HIGH
 Temperature:24.9DEG
 Operators:HHC
 Test Date:2020-04-15

γ Range: 0 - 180DEG
 γ Interval: 0.5DEG
 Test System:EVERFINE GO-R5000_V2 SYSTEM V2.0.363T
 Humidity:41%
 Test Distance:1.522m [K=1.0000]
 Remarks:

Checker:

Assessor: LiHua

ZONAL FLUX DIAGRAM

ZONAL FLUX DIAGRAM:

γ	C0	C45	C90	C135	C180	C225	C270	C315	γ	Φ zone	Φ total	%lum,lamp
10	133.0	133.3	134.3	135.8	136.8	136.4	134.9	133.5	0- 10	12.88	12.88	1.48,1.48
20	129.9	130.5	132.7	135.4	137.3	136.4	133.7	131.2	10- 20	38.01	50.89	5.85,5.85
30	125.6	126.3	129.3	133.1	135.7	134.5	131.0	127.7	20- 30	61.08	112.0	12.9,12.9
40	119.5	120.1	123.6	127.9	131.0	129.6	125.7	122.0	30- 40	80.25	192.2	22.1,22.1
50	111.3	111.8	115.3	119.7	122.9	121.5	117.7	114.1	40- 50	93.65	285.9	32.9,32.9
60	101.5	101.7	104.7	108.5	111.6	110.3	107.2	104.1	50- 60	100.1	386.0	44.4,44.4
70	90.30	90.22	92.34	94.97	97.45	96.67	94.70	92.57	60- 70	99.22	485.2	55.8,55.8
80	78.30	77.93	78.96	80.17	81.87	81.68	81.02	80.01	70- 80	91.85	577.0	66.3,66.3
90	66.15	65.62	65.56	65.50	66.56	66.86	67.30	67.33	80- 90	79.78	656.8	75.5,75.5
100	54.51	53.88	53.06	52.21	52.79	53.35	54.40	55.12	90-100	65.38	722.2	83,83
110	43.87	43.24	42.06	40.87	41.14	41.80	43.04	44.09	100-110	50.78	772.9	88.9,88.9
120	34.46	33.91	32.68	31.63	31.53	32.19	33.40	34.47	110-120	37.42	810.4	93.2,93.2
130	26.42	25.92	24.80	23.72	23.69	24.28	25.33	26.27	120-130	26.03	836.4	96.2,96.2
140	19.55	19.15	18.24	17.35	17.29	17.81	18.62	19.37	130-140	16.83	853.2	98.1,98.1
150	13.87	13.56	12.86	12.20	12.11	12.50	13.12	13.66	140-150	9.875	863.1	99.2,99.2
160	9.060	8.839	8.364	7.836	7.552	7.683	8.201	8.932	150-160	4.987	868.1	99.8,99.8
170	3.691	3.504	2.998	2.850	2.520	2.292	0.9615	1.826	160-170	1.667	869.7	100,100
180	0.1991	0.1993	0.2037	0.2081	0.1980	0.1984	0.2019	0.2055	170-180	0.0819	869.8	100,100
DEG	LUMINOUS INTENSITY:cd									UNIT:lm		

Conical surface Flux(90deg): 237.79 lm

%lum = 27.3%

%lamp = 27.3%

Conical surface Flux(120deg): 385.95 lm

%lum = 44.4%

%lamp = 44.4%

C Range: 0 - 360DEG
 C Interval: 22.5DEG
 Test Speed: HIGH
 Temperature:24.9DEG
 Operators:HHC
 Test Date:2020-04-15

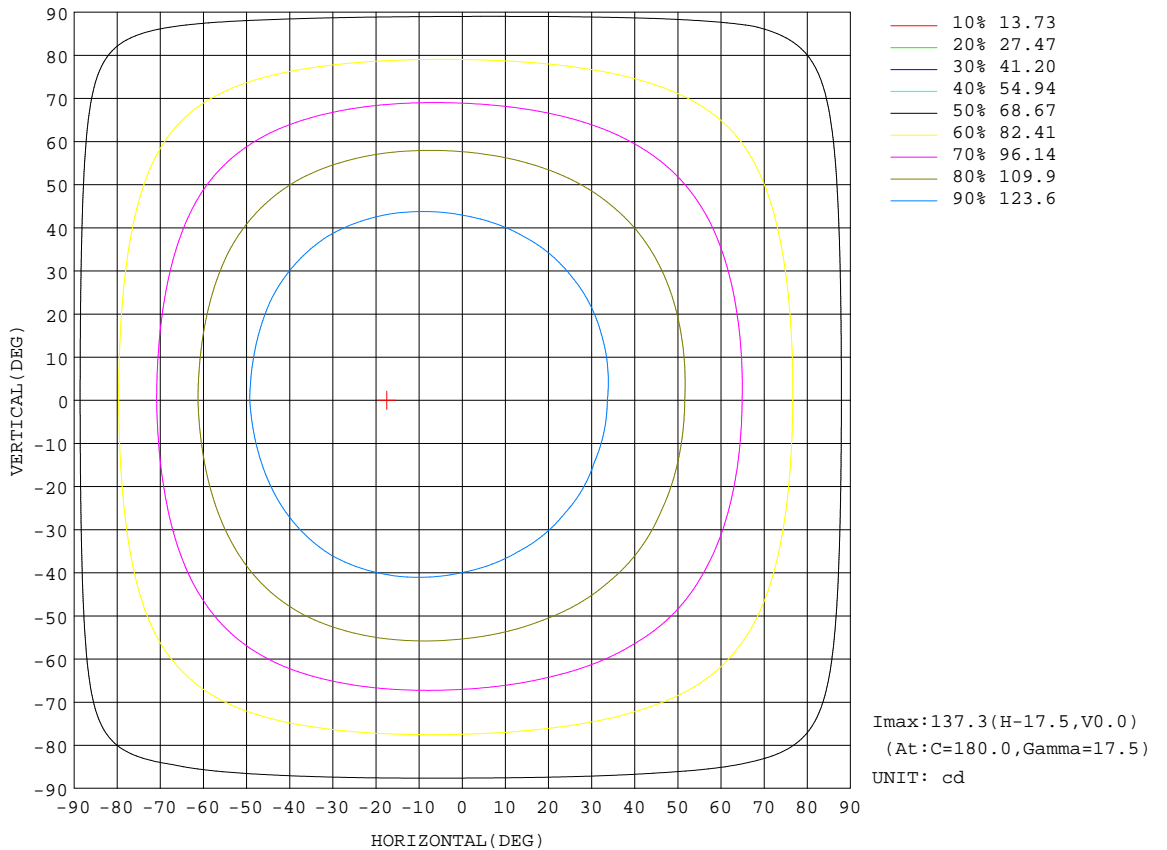
γ Range: 0 - 180DEG
 γ Interval: 0.5DEG
 Test System:EVERFINE GO-R5000_V2 SYSTEM V2.0.363T
 Humidity:41%
 Test Distance:1.522m [K=1.0000]
 Remarks:

Checker:

Assessor: LiHua

ISOCANDELA DIAGRAM

Test:U:230.0V I:0.0603A P:7.375W PF:0.5322 Freq:50.01Hz Lamp Flux:869.829x1 lm		
NAME:	TYPE:	WEIGHT:
SPEC.:A60_10aSA-A806ST-Q1-08_s_9W	DIM.:	SERIAL No.:A2005574A001
MFR.:	SUR.:	Shielding Angle:



C Range: 0 - 360DEG
 C Interval: 22.5DEG
 Test Speed: HIGH
 Temperature:24.9DEG
 Operators:HHC
 Test Date:2020-04-15

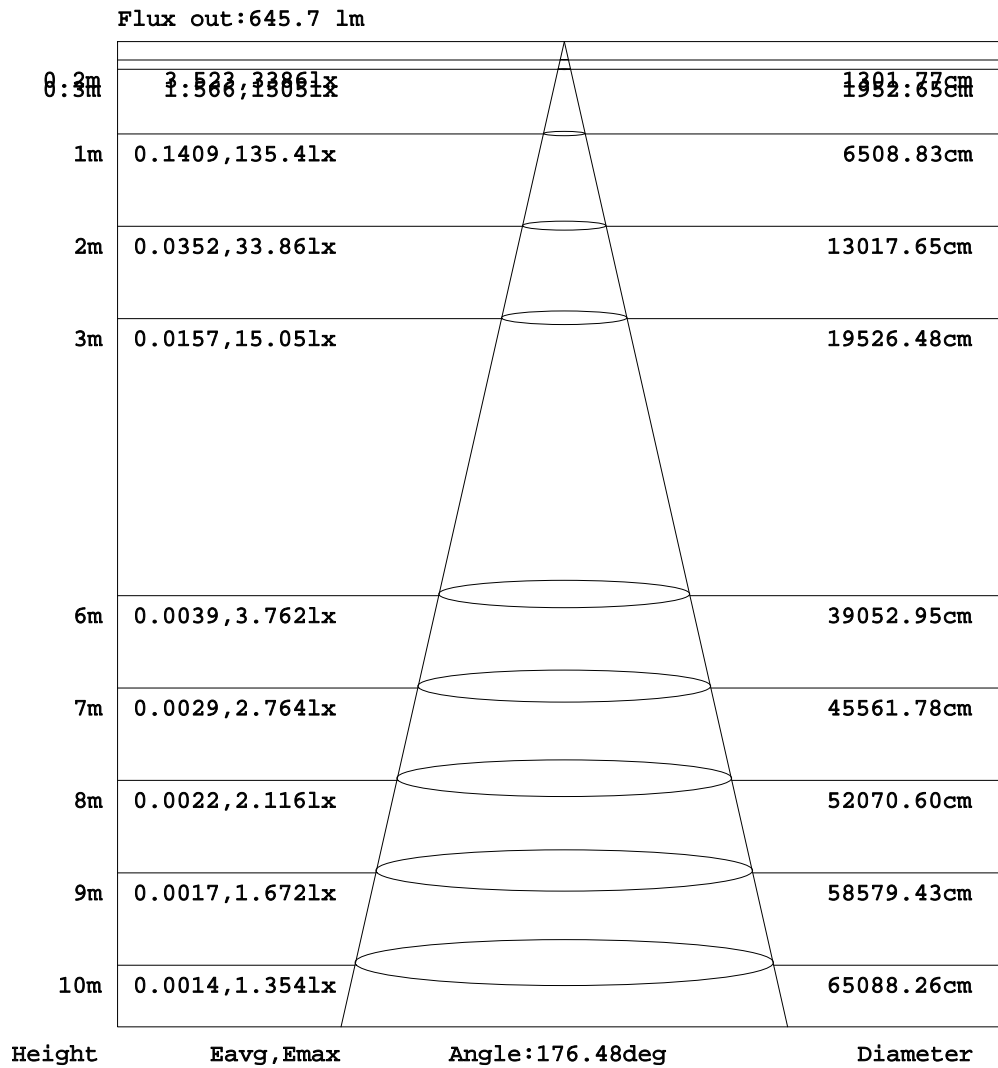
γ Range: 0 - 180DEG
 γ Interval: 0.5DEG
 Test System:EVERFINE GO-R5000_V2 SYSTEM V2.0.363T
 Humidity:41%
 Test Distance:1.522m [K=1.0000]
 Remarks:

Checker:

Assessor: LiHua

AAI Figure

Test:U:230.0V I:0.0603A P:7.375W PF:0.5322 Freq:50.01Hz Lamp Flux:869.829x1 lm		
NAME:	TYPE:	WEIGHT:
SPEC.:A60_10aSA-A806ST-Q1-08_s_9W	DIM.:	SERIAL No.:A2005574A001
MFR.:	SUR.:	Shielding Angle:



Note:The Curves indicate the illuminated area and the average illumination when the luminaire is at different distance.

C Range: 0 - 360DEG
 C Interval: 22.5DEG
 Test Speed: HIGH
 Temperature:24.9DEG
 Operators:HHC
 Test Date:2020-04-15

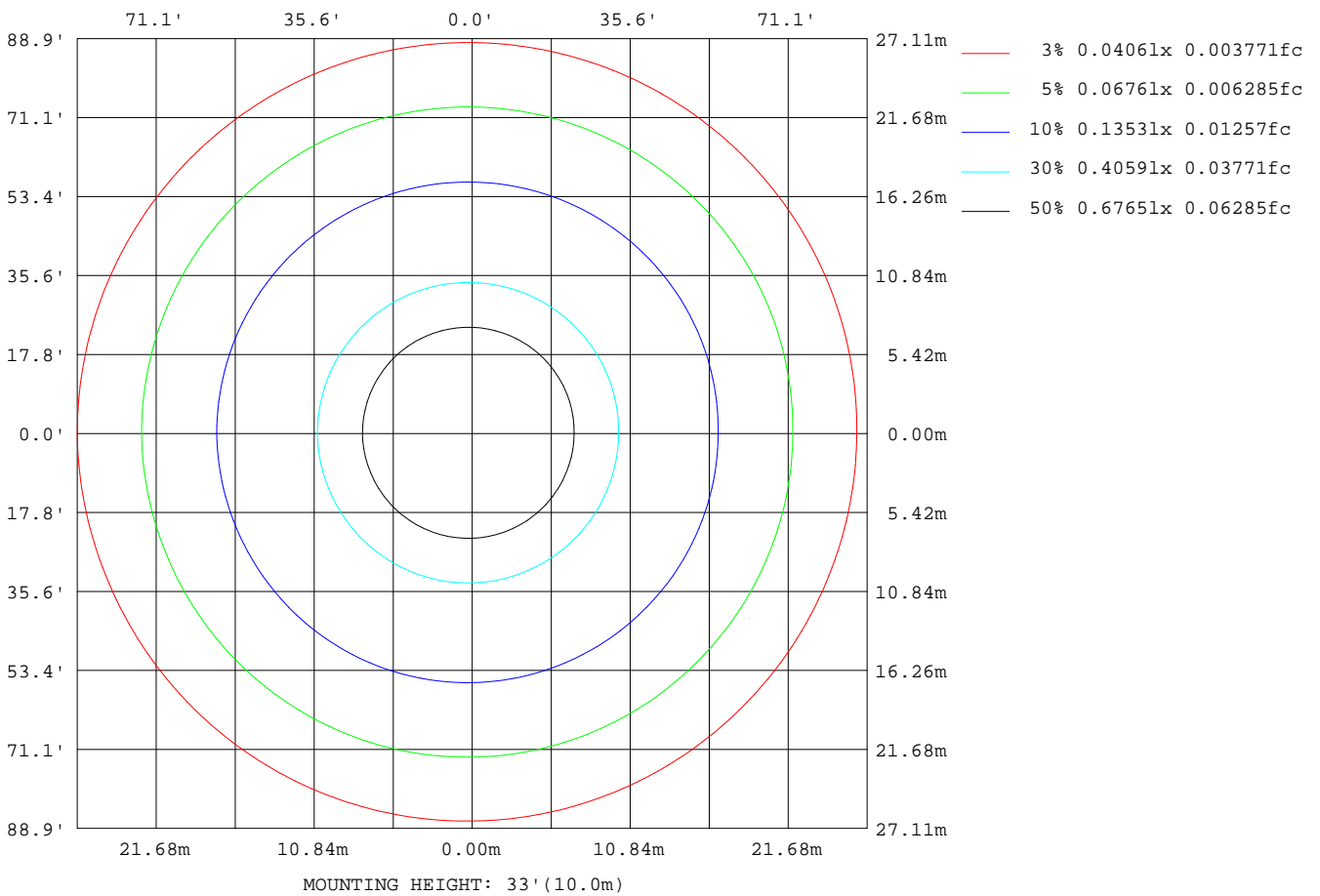
γ Range: 0 - 180DEG
 γ Interval: 0.5DEG
 Test System:EVERFINE GO-R5000_V2 SYSTEM V2.0.363T
 Humidity:41%
 Test Distance:1.522m [K=1.0000]
 Remarks:

Checker:

Assessor: LiHua

ISOLUX DIAGRAM

Test:U:230.0V I:0.0603A P:7.375W PF:0.5322 Freq:50.01Hz Lamp Flux:869.829x1 lm		
NAME:	TYPE:	WEIGHT:
SPEC.:A60_10aSA-A806ST-Q1-08_s_9W	DIM.:	SERIAL No.:A2005574A001
MFR.:	SUR.:	Shielding Angle:



C Range: 0 - 360DEG
 C Interval: 22.5DEG
 Test Speed: HIGH
 Temperature: 24.9DEG
 Operators: HHC
 Test Date: 2020-04-15

γ Range: 0 - 180DEG
 γ Interval: 0.5DEG
 Test System: EVERFINE GO-R5000_V2 SYSTEM V2.0.363T
 Humidity: 41%
 Test Distance: 1.522m [K=1.0000]
 Remarks:

Checker:

Assessor: LiHua

LED Avg.L Report

Test:U:230.0V I:0.0603A P:7.375W PF:0.5322 Freq:50.01Hz Lamp Flux:869.829x1 lm		
NAME:	TYPE:	WEIGHT:
SPEC.:A60_10aSA-A806ST-Q1-08_S_9W	DIM.:	SERIAL No.:A2005574A001
MFR.:	SUR.:	Shielding Angle:

AvgL	cd/m2
L_0~180(65)av	2375591705
L_0~180(75)av	3363291480
L_0~180(85)av	8394507913
L_90~270(65)av	2364273304
L_90~270(75)av	3355013548
L_90~270(85)av	8394243112
L_45(65)av	2367819483
L_45(75)av	3355759593
L_45(85)av	8384464411

Standard: GB/T 29293-2012

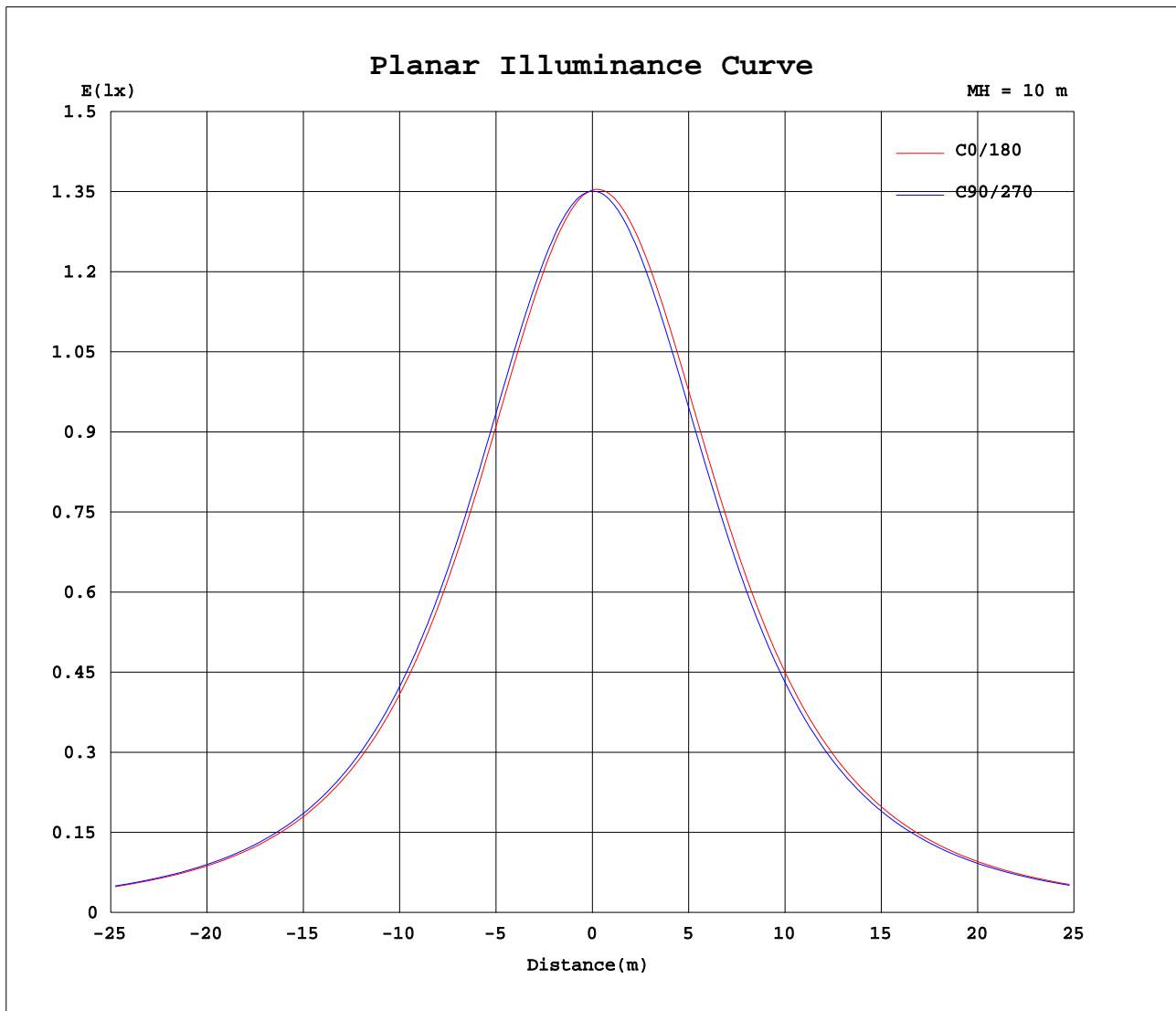
C Range: 0 - 360DEG
C Interval: 22.5DEG
Test Speed: HIGH
Temperature:24.9DEG
Operators:HHC
Test Date:2020-04-15

γ Range: 0 - 180DEG
 γ Interval: 0.5DEG
Test System:EVERFINE GO-R5000_V2 SYSTEM V2.0.363T
Humidity:41%
Test Distance:1.522m [K=1.0000]
Remarks:

Checker:

Assessor: LiHua

Planar Illuminance Curve



C Range: 0 - 360DEG
C Interval: 22.5DEG
Test Speed: HIGH
Temperature: 24.9DEG
Operators: HHC
Test Date: 2020-04-15

γ Range: 0 - 180DEG
 γ Interval: 0.5DEG
Test System: EVERFINE GO-R5000_V2 SYSTEM V2.0.363T
Humidity: 41%
Test Distance: 1.522m [K=1.0000]
Remarks:

Checker:

Assessor: LiHua

LUMINOUS DISTRIBUTION INTENSITY DATA

Test:U:230.0V I:0.0603A P:7.375W PF:0.5322 Freq:50.01Hz Lamp Flux:869.829x1 lm		
NAME:	TYPE:	WEIGHT:
SPEC.:A60_10aSA-A806ST-Q1-08_s_9W	DIM.:	SERIAL No.:A2005574A001
MFR.:	SUR.:	Shielding Angle:

Table--1

UNIT: cd

C(DEG) γ (DEG)	0	22.5	45	67.5	90	112.5	135	157.5	180	202.5	225	247.5	270	292.5	315	337.5			
0	135	135	135	135	135	135	135	135	135	135	135	135	135	135	135	135			
5	134	134	134	135	135	135	136	136	136	136	136	136	135	135	134	134			
10	133	133	133	134	134	135	136	136	137	137	136	136	135	134	134	133			
15	132	131	132	133	134	135	136	137	137	137	137	136	134	133	132	132			
20	130	130	130	131	133	134	135	136	137	137	136	135	134	132	131	130			
25	128	128	129	130	131	133	135	136	137	137	136	134	133	131	130	129			
30	126	126	126	128	129	131	133	134	136	135	134	133	131	129	128	126			
35	123	123	123	125	127	129	131	132	134	133	132	131	129	127	125	124			
40	119	119	120	122	124	126	128	129	131	131	130	128	126	124	122	121			
45	116	115	116	118	120	122	124	126	127	127	126	124	122	120	118	117			
50	111	111	112	113	115	118	120	121	123	123	121	120	118	116	114	113			
55	107	106	107	108	110	112	114	116	118	117	116	115	113	111	109	108			
60	101	101	102	103	105	107	108	110	112	111	110	109	107	106	104	103			
65	96.0	95.7	96.1	97.2	98.7	100	102	103	105	105	104	103	101	99.8	98.5	97.4			
70	90.3	89.9	90.2	91.1	92.3	93.7	95.0	96.0	97.4	97.3	96.7	95.8	94.7	93.7	92.6	91.6			
75	84.4	84.0	84.1	84.8	85.7	86.8	87.6	88.4	89.7	89.7	89.3	88.7	87.9	87.2	86.4	85.6			
80	78.3	77.9	77.9	78.4	79.0	79.6	80.2	80.6	81.9	81.9	81.7	81.4	81.0	80.6	80.0	79.5			
85	72.2	71.8	71.7	72.0	72.2	72.5	72.7	73.0	74.1	74.2	74.2	74.2	74.1	74.0	73.7	73.3			
90	66.1	65.8	65.6	65.6	65.6	65.6	65.5	65.6	66.6	66.7	66.9	67.1	67.3	67.4	67.3	67.1			
95	60.2	59.9	59.7	59.5	59.2	58.9	58.7	58.5	59.4	59.6	59.9	60.3	60.7	61.0	61.1	61.1			
100	54.5	54.2	53.9	53.6	53.1	52.6	52.2	52.0	52.8	53.0	53.4	53.9	54.4	54.9	55.1	55.2			
105	49.0	48.8	48.4	48.0	47.3	46.8	46.3	46.0	46.7	46.9	47.3	47.9	48.5	49.1	49.4	49.6			
110	43.9	43.6	43.2	42.7	42.1	41.4	40.9	40.6	41.1	41.3	41.8	42.4	43.0	43.6	44.1	44.3			
115	39.0	38.8	38.4	37.9	37.2	36.5	35.9	35.6	36.1	36.3	36.8	37.4	38.0	38.6	39.1	39.4			
120	34.5	34.3	33.9	33.4	32.7	32.0	31.6	31.2	31.5	31.8	32.2	32.8	33.4	34.0	34.5	34.8			
125	30.3	30.2	29.8	29.3	28.6	28.0	27.4	27.1	27.4	27.6	28.0	28.6	29.2	29.7	30.2	30.5			
130	26.4	26.3	25.9	25.4	24.8	24.2	23.7	23.5	23.7	23.9	24.3	24.8	25.3	25.8	26.3	26.6			
135	22.8	22.7	22.4	21.9	21.4	20.8	20.4	20.1	20.3	20.5	20.9	21.3	21.8	22.3	22.7	22.9			
140	19.5	19.4	19.1	18.8	18.2	17.7	17.3	17.1	17.3	17.5	17.8	18.2	18.6	19.0	19.4	19.6			
145	16.6	16.5	16.2	15.9	15.4	15.0	14.6	14.4	14.6	14.7	15.0	15.4	15.7	16.1	16.4	16.6			
150	13.9	13.8	13.6	13.3	12.9	12.5	12.2	12.0	12.1	12.2	12.5	12.8	13.1	13.4	13.7	13.9			
155	11.4	11.3	11.1	10.9	10.5	10.2	9.96	9.85	9.84	9.86	10.2	10.4	10.7	11.0	11.2	11.4			
160	9.06	8.94	8.84	8.63	8.36	8.10	7.84	7.79	7.55	7.43	7.68	8.22	8.20	8.56	8.93	9.07			
165	6.69	6.48	6.47	6.30	6.11	5.90	5.64	5.64	5.19	5.16	3.55	3.76	5.25	5.55	6.09	6.31			
170	3.69	3.63	3.50	3.46	3.00	3.08	2.85	2.72	2.52	2.50	2.29	2.02	0.96	1.91	1.83	1.51			
175	0.21	0.21	0.21	0.21	0.21	0.21	0.21	0.21	0.18	0.18	0.18	0.18	0.18	0.25	0.24	0.30			
180	0.20	0.20	0.20	0.20	0.20	0.21	0.21	0.21	0.21	0.20	0.20	0.20	0.20	0.20	0.21	0.21			

C Range: 0 - 360DEG
 C Interval: 22.5DEG
 Test Speed: HIGH
 Temperature:24.9DEG
 Operators:HHC
 Test Date:2020-04-15

γ Range: 0 - 180DEG
 γ Interval: 0.5DEG
 Test System:EVERFINE GO-R5000_V2 SYSTEM V2.0.363T
 Humidity:41%
 Test Distance:1.522m [K=1.0000]
 Remarks:

Checker:

Assessor: LiHua