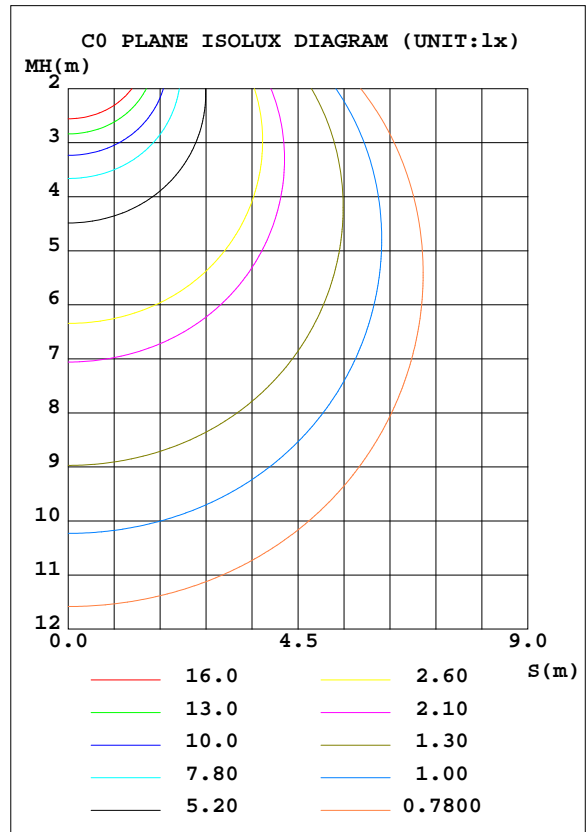
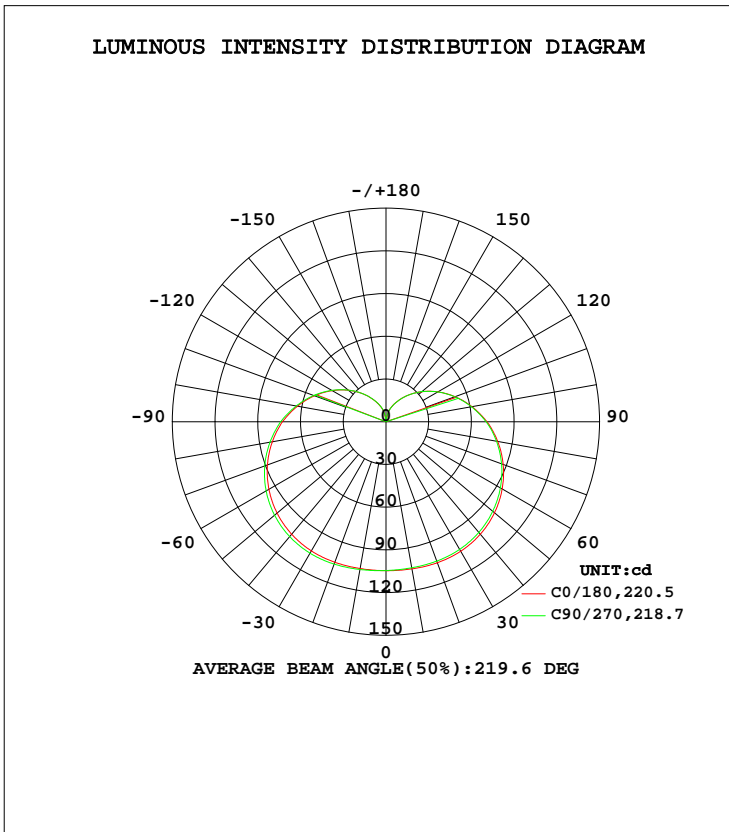


LUMINAIRE PHOTOMETRIC TEST REPORT

Test:U:230.0V I:0.0554A P:7.160W PF:0.5619 Freq:50.01Hz Lamp Flux:844.864x1 lm		
NAME:	TYPE:	WEIGHT:
SPEC.:10aSA-P806ST-A1	DIM.:	SERIAL No.:A2001543A001
MFR.:	SUR.:	Shielding Angle:

DATA OF LAMP		PHOTOMETRIC DATA Eff: 117.99 lm/W			
MODEL		Imax(cd)	106.7	S/MH(C0/180)	1.52
NOMINAL POWER(W)		LOR(%)	100.0	S/MH(C90/270)	1.55
RATED VOLTAGE(V)		TOTAL FLUX(lm)	844.86	$\eta$ UP, DN(C0-180)	15.2,34.1
NOMINAL FLUX(lm)	844.864	CIE CLASS	SEMI-D.	$\eta$ UP, DN(C180-360)	15.8,35.0
LAMPS INSIDE	1	$\eta$ up(%)	30.9	CIBSE SHR NOM	1.75
TEST VOLTAGE(V)		$\eta$ down(%)	69.1	CIBSE SHR MAX	1.75



C Range: 0 - 360DEG  
 C Interval: 22.5DEG  
 Test Speed: HIGH  
 Temperature:24.2DEG  
 Operators:LSC  
 Test Date:2020-02-24

$\gamma$  Range: 0 - 180DEG  
 $\gamma$  Interval: 0.5DEG  
 Test System:EVERFINE GO-R5000\_V2 SYSTEM V2.0.363T  
 Humidity:52.0%  
 Test Distance:1.510m [K=1.0000]  
 Remarks:

Checker:

Assessor: LiHua

## ZONAL FLUX DIAGRAM

## ZONAL FLUX DIAGRAM:

$\gamma$	C0	C45	C90	C135	C180	C225	C270	C315	$\gamma$	$\Phi$ zone	$\Phi$ total	%lum,lamp
10	104.9	104.5	104.1	104.2	104.7	105.1	105.3	105.3	0- 10	9.990	9.990	1.18,1.18
20	105.4	104.6	104.1	104.2	105.0	105.9	106.4	106.2	10- 20	29.78	39.77	4.71,4.71
30	105.0	104.1	103.5	103.6	104.8	105.9	106.6	106.3	20- 30	48.69	88.46	10.5,10.5
40	103.1	102.0	101.4	101.7	103.1	104.5	105.3	104.7	30- 40	65.45	153.9	18.2,18.2
50	99.46	98.32	97.87	98.18	99.82	101.4	102.1	101.4	40- 50	78.69	232.6	27.5,27.5
60	94.23	93.15	92.79	93.19	94.94	96.45	97.19	96.35	50- 60	87.36	320.0	37.9,37.9
70	87.56	86.58	86.35	86.81	88.60	90.01	90.64	89.68	60- 70	90.92	410.9	48.6,48.6
80	79.66	78.86	78.79	79.29	81.06	82.28	82.70	81.69	70- 80	89.35	500.2	59.2,59.2
90	70.97	70.31	70.37	70.87	72.71	73.70	73.98	72.89	80- 90	83.24	583.5	69.1,69.1
100	61.32	60.81	60.97	61.58	63.18	63.97	64.05	63.08	90-100	73.30	656.8	77.7,77.7
110	51.62	51.21	51.43	52.04	53.47	54.08	54.04	53.16	100-110	60.87	717.6	84.9,84.9
120	42.10	41.76	41.97	42.57	43.79	44.24	44.13	43.34	110-120	47.50	765.1	90.6,90.6
130	32.75	32.68	33.42	33.42	34.48	34.81	34.65	33.97	120-130	34.45	799.6	94.6,94.6
140	24.53	24.26	24.45	24.92	25.84	26.10	25.95	25.37	130-140	22.85	822.4	97.3,97.3
150	17.09	16.81	16.97	17.34	18.14	18.37	18.29	17.09	140-150	13.45	835.9	98.9,98.9
160	10.87	10.58	10.70	10.97	11.65	11.85	11.89	10.10	150-160	6.575	842.5	99.7,99.7
170	0.2569	3.518	3.526	3.808	4.583	4.601	4.756	3.752	160-170	2.313	844.8	100,100
180	0.1562	0.1615	0.1636	0.1714	0.1573	0.1593	0.1615	0.1652	170-180	0.0902	844.9	100,100
DEG	LUMINOUS INTENSITY:cd									UNIT:lm		

Conical surface Flux(90deg): 191.86 lm

%lum = 22.7%

%lamp = 22.7%

Conical surface Flux(120deg): 319.96 lm

%lum = 37.9%

%lamp = 37.9%

C Range: 0 - 360DEG  
C Interval: 22.5DEG  
Test Speed: HIGH  
Temperature:24.2DEG  
Operators:LSC  
Test Date:2020-02-24

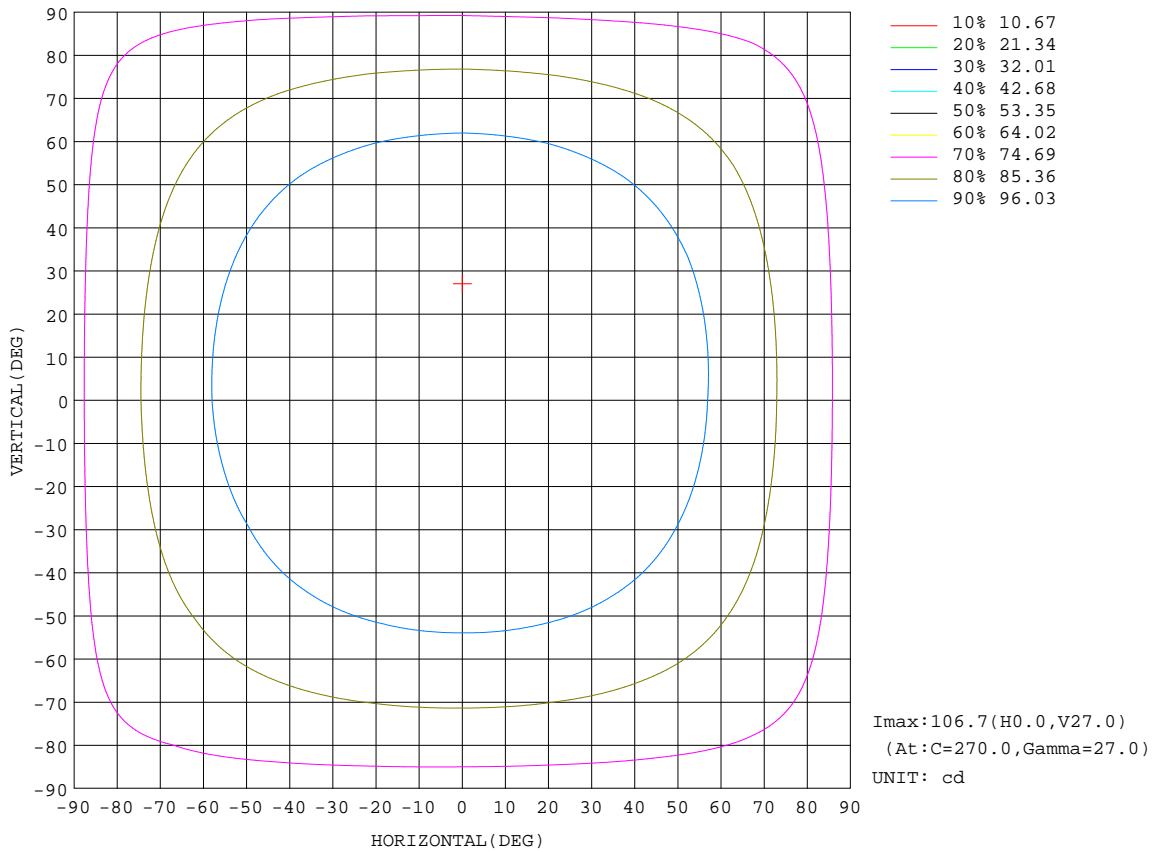
$\gamma$  Range: 0 - 180DEG  
 $\gamma$  Interval: 0.5DEG  
Test System:EVERFINE GO-R5000\_V2 SYSTEM V2.0.363T  
Humidity:52.0%  
Test Distance:1.510m [K=1.0000]  
Remarks:

Checker:

Assessor: LiHua

ISOCANDELA DIAGRAM

Test:U:230.0V I:0.0554A P:7.160W PF:0.5619 Freq:50.01Hz Lamp Flux:844.864x1 lm		
NAME:	TYPE:	WEIGHT:
SPEC.:10aSA-P806ST-A1	DIM.:	SERIAL No.:A2001543A001
MFR.:	SUR.:	Shielding Angle:



C Range: 0 - 360DEG  
 C Interval: 22.5DEG  
 Test Speed: HIGH  
 Temperature:24.2DEG  
 Operators:LSC  
 Test Date:2020-02-24

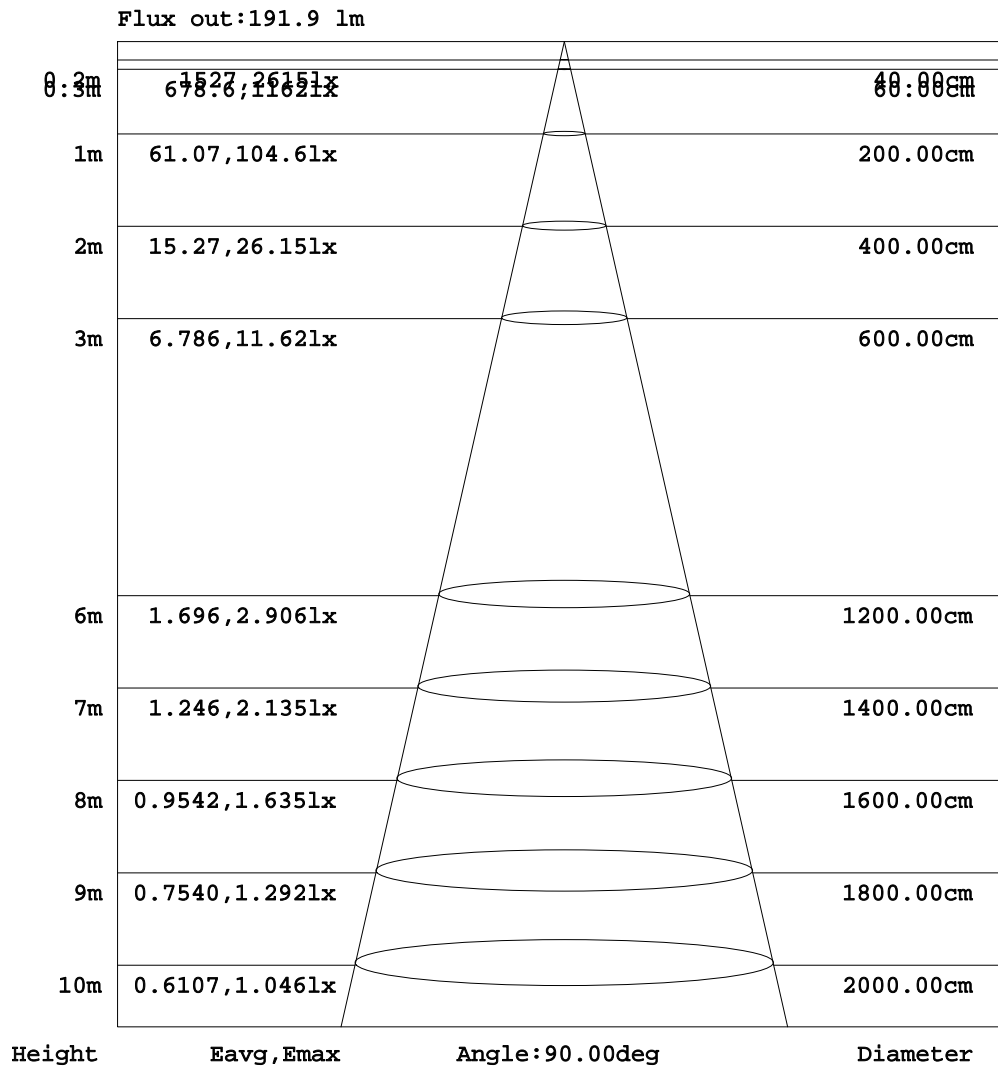
γ Range: 0 - 180DEG  
 γ Interval: 0.5DEG  
 Test System:EVERFINE GO-R5000\_V2 SYSTEM V2.0.363T  
 Humidity:52.0%  
 Test Distance:1.510m [K=1.0000]  
 Remarks:

Checker:

Assessor: LiHua

AAI Figure

Test:U:230.0V I:0.0554A P:7.160W PF:0.5619 Freq:50.01Hz Lamp Flux:844.864x1 lm		
NAME:	TYPE:	WEIGHT:
SPEC.:10aSA-P806ST-A1	DIM.:	SERIAL No.:A2001543A001
MFR.:	SUR.:	Shielding Angle:



Note:The Curves indicate the illuminated area and the average illumination when the luminaire is at different distance.

C Range: 0 - 360DEG  
 C Interval: 22.5DEG  
 Test Speed: HIGH  
 Temperature:24.2DEG  
 Operators:LSC  
 Test Date:2020-02-24

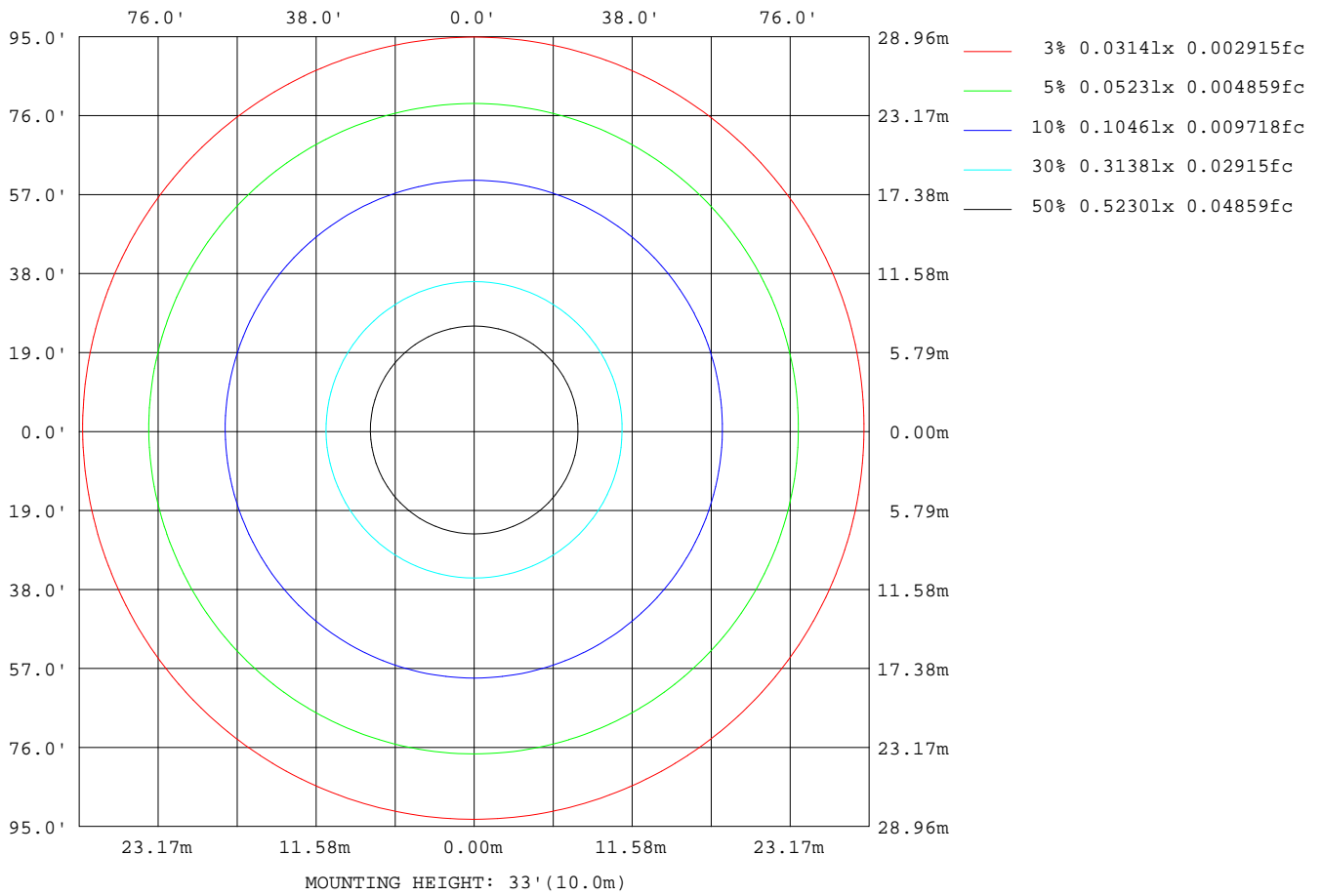
γ Range: 0 - 180DEG  
 γ Interval: 0.5DEG  
 Test System:EVERFINE GO-R5000\_V2 SYSTEM V2.0.363T  
 Humidity:52.0%  
 Test Distance:1.510m [K=1.0000]  
 Remarks:

Checker:

Assessor: LiHua

ISOLUX DIAGRAM

Test:U:230.0V I:0.0554A P:7.160W PF:0.5619 Freq:50.01Hz Lamp Flux:844.864x1 lm		
NAME:	TYPE:	WEIGHT:
SPEC.:10aSA-P806ST-A1	DIM.:	SERIAL No.:A2001543A001
MFR.:	SUR.:	Shielding Angle:



C Range: 0 - 360DEG  
 C Interval: 22.5DEG  
 Test Speed: HIGH  
 Temperature:24.2DEG  
 Operators:LSC  
 Test Date:2020-02-24

γ Range: 0 - 180DEG  
 γ Interval: 0.5DEG  
 Test System:EVERFINE GO-R5000\_V2 SYSTEM V2.0.363T  
 Humidity:52.0%  
 Test Distance:1.510m [K=1.0000]  
 Remarks:

Checker:

Assessor: LiHua

## LED Avg.L Report

Test:U:230.0V I:0.0554A P:7.160W PF:0.5619 Freq:50.01Hz Lamp Flux:844.864x1 lm		
NAME:	TYPE:	WEIGHT:
SPEC.:10aSA-P806ST-A1	DIM.:	SERIAL No.:A2001543A001
MFR.:	SUR.:	Shielding Angle:

AvgL	cd/m2
L_0~180(65)av	2165031507
L_0~180(75)av	3259564853
L_0~180(85)av	8737574709
L_90~270(65)av	2174820666
L_90~270(75)av	3274772849
L_90~270(85)av	8781347822
L_45(65)av	2169820862
L_45(75)av	3265892356
L_45(85)av	8754846727

Standard: GB/T 29293-2012

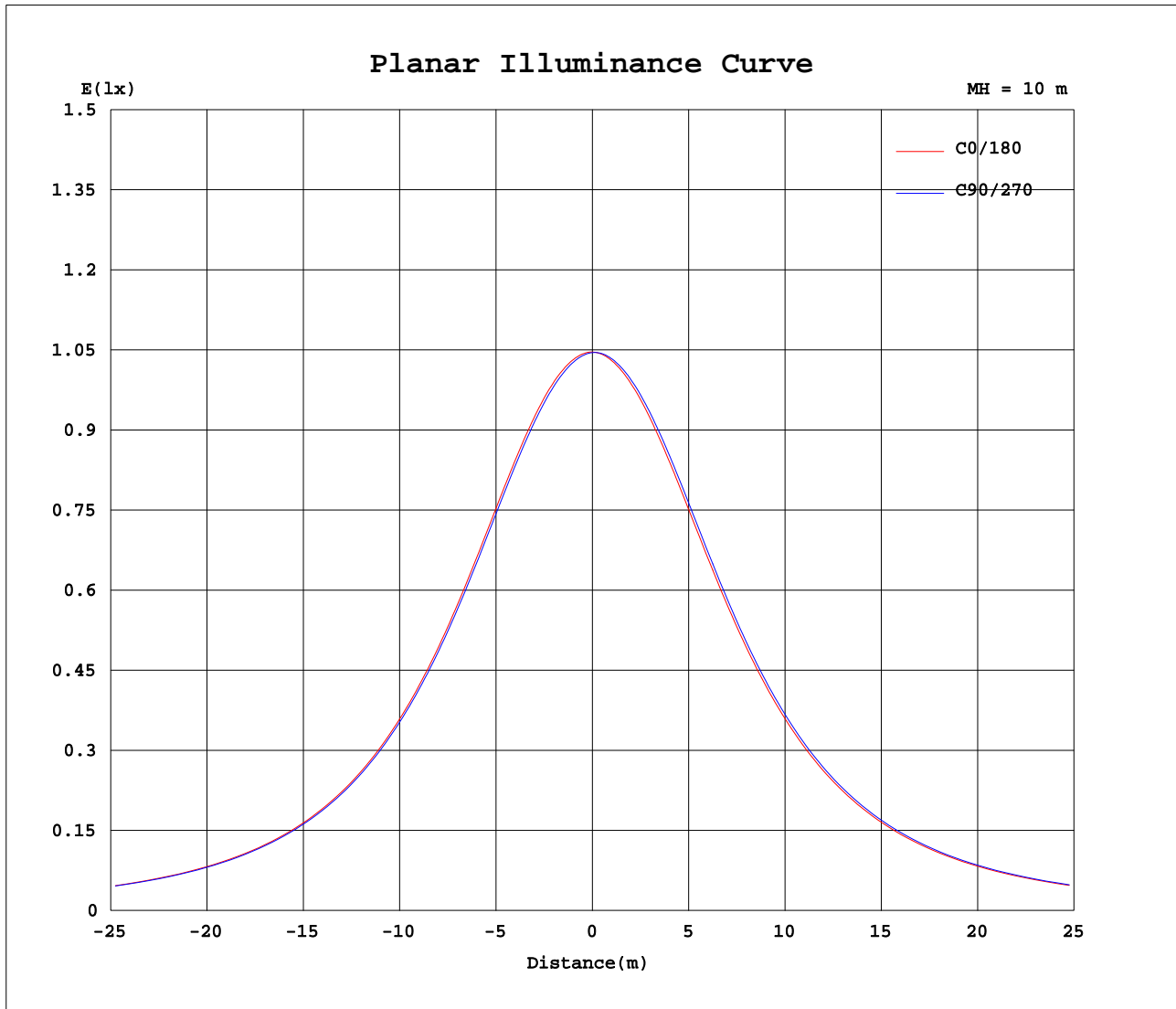
C Range: 0 - 360DEG  
C Interval: 22.5DEG  
Test Speed: HIGH  
Temperature:24.2DEG  
Operators:LSC  
Test Date:2020-02-24

$\gamma$  Range: 0 - 180DEG  
 $\gamma$  Interval: 0.5DEG  
Test System:EVERFINE GO-R5000\_V2 SYSTEM V2.0.363T  
Humidity:52.0%  
Test Distance:1.510m [K=1.0000]  
Remarks:

Checker:

Assessor: LiHua

Planar Illuminance Curve



C Range: 0 - 360DEG  
 C Interval: 22.5DEG  
 Test Speed: HIGH  
 Temperature: 24.2DEG  
 Operators: LSC  
 Test Date: 2020-02-24

$\gamma$  Range: 0 - 180DEG  
 $\gamma$  Interval: 0.5DEG  
 Test System: EVERFINE GO-R5000\_V2 SYSTEM V2.0.363T  
 Humidity: 52.0%  
 Test Distance: 1.510m [K=1.0000]  
 Remarks:

Checker:

Assessor: LiHua

LUMINOUS DISTRIBUTION INTENSITY DATA

Test:U:230.0V I:0.0554A P:7.160W PF:0.5619 Freq:50.01Hz Lamp Flux:844.864xl lm		
NAME:	TYPE:	WEIGHT:
SPEC.:10aSA-P806ST-A1	DIM.:	SERIAL No.:A2001543A001
MFR.:	SUR.:	Shielding Angle:

Table--1

UNIT: cd

C(DEG) γ (DEG)	0	22.5	45	67.5	90	112.5	135	157.5	180	202.5	225	247.5	270	292.5	315	337.5			
0	105	105	105	105	105	104	105	105	105	105	105	105	105	104	105	105			
5	105	105	104	104	104	104	104	104	105	105	105	105	105	105	105	105			
10	105	105	104	104	104	104	104	104	105	105	105	105	105	105	105	105			
15	105	105	105	104	104	104	104	104	105	105	106	106	106	106	106	106			
20	105	105	105	104	104	104	104	104	105	105	106	106	106	106	106	106			
25	105	105	105	104	104	104	104	104	105	106	106	106	107	107	106	106			
30	105	104	104	104	103	103	104	104	105	105	106	106	107	107	106	106			
35	104	104	103	103	103	103	103	103	104	105	105	106	106	106	106	105			
40	103	102	102	102	101	101	102	102	103	104	105	105	105	105	105	104			
45	101	101	100	100	99.9	99.9	100	101	102	102	103	104	104	104	103	103			
50	99.5	98.8	98.3	98.0	97.9	97.9	98.2	98.6	99.8	101	101	102	102	102	101	101			
55	97.0	96.4	95.9	95.6	95.5	95.6	95.9	96.3	97.6	98.3	99.1	99.7	99.9	99.7	99.1	98.3			
60	94.2	93.6	93.2	92.9	92.8	92.9	93.2	93.6	94.9	95.7	96.5	97.0	97.2	96.9	96.3	95.6			
65	91.1	90.5	90.0	89.8	89.7	89.9	90.2	90.6	91.9	92.7	93.4	93.9	94.1	93.8	93.2	92.4			
70	87.6	87.0	86.6	86.4	86.4	86.5	86.8	87.3	88.6	89.3	90.0	90.5	90.6	90.3	89.7	88.9			
75	83.7	83.2	82.8	82.7	82.7	82.9	83.2	83.7	85.0	85.6	86.3	86.7	86.8	86.5	85.8	85.0			
80	79.7	79.1	78.9	78.8	78.8	79.0	79.3	79.7	81.1	81.7	82.3	82.6	82.7	82.3	81.7	80.9			
85	75.4	74.9	74.7	74.6	74.7	74.9	75.2	75.6	76.9	77.5	78.0	78.3	78.4	78.0	77.3	76.6			
90	71.0	70.5	70.3	70.3	70.4	70.5	70.9	71.3	72.7	73.2	73.7	74.0	74.0	73.5	72.9	72.3			
95	66.1	65.7	65.5	65.5	65.7	65.9	66.3	66.7	68.0	68.4	68.9	69.1	69.0	68.6	68.0	67.3			
100	61.3	61.0	60.8	60.8	61.0	61.2	61.6	62.0	63.2	63.6	64.0	64.1	64.0	63.6	63.1	62.4			
105	56.5	56.1	56.0	56.0	56.2	56.5	56.8	57.2	58.3	58.7	59.1	59.2	59.1	58.7	58.1	57.5			
110	51.6	51.3	51.2	51.2	51.4	51.7	52.0	52.4	53.5	53.8	54.1	54.2	54.0	53.7	53.2	52.6			
115	46.8	46.6	46.4	46.5	46.7	46.9	47.3	47.7	48.6	48.9	49.1	49.2	49.1	48.7	48.2	47.7			
120	42.1	41.8	41.8	41.8	42.0	42.3	42.6	42.9	43.8	44.1	44.2	44.3	44.1	43.8	43.3	42.9			
125	37.5	37.2	37.1	37.2	37.4	37.6	37.9	38.3	39.1	39.3	39.5	39.5	39.3	39.0	38.6	38.1			
130	32.7	32.8	32.7	32.7	33.4	33.1	33.4	33.8	34.5	34.7	34.8	34.8	34.6	34.3	34.0	33.6			
135	28.6	28.5	28.4	28.4	28.6	28.8	29.1	29.4	30.1	30.2	30.3	30.3	30.2	29.9	29.6	29.2			
140	24.5	24.3	24.3	24.3	24.5	24.6	24.9	25.2	25.8	26.0	26.1	26.1	26.0	25.7	25.4	25.0			
145	20.7	20.5	20.4	20.4	20.6	20.8	21.0	21.3	21.8	22.0	22.1	22.1	22.0	21.7	21.5	21.0			
150	17.1	16.9	16.8	16.8	17.0	17.1	17.3	17.6	18.1	18.3	18.4	18.4	18.3	18.1	17.1	15.6			
155	13.8	13.6	13.5	13.6	13.7	13.8	14.0	14.3	14.7	14.8	15.0	15.0	14.9	14.8	13.1	10.3			
160	10.9	10.6	10.6	10.6	10.7	10.8	11.0	11.2	11.7	11.7	11.8	11.9	11.9	11.8	10.1	6.90			
165	7.91	6.90	7.44	7.61	7.65	7.77	7.99	8.21	8.66	8.66	8.87	8.98	8.90	8.62	7.51	6.62			
170	0.26	2.37	3.52	3.52	3.53	3.64	3.81	4.02	4.58	4.61	4.60	4.78	4.76	4.63	3.75	3.49			
175	0.16	0.16	0.16	0.16	0.16	0.19	0.16	0.16	0.14	0.14	0.14	0.14	0.14	0.15	0.15	0.16			
180	0.16	0.16	0.16	0.16	0.16	0.17	0.17	0.16	0.16	0.16	0.16	0.16	0.16	0.16	0.17	0.17			

C Range: 0 - 360DEG  
 C Interval: 22.5DEG  
 Test Speed: HIGH  
 Temperature:24.2DEG  
 Operators:LSC  
 Test Date:2020-02-24

γ Range: 0 - 180DEG  
 γ Interval: 0.5DEG  
 Test System:EVERFINE GO-R5000\_V2 SYSTEM V2.0.363T  
 Humidity:52.0%  
 Test Distance:1.510m [K=1.0000]  
 Remarks:

Checker:

Assessor: LiHua