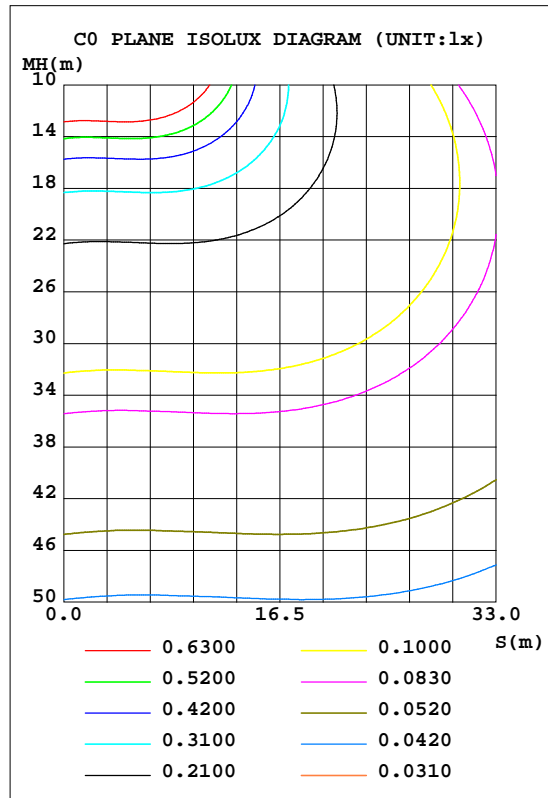
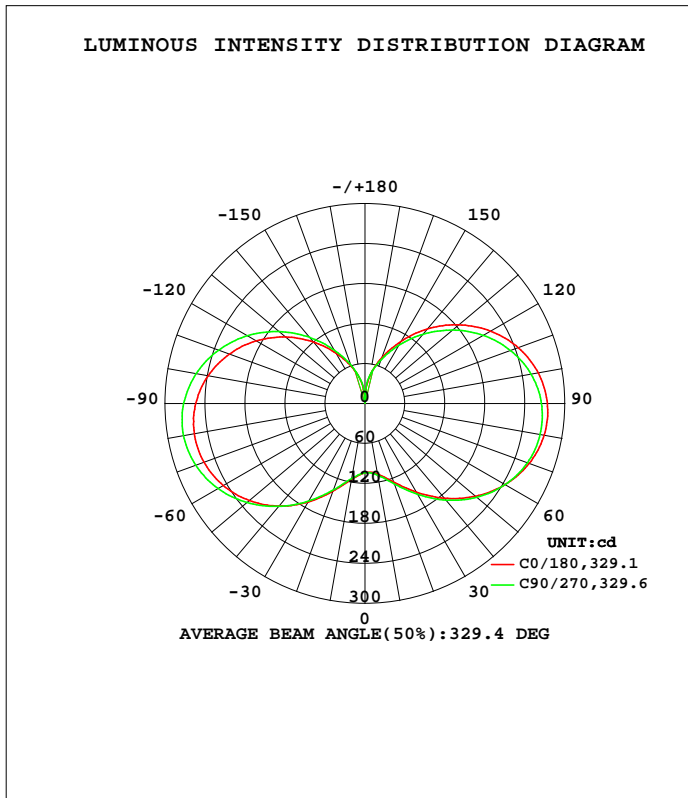


LUMINAIRE PHOTOMETRIC TEST REPORT

NAME: 20W LED STREET LIGHT BULB-E27	TYPE:	WEIGHT:
SPEC.:	DIM.:	SERIAL No.:
MFR.: FILUX	SUR.:	Shielding Angle:

DATA OF LAMP		PHOTOMETRIC DATA Eff: 130.84 lm/W			
MODEL	20W-E27	I <sub>max</sub> (cd)	279.4	S/MH(C0/180)	2.63
NOMINAL POWER(W)	20	LOR(%)	100.0	S/MH(C90/270)	2.66
RATED VOLTAGE(V)	230	TOTAL FLUX(lm)	2605.3	h UP, DN(C0-180)	23.1, 27.2
NOMINAL FLUX(lm)	2605.3	CIE CLASS	DIFFUSE	h UP, DN(C180-360)	22.0, 27.7
LAMPS INSIDE	1	h up(%)	45.1	CIBSE SHR NOM	2.00
TEST VOLTAGE(V)	230	h down(%)	54.9	CIBSE SHR MAX	2.00



C Range: 0 - 360DEG  
 C Interval: 22.5DEG  
 Test Speed: HIGH  
 Temperature:25.3DEG  
 Operators:wxc  
 Test Date:2020-08-14

Range: 0 - 180DEG  
 Interval: 1.0DEG  
 Test System:EVERFINE GO-SPEX500\_V1 SYSTEM V2.0.405.8  
 Humidity:65.0%  
 Test Distance:3.160m [K=1.0000]  
 Remarks:

ZONAL FLUX DIAGRAM

ZONAL FLUX DIAGRAM:

g	C0	C45	C90	C135	C180	C225	C270	C315	g	F zone	F total	%lum,lamp
10	107.6	106.9	109.2	112.8	115.7	116.7	114.4	110.7	0- 10	10.30	10.30	0.40,0.40
20	125.3	123.9	128.3	134.9	139.8	141.7	137.8	130.8	10- 20	34.71	45.01	1.73,1.73
30	153.3	151.7	157.1	165.2	170.8	173.5	168.8	160.3	20- 30	68.59	113.6	4.36,4.36
40	185.6	183.7	189.4	198.1	201.1	206.0	201.5	191.6	30- 40	112.7	226.3	8.69,8.69
50	216.6	213.7	219.1	228.6	226.5	234.9	231.2	218.8	40- 50	162.6	388.9	14.9,14.9
60	243.2	238.5	243.3	253.4	245.9	257.3	254.9	240.3	50- 60	211.9	600.8	23.1,23.1
70	262.5	256.1	259.7	270.5	257.4	271.5	270.4	254.4	60- 70	253.9	854.7	32.8,32.8
80	273.1	265.0	267.0	278.2	260.1	276.5	276.6	259.9	70- 80	282.5	1137	43.6,43.6
90	273.8	264.4	264.9	275.7	254.1	270.8	272.2	256.6	80- 90	293.3	1430	54.9,54.9
100	264.3	254.3	253.3	263.0	239.3	255.3	257.5	244.4	90-100	284.8	1715	65.8,65.8
110	245.0	235.2	232.8	240.8	216.8	231.3	234.1	224.2	100-110	258.1	1973	75.7,75.7
120	217.7	208.5	204.9	211.0	188.4	200.6	203.9	197.5	110-120	217.4	2191	84.1,84.1
130	183.9	176.0	171.8	175.3	155.4	164.5	168.0	165.6	120-130	168.5	2359	90.6,90.6
140	146.2	140.7	135.9	136.3	120.6	126.0	129.7	131.1	130-140	118.0	2477	95.1,95.1
150	107.5	105.0	100.5	97.68	87.28	89.22	92.83	97.01	140-150	72.73	2550	97.9,97.9
160	72.44	72.48	69.04	64.16	58.46	57.71	61.26	66.69	150-160	37.85	2588	99.3,99.3
170	41.77	44.41	43.11	33.98	33.11	29.59	34.44	41.02	160-170	14.97	2603	99.9,99.9
180	1.164	1.161	1.159	1.153	1.164	1.160	1.159	1.150	170-180	2.424	2605	100,100
DEG	LUMINOUS INTENSITY:cd									UNIT:lm		

0 - 180 DEG Zonal Flux:2605.3 %lum: 100.0%

0 - 180 DEG Zonal Flux:2605.3 %lum: 100.0%

All measured values may vary less than 35 %

from the average measured value in the 0 to 130 deg. zone: 90.6%

All measured values in the 0 to 130 deg. zone

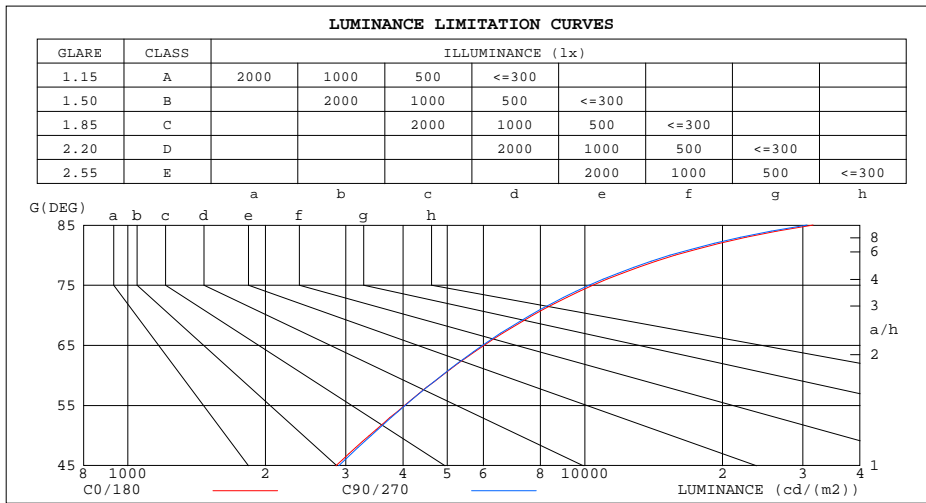
may vary less than 60% from the average value of itself: 100.0%

C Range: 0 - 360DEG  
 C Interval: 22.5DEG  
 Test Speed: HIGH  
 Temperature:25.3DEG  
 Operators:wxc  
 Test Date:2020-08-14

g Range: 0 - 180DEG  
 g Interval: 1.0DEG  
 Test System:EVERFINE GO-SPEX500\_V1 SYSTEM V2.0.405.8  
 Humidity:65.0%  
 Test Distance:3.160m [K=1.0000]  
 Remarks:

LUMINANCE LIMITATION CURVES

NAME: 20W LED STREET LIGHT BULB-E27	TYPE:	WEIGHT:
SPEC.:	DIM.:	SERIAL No.:
MFR.: FILUX	SUR.:	Shielding Angle:



LUMINANCE cd/(m2)		
G(DEG)	C0/180	C90/270
85	31578	30640
80	15756	15370
75	10415	10211
70	7689	7590
65	6020	5972
60	4873	4863
55	4027	4044
50	3376	3407
45	2853	2895

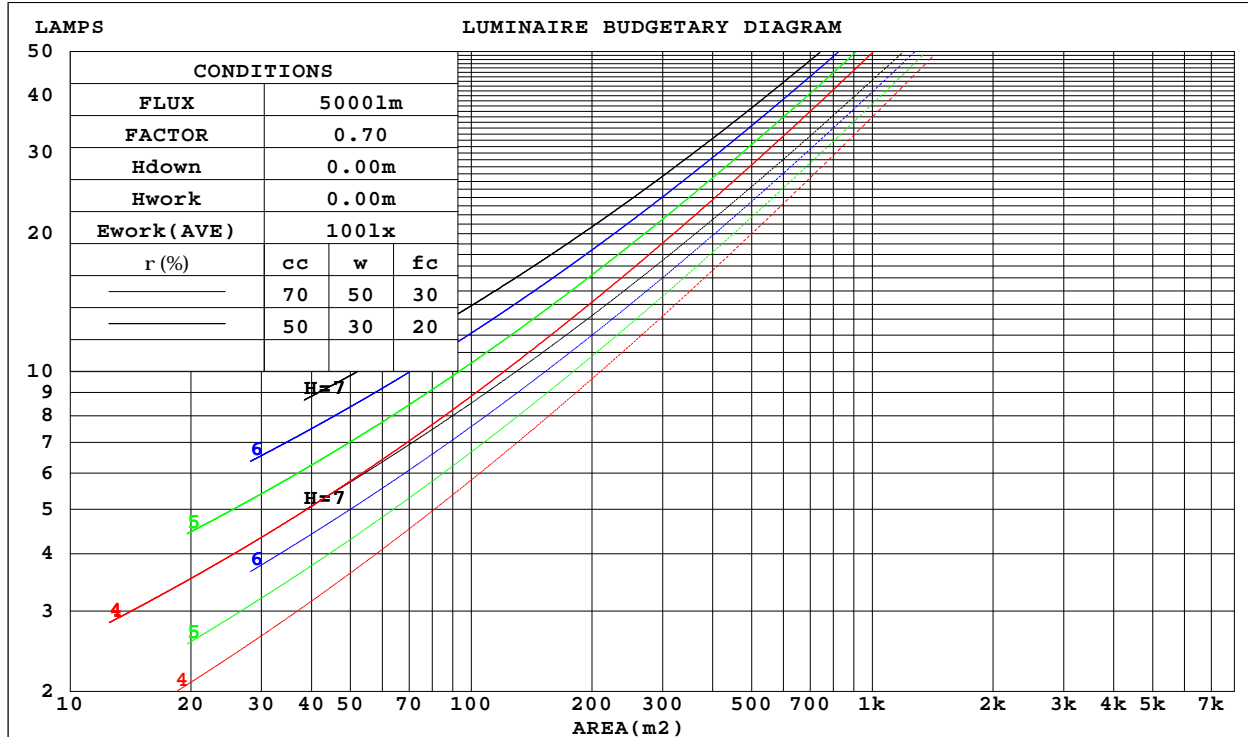
C Range: 0 - 360DEG  
 C Interval: 22.5DEG  
 Test Speed: HIGH  
 Temperature: 25.3DEG  
 Operators: wxc  
 Test Date: 2020-08-14

G Range: 0 - 180DEG  
 G Interval: 1.0DEG  
 Test System: EVERFINE GO-SPEX500\_V1 SYSTEM V2.0.405.8  
 Humidity: 65.0%  
 Test Distance: 3.160m [K=1.0000]  
 Remarks:

CU AND LUMINAIRE BUDGETARY ESTIMATE DIAGRAM

NAME: 20W LED STREET LIGHT BULB-E27	TYPE:	WEIGHT:
SPEC.:	DIM.:	SERIAL No.:
MFR.: FILUX	SUR.:	Shielding Angle:

r <sub>cc</sub>	80%			70%			50%			30%			10%			0
r <sub>w</sub>	50%	30%	10%	50%	30%	10%	50%	30%	10%	50%	30%	10%	50%	30%	10%	0
r <sub>fc</sub>	20%			20%			20%			20%			20%			0
RCR	RCR:Room Cavity Ratio						Coefficients of Utilization(CU)									
0.0	1.08	1.08	1.08	1.01	1.01	1.01	.86	.86	.86	.73	.73	.73	.61	.61	.61	.55
1.0	.86	.80	.75	.80	.74	.69	.67	.63	.59	.55	.52	.49	.45	.42	.40	.34
2.0	.72	.64	.57	.66	.59	.52	.55	.49	.44	.45	.41	.37	.36	.32	.29	.24
3.0	.62	.52	.45	.57	.48	.41	.47	.40	.35	.38	.33	.29	.30	.26	.23	.18
4.0	.53	.44	.36	.49	.40	.33	.41	.34	.28	.33	.27	.23	.26	.22	.18	.14
5.0	.47	.37	.30	.43	.34	.28	.36	.29	.23	.29	.23	.19	.23	.18	.15	.11
6.0	.42	.32	.25	.38	.30	.23	.32	.25	.20	.26	.20	.16	.20	.16	.12	.09
7.0	.37	.28	.22	.34	.26	.20	.28	.22	.17	.23	.18	.14	.18	.14	.10	.08
8.0	.33	.25	.19	.31	.23	.17	.26	.19	.14	.21	.16	.12	.17	.12	.09	.06
9.0	.30	.22	.16	.28	.20	.15	.23	.17	.13	.19	.14	.10	.15	.11	.08	.06
10.0	.28	.20	.14	.26	.18	.13	.21	.15	.11	.18	.13	.09	.14	.10	.07	.05



C Range: 0 - 360DEG  
 C Interval: 22.5DEG  
 Test Speed: HIGH  
 Temperature:25.3DEG  
 Operators:wxc  
 Test Date:2020-08-14

Range: 0 - 180DEG  
 Interval: 1.0DEG  
 Test System:EVERFINE GO-SPEX500\_V1 SYSTEM V2.0.405.8  
 Humidity:65.0%  
 Test Distance:3.160m [K=1.0000]  
 Remarks:

WEC AND CCEC

NAME: 20W LED STREET LIGHT BULB-E27	TYPE:	WEIGHT:
SPEC.:	DIM.:	SERIAL No.:
MFR.: FILUX	SUR.:	Shielding Angle:

rcc	80%			70%			50%			30%			10%			0
rw	50%	30%	10%	50%	30%	10%	50%	30%	10%	50%	30%	10%	50%	30%	10%	0
rfc	20%			20%			20%			20%			20%			0
RCR	RCR:Room Cavity Ratio						Wall Exitance Coefficients(WEC)									
0.0																
1.0	.439	.250	.079	.418	.238	.076	.378	.217	.069	.342	.197	.063	.309	.179	.058	
2.0	.362	.198	.061	.343	.189	.058	.307	.171	.053	.274	.153	.048	.243	.137	.043	
3.0	.313	.167	.050	.296	.158	.048	.263	.142	.043	.232	.127	.039	.204	.113	.035	
4.0	.277	.144	.042	.261	.137	.040	.231	.122	.037	.203	.109	.033	.177	.096	.029	
5.0	.249	.127	.037	.234	.120	.035	.207	.108	.032	.181	.095	.028	.157	.084	.025	
6.0	.226	.113	.032	.213	.107	.031	.187	.096	.028	.163	.085	.025	.141	.074	.022	
7.0	.207	.102	.029	.195	.097	.028	.171	.086	.025	.149	.076	.022	.128	.067	.020	
8.0	.191	.093	.026	.179	.088	.025	.157	.079	.022	.137	.069	.020	.118	.060	.018	
9.0	.177	.086	.024	.166	.081	.023	.146	.072	.020	.127	.064	.018	.109	.055	.016	
10.0	.165	.079	.022	.155	.075	.021	.136	.067	.019	.118	.059	.017	.101	.051	.015	

rcc	80%			70%			50%			30%			10%			0
rw	50%	30%	10%	50%	30%	10%	50%	30%	10%	50%	30%	10%	50%	30%	10%	0
rfc	20%			20%			20%			20%			20%			0
RCR	RCR:Room Cavity Ratio						Ceiling Cavity Exitance Coefficients(CCEC)									
0.0	.534	.534	.534	.456	.456	.456	.312	.312	.312	.179	.179	.179	.057	.057	.057	
1.0	.536	.501	.471	.458	.430	.405	.313	.296	.280	.180	.171	.163	.058	.055	.053	
2.0	.530	.480	.438	.454	.413	.379	.311	.286	.264	.179	.166	.155	.058	.054	.050	
3.0	.523	.465	.419	.449	.401	.363	.308	.279	.255	.178	.163	.150	.057	.053	.049	
4.0	.516	.454	.406	.443	.392	.353	.304	.273	.249	.176	.160	.147	.057	.052	.048	
5.0	.508	.445	.398	.437	.385	.346	.301	.269	.244	.174	.158	.145	.056	.052	.048	
6.0	.501	.437	.392	.431	.379	.341	.297	.265	.241	.172	.156	.143	.056	.051	.047	
7.0	.494	.431	.387	.425	.374	.338	.293	.262	.239	.171	.154	.142	.055	.051	.047	
8.0	.487	.426	.384	.419	.370	.335	.290	.259	.238	.169	.153	.142	.055	.050	.047	
9.0	.481	.422	.381	.414	.366	.333	.287	.257	.236	.167	.152	.141	.054	.050	.047	
10.0	.475	.418	.379	.409	.363	.331	.284	.255	.235	.166	.151	.140	.054	.050	.047	

C Range: 0 - 360DEG  
 C Interval: 22.5DEG  
 Test Speed: HIGH  
 Temperature:25.3DEG  
 Operators:wxc  
 Test Date:2020-08-14

g Range: 0 - 180DEG  
 g Interval: 1.0DEG  
 Test System:EVERFINE GO-SPEX500\_V1 SYSTEM V2.0.405.8  
 Humidity:65.0%  
 Test Distance:3.160m [K=1.0000]  
 Remarks:

UGR(Unified Glare Rating) Table

NAME: 20W LED STREET LIGHT BULB-E27		TYPE:					WEIGHT:				
SPEC.:		DIM.:					SERIAL No.:				
MFR.: FILUX		SUR.:					Shielding Angle:				
ceiling/cavity	0.7	0.7	0.5	0.5	0.3	0.7	0.7	0.5	0.5	0.3	
walls	0.5	0.3	0.5	0.3	0.3	0.5	0.3	0.5	0.3	0.3	
working plane	0.2	0.2	0.2	0.2	0.2	0.2	0.2	0.2	0.2	0.2	
Room dimensions	Viewed crosswise					Viewed endwise					
x = 2H y = 2H	11.7	12.8	12.5	13.7	14.8	11.6	12.7	12.4	13.6	14.7	
3H	15.3	16.4	16.1	17.2	18.3	15.1	16.2	16.0	17.1	18.2	
4H	17.3	18.3	18.1	19.2	20.3	17.1	18.1	18.0	19.0	20.2	
6H	19.5	20.4	20.4	21.3	22.5	19.3	20.2	20.2	21.1	22.3	
8H	20.7	21.6	21.6	22.5	23.7	20.5	21.4	21.4	22.3	23.5	
12H	22.0	22.9	22.9	23.8	25.0	21.8	22.7	22.7	23.6	24.8	
4H 2H	12.8	13.8	13.6	14.7	15.8	12.7	13.7	13.6	14.6	15.7	
3H	16.5	17.3	17.3	18.3	19.4	16.3	17.2	17.2	18.1	19.3	
4H	18.6	19.4	19.5	20.3	21.5	18.4	19.2	19.3	20.1	21.3	
6H	20.9	21.6	21.8	22.6	23.8	20.7	21.4	21.6	22.3	23.6	
8H	22.2	22.9	23.1	23.8	25.1	21.9	22.6	22.9	23.6	24.8	
12H	23.6	24.3	24.6	25.2	26.5	23.4	24.0	24.3	25.0	26.2	
8H 4H	19.3	20.0	20.2	20.9	22.2	19.1	19.8	20.1	20.8	22.0	
6H	21.9	22.5	22.8	23.4	24.7	21.7	22.3	22.6	23.2	24.5	
8H	23.4	23.9	24.3	24.9	26.1	23.1	23.6	24.1	24.6	25.9	
12H	25.0	25.5	26.0	26.5	27.8	24.8	25.2	25.7	26.2	27.5	
12H 4H	19.5	20.1	20.4	21.1	22.3	19.4	20.0	20.3	21.0	22.2	
6H	22.2	22.7	23.2	23.7	25.0	22.0	22.5	23.0	23.5	24.8	
8H	23.8	24.2	24.8	25.2	26.5	23.6	24.0	24.5	25.0	26.3	
Variations with the observer position at spacings:											
S = 1.0H	+ 0.1 / - 0.1					+ 0.1 / - 0.1					
1.5H	+ 0.2 / - 0.3					+ 0.2 / - 0.3					
2.0H	+ 0.3 / - 0.4					+ 0.3 / - 0.4					

CIE Pub.117, 2605 lm Total Lamp Luminous Flux Correct (8log(F/F0) = 3.3)

C Range: 0 - 360DEG  
 C Interval: 22.5DEG  
 Test Speed: HIGH  
 Temperature: 25.3DEG  
 Operators: wxc  
 Test Date: 2020-08-14

g Range: 0 - 180DEG  
 g Interval: 1.0DEG  
 Test System: EVERFINE GO-SPEX500\_V1 SYSTEM V2.0.405.8  
 Humidity: 65.0%  
 Test Distance: 3.160m [K=1.0000]  
 Remarks:

UTILIZATION FACTORS TABLE

NAME: 20W LED STREET LIGHT BULB-E27	TYPE:	WEIGHT:
SPEC.:	DIM.:	SERIAL No.:
MFR.: FILUX	SUR.:	Shielding Angle:

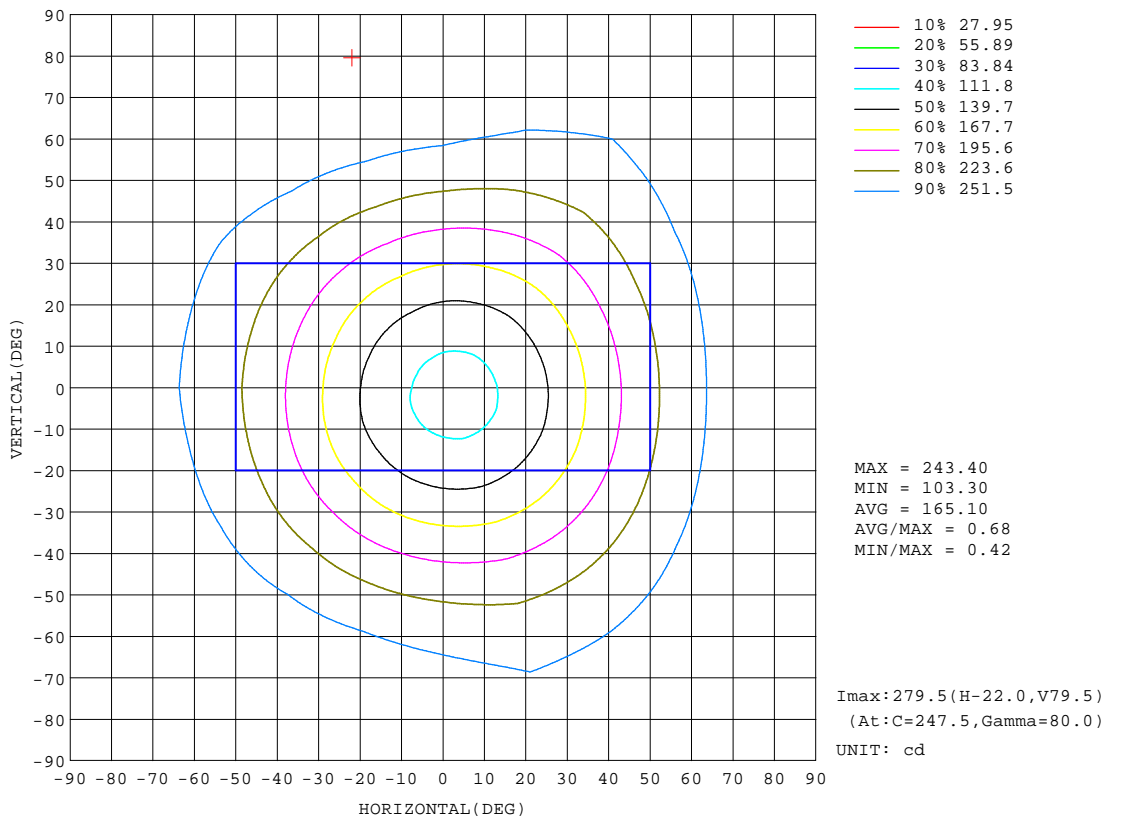
REFLECTANCE										
Ceiling	0.8	0.8	0.8	0.7	0.7	0.7	0.5	0.5	0.5	0
Walls	0.7	0.5	0.3	0.7	0.5	0.3	0.7	0.5	0.3	0
Working plane	0.2	0.2	0.2	0.2	0.2	0.2	0.2	0.2	0.2	0
ROOM INDEX	UTILIZATION FACTORS(PERCENT) $k(RI) \times RCR = 5$									
k = 0.60	35	22	14	33	21	14	30	19	13	6
0.80	43	29	20	41	28	19	37	25	18	9
1.00	50	35	26	47	34	25	42	32	22	11
1.25	57	42	32	53	40	31	47	35	28	15
1.50	63	48	38	58	45	36	51	40	32	17
2.00	71	57	47	66	53	44	57	47	39	22
2.50	76	63	53	71	59	50	61	51	44	25
3.00	80	68	59	74	64	55	64	55	48	28
4.00	85	75	67	79	70	62	68	61	54	32
5.00	89	80	72	83	75	68	70	64	59	35
ROOM INDEX	UF(total)									Direct
According to DIN EN 13032-2 2004			Suspended				SHRNOM = 1.00			

C Range: 0 - 360DEG  
 C Interval: 22.5DEG  
 Test Speed: HIGH  
 Temperature:25.3DEG  
 Operators:wxc  
 Test Date:2020-08-14

g Range: 0 - 180DEG  
 Interval: 1.0DEG  
 Test System:EVERFINE GO-SPEX500\_V1 SYSTEM V2.0.405.8  
 Humidity:65.0%  
 Test Distance:3.160m [K=1.0000]  
 Remarks:

**ISOCANDELA DIAGRAM**

<b>NAME:</b> 20W LED STREET LIGHT BULB-E27	<b>TYPE:</b>	<b>WEIGHT:</b>
<b>SPEC.:</b>	<b>DIM.:</b>	<b>SERIAL No.:</b>
<b>MFR.:</b> FILUX	<b>SUR.:</b>	<b>Shielding Angle:</b>



**C Range:** 0 - 360DEG  
**C Interval:** 22.5DEG  
**Test Speed:** HIGH  
**Temperature:** 25.3DEG  
**Operators:** wxc  
**Test Date:** 2020-08-14

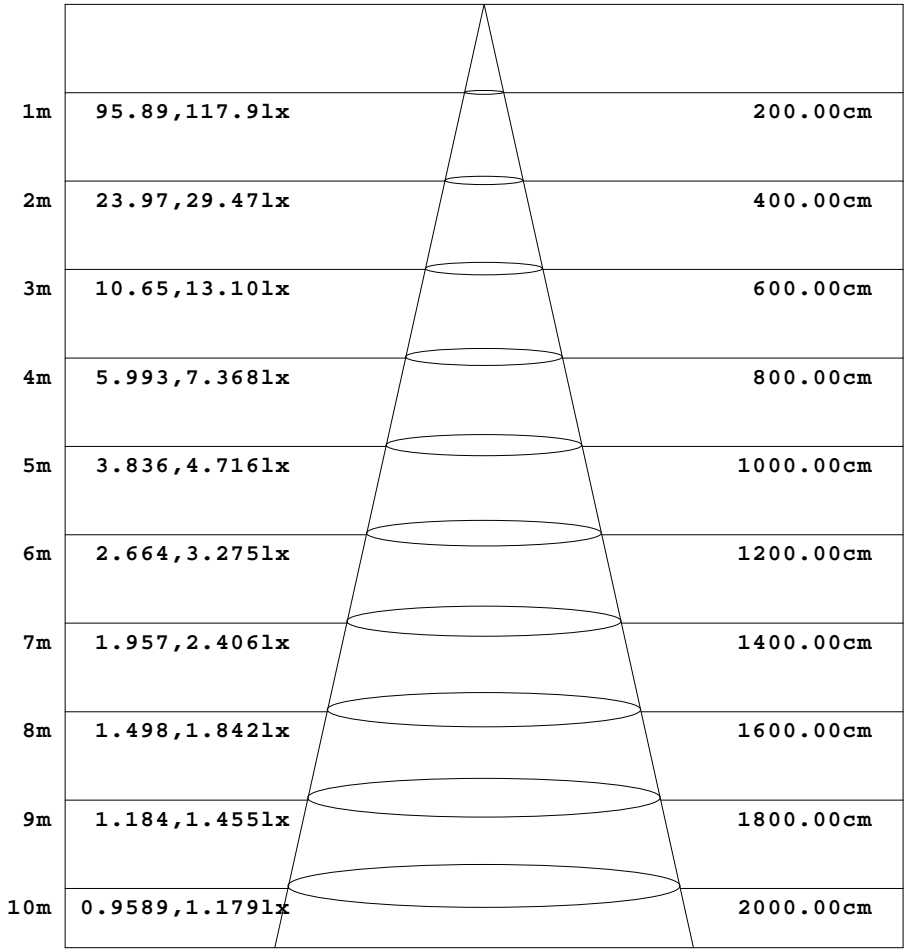
**Page Range:** 0 - 180DEG  
**Interval:** 1.0DEG  
**Test System:** EVERFINE GO-SPEX500\_V1 SYSTEM V2.0.405.8  
**Humidity:** 65.0%  
**Test Distance:** 3.160m [K=1.0000]  
**Remarks:**



**AAI Figure**

NAME: 20W LED STREET LIGHT BULB-E27	TYPE:	WEIGHT:
SPEC.:	DIM.:	SERIAL No.:
MFR.: FILUX	SUR.:	Shielding Angle:

Flux out:301.2 lm



Height                      Eavg, Emax                      Angle:90.00deg                      Diameter

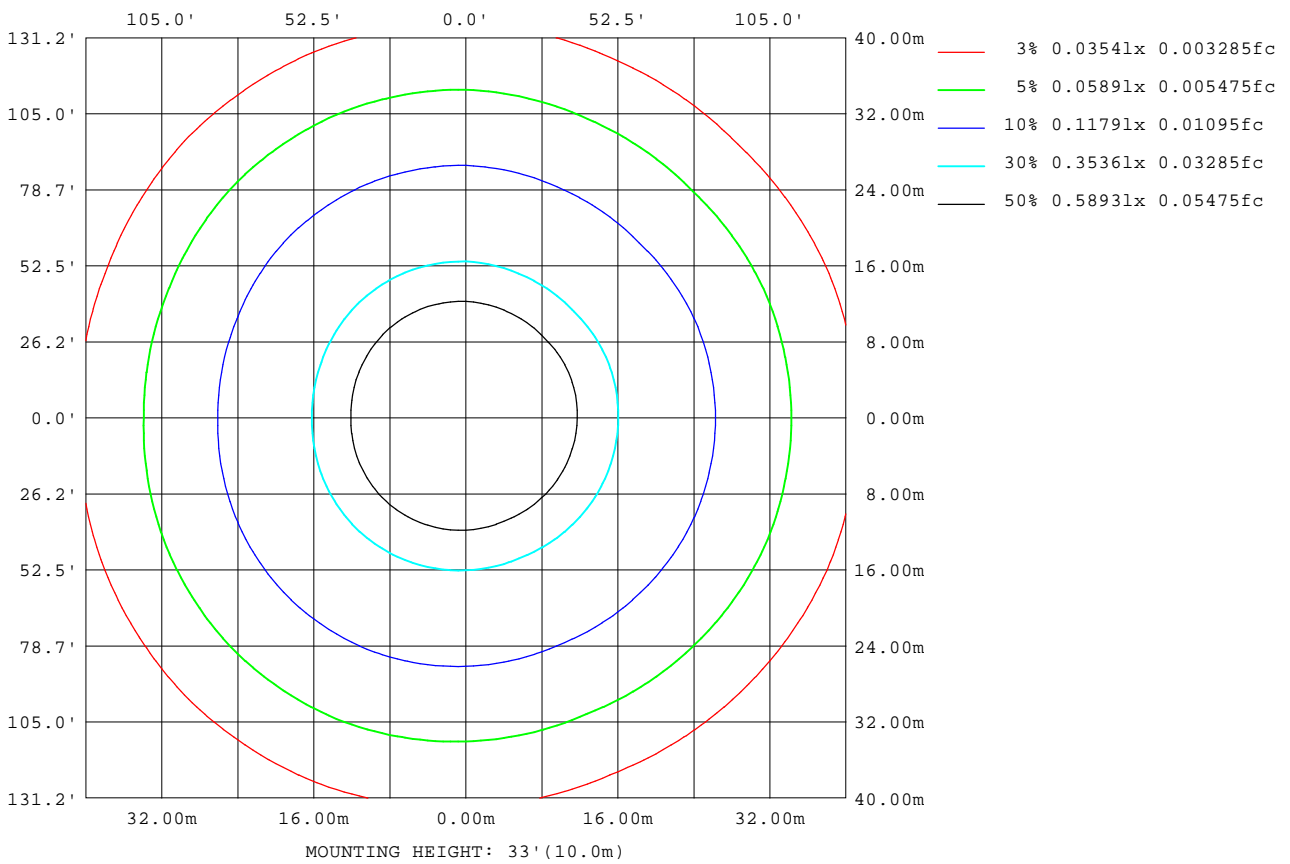
Note:The Curves indicate the illuminated area and the average illumination when the luminaire is at different distance.

C Range: 0 - 360DEG  
 C Interval: 22.5DEG  
 Test Speed: HIGH  
 Temperature:25.3DEG  
 Operators:wxc  
 Test Date:2020-08-14

Range: 0 - 180DEG  
 Interval: 1.0DEG  
 Test System:EVERFINE GO-SPEX500\_V1 SYSTEM V2.0.405.8  
 Humidity:65.0%  
 Test Distance:3.160m [K=1.0000]  
 Remarks:

**ISOLUX DIAGRAM**

<b>NAME:</b> 20W LED STREET LIGHT BULB-E27	<b>TYPE:</b>	<b>WEIGHT:</b>
<b>SPEC.:</b>	<b>DIM.:</b>	<b>SERIAL No.:</b>
<b>MFR.:</b> FILUX	<b>SUR.:</b>	<b>Shielding Angle:</b>



**C Range:** 0 - 360DEG  
**C Interval:** 22.5DEG  
**Test Speed:** HIGH  
**Temperature:** 25.3DEG  
**Operators:** wxc  
**Test Date:** 2020-08-14

**Page Range:** 0 - 180DEG  
**Page Interval:** 1.0DEG  
**Test System:** EVERFINE GO-SPEX500\_V1 SYSTEM V2.0.405.8  
**Humidity:** 65.0%  
**Test Distance:** 3.160m [K=1.0000]  
**Remarks:**

LED Avg.L Report

NAME: 20W LED STREET LIGHT BULB-E27	TYPE:	WEIGHT:
SPEC.:	DIM.:	SERIAL No.:
MFR.: FILUX	SUR.:	Shielding Angle:

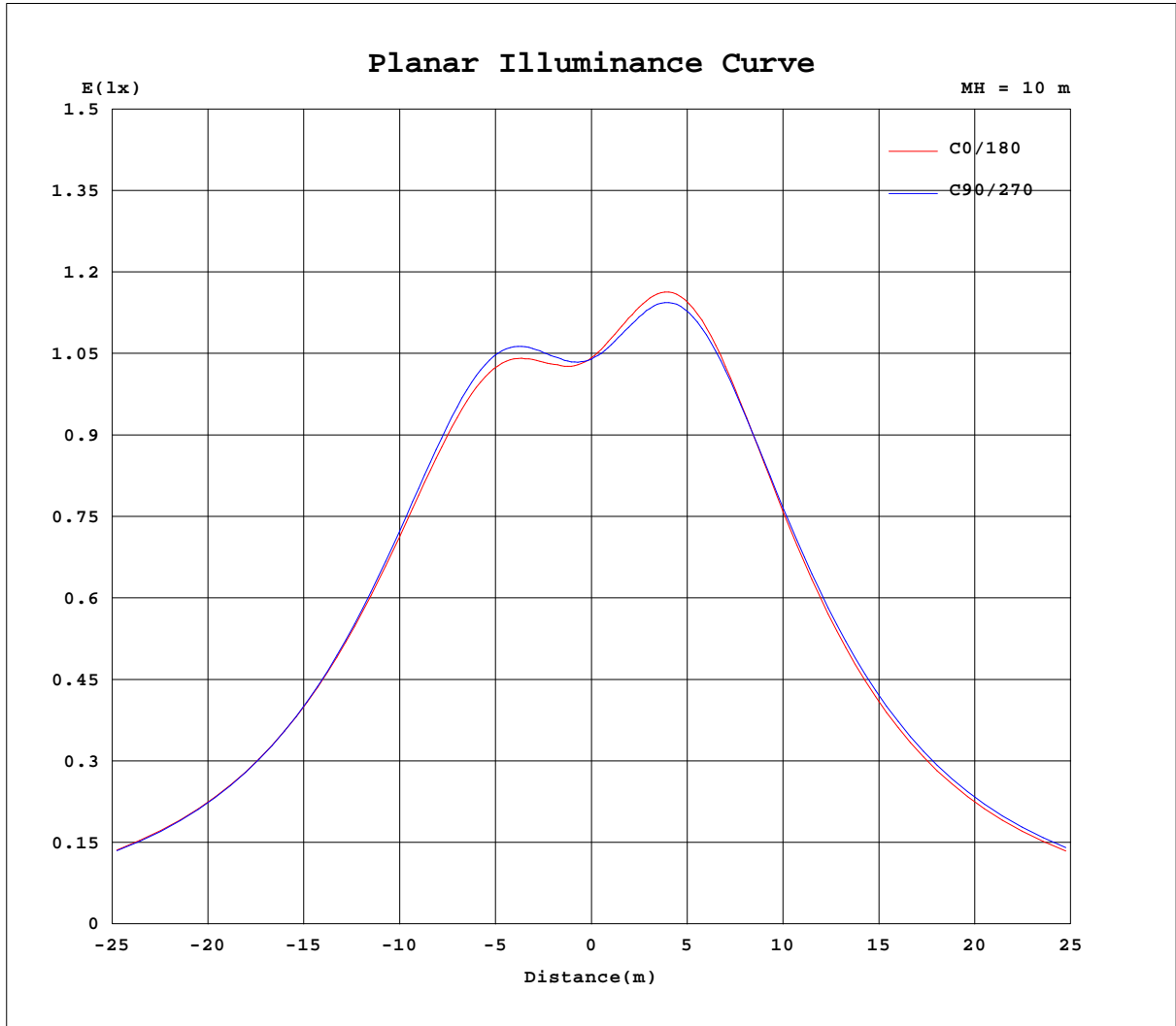
AvgL	cd/m2
L_0~180(65)av	5993
L_0~180(75)av	10217
L_0~180(85)av	30577
L_90~270(65)av	6110
L_90~270(75)av	10417
L_90~270(85)av	31134
L_45(65)av	6066
L_45(75)av	10343
L_45(85)av	30930

Standard: GB/T 29293-2012

C Range: 0 - 360DEG  
 C Interval: 22.5DEG  
 Test Speed: HIGH  
 Temperature:25.3DEG  
 Operators:wxc  
 Test Date:2020-08-14

g Range: 0 - 180DEG  
 Interval: 1.0DEG  
 Test System:EVERFINE GO-SPEX500\_V1 SYSTEM V2.0.405.8  
 Humidity:65.0%  
 Test Distance:3.160m [K=1.0000]  
 Remarks:

Planar Illuminance Curve



C Range: 0 - 360DEG  
 C Interval: 22.5DEG  
 Test Speed: HIGH  
 Temperature: 25.3DEG  
 Operators: wxc  
 Test Date: 2020-08-14

Page Range: 0 - 180DEG  
 Interval: 1.0DEG  
 Test System: EVERFINE GO-SPEX500\_V1 SYSTEM V2.0.405.8  
 Humidity: 65.0%  
 Test Distance: 3.160m [K=1.0000]  
 Remarks:

LUMINOUS DISTRIBUTION INTENSITY DATA

NAME: 20W LED STREET LIGHT BULB-E27	TYPE:	WEIGHT:
SPEC.:	DIM.:	SERIAL No.:
MFR.: FILUX	SUR.:	Shielding Angle:

Table--1

UNIT: cd

C(DEG) g (DEG)	0	22.5	45	67.5	90	112.5	135	157.5	180	202.5	225	247.5	270	292.5	315	337.5			
0	104	104	104	104	104	104	104	104	104	104	104	104	104	104	104	104			
5	104	103	104	104	105	106	107	107	108	109	109	108	107	107	105	105			
10	108	106	107	107	109	111	113	114	116	117	117	116	114	113	111	109			
15	115	113	114	115	117	119	122	124	126	128	128	127	125	122	119	117			
20	125	124	124	125	128	131	135	137	140	142	142	141	138	135	131	128			
25	138	136	137	138	142	145	149	152	155	157	157	156	153	149	145	142			
30	153	151	152	153	157	161	165	168	171	173	173	173	169	165	160	157			
35	169	167	168	169	173	177	182	184	186	189	190	189	185	181	176	174			
40	186	183	184	185	189	194	198	200	201	204	206	205	202	196	192	190			
45	201	199	199	199	205	210	214	215	215	218	221	221	217	211	206	205			
50	217	215	214	213	219	224	229	229	227	230	235	235	231	224	219	220			
55	231	229	227	225	232	238	242	241	237	241	247	248	244	236	230	233			
60	243	242	239	236	243	250	253	251	246	249	257	258	255	245	240	245			
65	254	253	248	245	253	260	263	260	253	256	266	267	264	253	248	254			
70	262	262	256	251	260	268	270	266	257	261	272	274	270	259	254	262			
75	269	268	262	256	264	274	276	270	260	263	275	278	275	262	258	268			
80	273	273	265	259	267	277	278	271	260	264	276	279	277	264	260	270			
85	275	275	266	259	267	278	278	270	258	261	275	278	276	263	259	271			
90	274	274	264	257	265	276	276	266	254	257	271	275	272	259	257	269			
95	270	271	261	253	260	271	271	261	248	250	264	269	266	253	251	264			
100	264	265	254	246	253	264	263	253	239	241	255	260	257	245	244	258			
105	256	256	246	238	244	254	253	242	229	231	244	250	247	235	235	249			
110	245	246	235	227	233	242	241	230	217	218	231	237	234	223	224	238			
115	232	233	223	215	220	228	227	216	203	204	217	222	220	210	212	225			
120	218	218	208	202	205	213	211	201	188	188	201	206	204	195	197	211			
125	201	202	193	186	189	196	194	184	172	172	183	188	186	179	182	194			
130	184	185	176	170	172	178	175	166	155	155	164	169	168	162	166	177			
135	165	166	159	153	154	159	156	147	138	137	145	149	149	144	148	159			
140	146	147	141	136	136	139	136	129	121	120	126	129	130	127	131	141			
145	127	128	123	119	118	120	117	110	104	102	107	110	111	109	114	122			
150	107	109	105	102	100	101	97.7	92.3	87.3	86.1	89.2	91.3	92.8	92.9	97.0	104			
155	89.3	90.3	88.2	85.6	84.2	83.2	80.1	76.0	72.2	71.0	72.9	74.2	76.3	77.4	81.3	86.5			
160	72.4	73.7	72.5	70.7	69.0	67.4	64.2	61.0	58.5	57.3	57.7	58.7	61.3	63.3	66.7	70.5			
165	56.9	58.0	58.2	57.4	55.5	52.3	49.2	46.5	46.0	45.0	43.1	44.1	47.1	50.9	53.6	55.4			
170	41.8	43.0	44.4	45.4	43.1	38.5	34.0	31.7	33.1	32.8	29.6	29.8	34.4	39.5	41.0	40.9			
175	25.6	25.4	27.0	27.7	25.4	21.8	19.8	17.8	9.94	8.97	12.6	14.6	16.2	19.2	21.9	25.3			
180	1.16	1.16	1.16	1.16	1.16	1.15	1.15	1.15	1.16	1.16	1.16	1.16	1.16	1.15	1.15	1.15			

C Range: 0 - 360DEG  
 C Interval: 22.5DEG  
 Test Speed: HIGH  
 Temperature: 25.3DEG  
 Operators: wxc  
 Test Date: 2020-08-14

g Range: 0 - 180DEG  
 Interval: 1.0DEG  
 Test System: EVERFINE GO-SPEX500\_V1 SYSTEM V2.0.405.8  
 Humidity: 65.0%  
 Test Distance: 3.160m [K=1.0000]  
 Remarks: