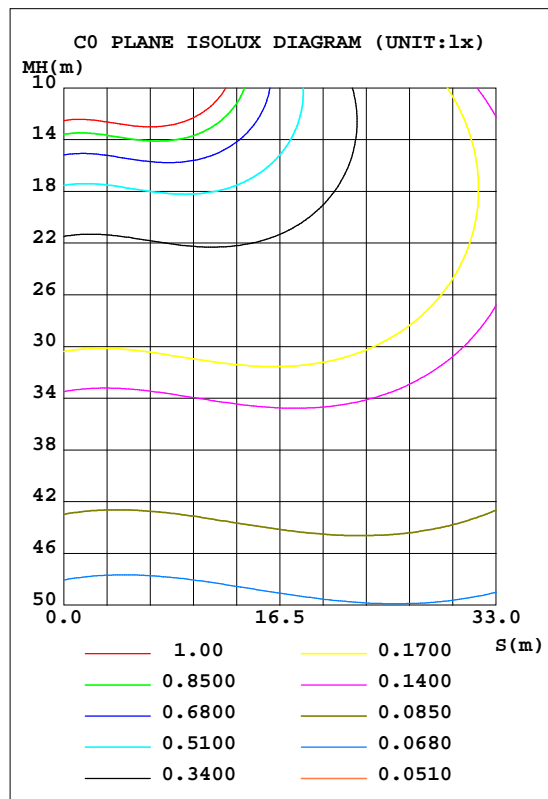
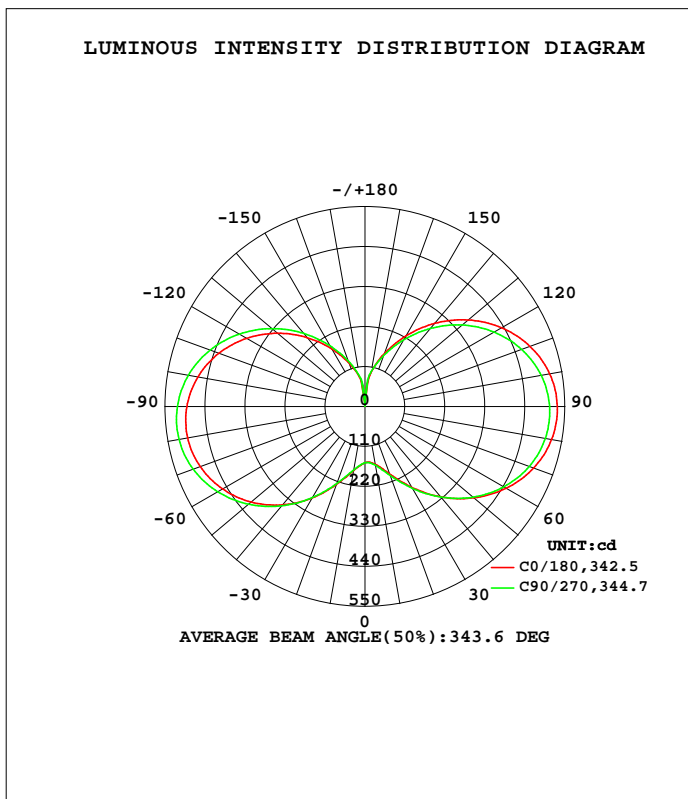


LUMINAIRE PHOTOMETRIC TEST REPORT

NAME: 40W LED STREET LIGHT BULB-E27	TYPE:	WEIGHT:
SPEC.:	DIM.:	SERIAL No.:
MFR.: FILUX	SUR.:	Shielding Angle:

DATA OF LAMP		PHOTOMETRIC DATA Eff: 126.20 lm/W			
MODEL	40W-E27	I _{max} (cd)	534.4	S/MH(C0/180)	2.93
NOMINAL POWER(W)	40	LOR(%)	100.0	S/MH(C90/270)	2.96
RATED VOLTAGE(V)	230	TOTAL FLUX(lm)	4941.2	h UP, DN(C0-180)	23.9, 26.0
NOMINAL FLUX(lm)	4941.16	CIE CLASS	DIFFUSE	h UP, DN(C180-360)	23.2, 26.9
LAMPS INSIDE	1	h up(%)	47.1	CIBSE SHR NOM	2.00
TEST VOLTAGE(V)	230	h down(%)	52.9	CIBSE SHR MAX	2.00



C Range: 0 - 360DEG
 C Interval: 22.5DEG
 Test Speed: HIGH
 Temperature:25.3DEG
 Operators:wxc
 Test Date:2020-08-14

Range: 0 - 180DEG
 Interval: 1.0DEG
 Test System:EVERFINE GO-SPEX500_V1 SYSTEM V2.0.405.8
 Humidity:65.0%
 Test Distance:3.160m [K=1.0000]
 Remarks:

ZONAL FLUX DIAGRAM

ZONAL FLUX DIAGRAM:

g	C0	C45	C90	C135	C180	C225	C270	C315	g	F zone	F total	%lum,lamp
10	161.5	159.7	164.2	172.5	178.9	181.3	176.8	168.4	0- 10	15.55	15.55	0.31,0.31
20	197.0	192.7	201.5	217.1	227.5	233.3	224.8	208.4	10- 20	54.39	69.94	1.42,1.42
30	256.2	248.6	259.6	280.1	290.3	300.0	289.2	268.1	20- 30	113.1	183.0	3.7,3.7
40	324.8	313.6	325.5	347.6	353.2	368.0	356.8	333.3	30- 40	193.9	377.0	7.63,7.63
50	391.5	375.6	388.3	410.0	409.1	429.6	418.4	394.0	40- 50	288.7	665.7	13.5,13.5
60	449.4	428.6	441.8	462.5	453.2	479.9	468.5	444.4	50- 60	385.3	1051	21.3,21.3
70	494.3	468.6	481.5	500.5	482.8	514.6	503.2	481.3	60- 70	470.4	1521	30.8,30.8
80	521.6	492.2	504.2	520.6	495.4	530.4	519.6	501.5	70- 80	531.6	2053	41.5,41.5
90	529.3	498.0	507.9	521.0	490.1	526.4	516.1	503.4	80- 90	559.6	2613	52.9,52.9
100	516.4	484.7	492.6	501.5	467.1	502.4	493.9	486.5	90-100	550.1	3163	64,64
110	483.7	453.7	459.2	463.7	428.2	460.0	453.9	452.1	100-110	504.3	3667	74.2,74.2
120	434.0	407.5	410.1	409.9	375.8	402.4	399.1	402.9	110-120	429.4	4096	82.9,82.9
130	370.9	349.8	349.2	344.7	314.2	334.2	333.9	342.4	120-130	336.8	4433	89.7,89.7
140	299.0	284.6	280.6	272.5	247.9	259.9	263.1	275.7	130-140	239.4	4673	94.6,94.6
150	223.7	217.4	211.0	199.3	183.4	186.8	193.4	207.6	140-150	150.2	4823	97.6,97.6
160	154.4	154.4	148.0	134.9	126.1	123.8	132.2	145.6	150-160	79.88	4903	99.2,99.2
170	93.82	100.9	96.15	74.53	78.81	66.52	82.86	92.85	160-170	32.66	4935	99.9,99.9
180	1.891	1.885	1.876	1.857	1.894	1.884	1.879	1.855	170-180	5.766	4941	100,100
DEG	LUMINOUS INTENSITY:cd									UNIT:lm		

0 - 180 DEG Zonal Flux:4941.2 %lum: 100.0%

0 - 180 DEG Zonal Flux:4941.2 %lum: 100.0%

All measured values may vary less than 35 %

from the average measured value in the 0 to 130 deg. zone: 81.9%

All measured values in the 0 to 130 deg. zone

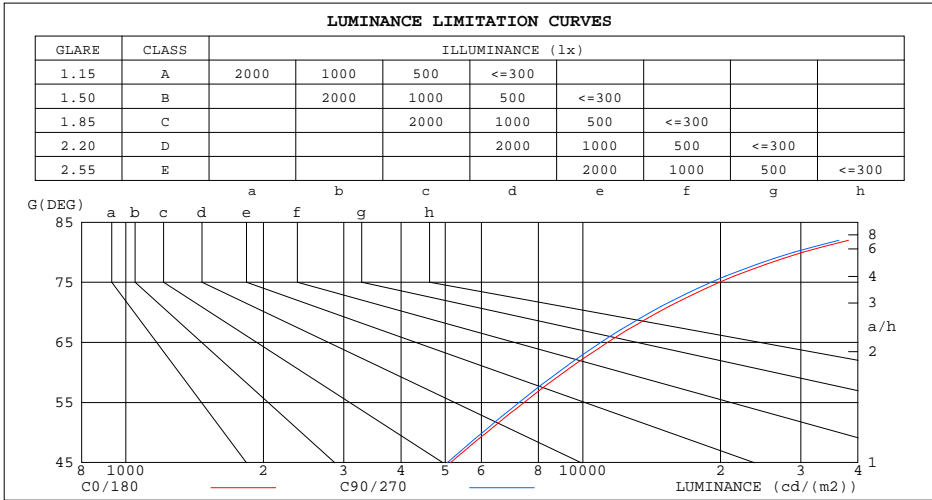
may vary less than 60% from the average value of itself: 100.0%

C Range: 0 - 360DEG
 C Interval: 22.5DEG
 Test Speed: HIGH
 Temperature:25.3DEG
 Operators:wxc
 Test Date:2020-08-14

g Range: 0 - 180DEG
 g Interval: 1.0DEG
 Test System:EVERFINE GO-SPEX500_V1 SYSTEM V2.0.405.8
 Humidity:65.0%
 Test Distance:3.160m [K=1.0000]
 Remarks:

LUMINANCE LIMITATION CURVES

NAME: 40W LED STREET LIGHT BULB-E27	TYPE:	WEIGHT:
SPEC.:	DIM.:	SERIAL No.:
MFR.: FILUX	SUR.:	Shielding Angle:



LUMINANCE cd/(m2)		
G(DEG)	C0/180	C90/270
85	61247	58212
80	30358	28984
75	19928	19097
70	14605	14053
65	11331	10949
60	9084	8821
55	7432	7248
50	6156	6031
45	5128	5050

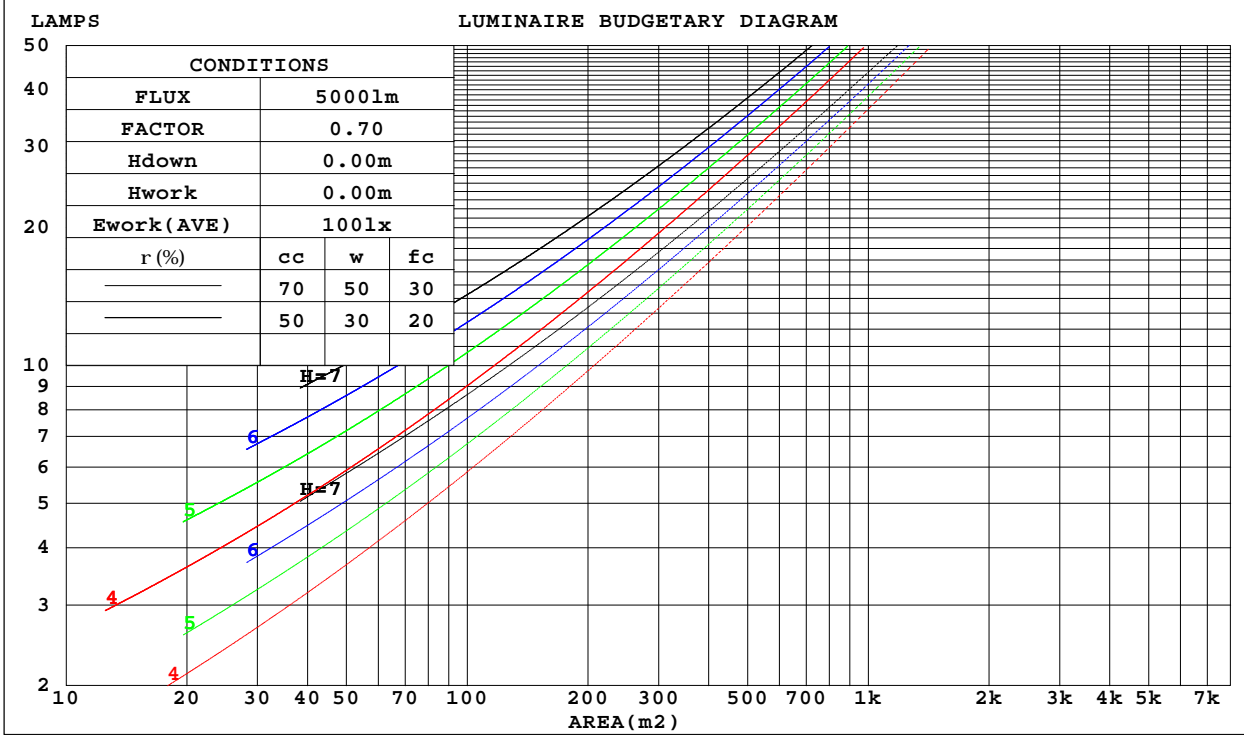
C Range: 0 - 360DEG
 C Interval: 22.5DEG
 Test Speed: HIGH
 Temperature: 25.3DEG
 Operators: wxc
 Test Date: 2020-08-14

G Range: 0 - 180DEG
 G Interval: 1.0DEG
 Test System: EVERFINE GO-SPEX500_V1 SYSTEM V2.0.405.8
 Humidity: 65.0%
 Test Distance: 3.160m [K=1.0000]
 Remarks:

CU AND LUMINAIRE BUDGETARY ESTIMATE DIAGRAM

NAME: 40W LED STREET LIGHT BULB-E27	TYPE:	WEIGHT:
SPEC.:	DIM.:	SERIAL No.:
MFR.: FILUX	SUR.:	Shielding Angle:

r _{cc}	80%			70%			50%			30%			10%			0
r _w	50%	30%	10%	50%	30%	10%	50%	30%	10%	50%	30%	10%	50%	30%	10%	0
r _{fc}	20%			20%			20%			20%			20%			0
RCR	RCR:Room Cavity Ratio						Coefficients of Utilization(CU)									
0.0	1.08	1.08	1.08	.00	.00	.00	.85	.85	.85	.71	.71	.71	.59	.59	.59	.53
1.0	.86	.80	.74	.79	.73	.69	.66	.62	.58	.54	.51	.48	.43	.40	.38	.33
2.0	.72	.63	.56	.66	.58	.52	.54	.49	.43	.44	.39	.35	.34	.31	.28	.23
3.0	.61	.52	.44	.56	.48	.41	.46	.39	.34	.37	.32	.28	.29	.25	.21	.17
4.0	.53	.43	.36	.49	.40	.33	.40	.33	.27	.32	.27	.22	.25	.20	.17	.13
5.0	.47	.37	.30	.43	.34	.27	.35	.28	.23	.28	.23	.18	.22	.17	.14	.10
6.0	.41	.32	.25	.38	.29	.23	.31	.24	.19	.25	.19	.15	.19	.15	.11	.08
7.0	.37	.28	.21	.34	.25	.20	.28	.21	.16	.22	.17	.13	.17	.13	.10	.07
8.0	.33	.24	.18	.30	.22	.17	.25	.19	.14	.20	.15	.11	.16	.11	.08	.06
9.0	.30	.22	.16	.28	.20	.15	.23	.17	.12	.19	.13	.10	.14	.10	.07	.05
10.0	.27	.19	.14	.25	.18	.13	.21	.15	.11	.17	.12	.09	.13	.09	.06	.04



C Range: 0 - 360DEG
 C Interval: 22.5DEG
 Test Speed: HIGH
 Temperature:25.3DEG
 Operators:wxc
 Test Date:2020-08-14

Range: 0 - 180DEG
 Interval: 1.0DEG
 Test System:EVERFINE GO-SPEX500_V1 SYSTEM V2.0.405.8
 Humidity:65.0%
 Test Distance:3.160m [K=1.0000]
 Remarks:

WEC AND CCEC

NAME: 40W LED STREET LIGHT BULB-E27	TYPE:	WEIGHT:
SPEC.:	DIM.:	SERIAL No.:
MFR.: FILUX	SUR.:	Shielding Angle:

rcc	80%			70%			50%			30%			10%			0
rw	50%	30%	10%	50%	30%	10%	50%	30%	10%	50%	30%	10%	50%	30%	10%	0
rfc	20%			20%			20%			20%			20%			0
RCR	RCR:Room Cavity Ratio						Wall Exitance Coefficients(WEC)									
0.0																
1.0	.439	.250	.079	.418	.238	.076	.377	.216	.069	.340	.196	.063	.305	.177	.057	
2.0	.362	.198	.061	.342	.188	.058	.305	.170	.053	.271	.152	.048	.239	.135	.043	
3.0	.313	.166	.050	.295	.158	.048	.261	.141	.043	.229	.126	.039	.200	.111	.034	
4.0	.277	.144	.042	.260	.136	.040	.229	.121	.036	.200	.107	.032	.173	.094	.029	
5.0	.248	.127	.037	.233	.120	.035	.205	.107	.031	.178	.094	.028	.153	.082	.025	
6.0	.225	.113	.032	.212	.107	.031	.185	.095	.028	.161	.083	.025	.138	.072	.022	
7.0	.206	.102	.029	.194	.096	.027	.169	.086	.025	.146	.075	.022	.125	.065	.019	
8.0	.190	.093	.026	.179	.088	.025	.156	.078	.022	.135	.068	.020	.115	.059	.017	
9.0	.177	.085	.024	.166	.081	.023	.145	.071	.020	.125	.063	.018	.106	.054	.016	
10.0	.165	.079	.022	.154	.075	.021	.135	.066	.019	.116	.058	.016	.099	.050	.014	

rcc	80%			70%			50%			30%			10%			0
rw	50%	30%	10%	50%	30%	10%	50%	30%	10%	50%	30%	10%	50%	30%	10%	0
rfc	20%			20%			20%			20%			20%			0
RCR	RCR:Room Cavity Ratio						Ceiling Cavity Exitance Coefficients(CCEC)									
0.0	.550	.550	.550	.470	.470	.470	.321	.321	.321	.184	.184	.184	.059	.059	.059	
1.0	.551	.517	.486	.472	.444	.418	.323	.305	.289	.186	.177	.168	.059	.057	.054	
2.0	.546	.496	.454	.468	.427	.392	.320	.295	.274	.185	.172	.160	.059	.056	.052	
3.0	.539	.481	.435	.462	.415	.377	.317	.288	.264	.183	.168	.156	.059	.055	.051	
4.0	.532	.470	.422	.456	.406	.367	.314	.283	.258	.181	.166	.153	.058	.054	.050	
5.0	.524	.461	.414	.450	.399	.360	.310	.278	.254	.180	.163	.151	.058	.053	.050	
6.0	.517	.453	.408	.444	.393	.355	.306	.275	.251	.178	.162	.149	.057	.053	.049	
7.0	.510	.447	.403	.438	.388	.352	.303	.272	.249	.176	.160	.148	.057	.052	.049	
8.0	.503	.442	.400	.433	.383	.349	.300	.269	.248	.174	.159	.147	.056	.052	.049	
9.0	.497	.438	.398	.428	.380	.347	.296	.267	.246	.173	.158	.147	.056	.052	.049	
10.0	.491	.434	.396	.423	.377	.345	.294	.265	.245	.171	.157	.146	.056	.051	.049	

C Range: 0 - 360DEG
 C Interval: 22.5DEG
 Test Speed: HIGH
 Temperature:25.3DEG
 Operators:wxc
 Test Date:2020-08-14

g Range: 0 - 180DEG
 g Interval: 1.0DEG
 Test System:EVERFINE GO-SPEX500_V1 SYSTEM V2.0.405.8
 Humidity:65.0%
 Test Distance:3.160m [K=1.0000]
 Remarks:

UGR(Unified Glare Rating) Table

NAME: 40W LED STREET LIGHT BULB-E27		TYPE:					WEIGHT:				
SPEC.:		DIM.:					SERIAL No.:				
MFR.: FILUX		SUR.:					Shielding Angle:				
ceiling/cavity	0.7	0.7	0.5	0.5	0.3	0.7	0.7	0.5	0.5	0.3	
walls	0.5	0.3	0.5	0.3	0.3	0.5	0.3	0.5	0.3	0.3	
working plane	0.2	0.2	0.2	0.2	0.2	0.2	0.2	0.2	0.2	0.2	
Room dimensions	Viewed crosswise					Viewed endwise					
x = 2H y = 2H	11.4	12.6	12.3	13.4	14.6	11.2	12.3	12.0	13.2	14.3	
3H	15.2	16.2	16.0	17.1	18.2	14.9	15.9	15.7	16.8	18.0	
4H	17.2	18.2	18.1	19.1	20.3	16.9	17.9	17.8	18.8	20.0	
6H	19.5	20.4	20.3	21.3	22.5	19.1	20.1	20.0	21.0	22.2	
8H	20.7	21.6	21.6	22.5	23.7	20.3	21.2	21.2	22.2	23.4	
12H	22.1	22.9	23.0	23.9	25.1	21.7	22.6	22.6	23.5	24.7	
4H 2H	12.5	13.5	13.4	14.4	15.6	12.3	13.3	13.2	14.2	15.4	
3H	16.3	17.2	17.2	18.1	19.3	16.0	16.9	16.9	17.8	19.0	
4H	18.5	19.3	19.4	20.2	21.4	18.2	19.0	19.1	19.9	21.1	
6H	20.8	21.6	21.8	22.5	23.8	20.5	21.2	21.5	22.2	23.4	
8H	22.2	22.8	23.1	23.8	25.1	21.8	22.5	22.8	23.5	24.7	
12H	23.6	24.3	24.6	25.3	26.5	23.3	23.9	24.3	24.9	26.2	
8H 4H	19.2	19.8	20.1	20.8	22.1	18.9	19.6	19.9	20.6	21.8	
6H	21.8	22.4	22.8	23.4	24.7	21.5	22.1	22.5	23.1	24.4	
8H	23.3	23.8	24.3	24.8	26.1	23.0	23.5	24.0	24.5	25.8	
12H	25.0	25.5	26.0	26.5	27.8	24.7	25.1	25.7	26.1	27.5	
12H 4H	19.4	20.0	20.3	21.0	22.3	19.2	19.8	20.1	20.8	22.1	
6H	22.1	22.6	23.1	23.6	24.9	21.9	22.4	22.8	23.4	24.7	
8H	23.7	24.2	24.7	25.2	26.5	23.4	23.9	24.4	24.9	26.2	
Variations with the observer position at spacings:											
S = 1.0H	+ 0.1 / - 0.1					+ 0.1 / - 0.1					
1.5H	+ 0.2 / - 0.3					+ 0.2 / - 0.3					
2.0H	+ 0.3 / - 0.4					+ 0.3 / - 0.4					

CIE Pub.117, 4941 lm Total Lamp Luminous Flux Correct (8log(F/F0) = 5.6)

C Range: 0 - 360DEG
 C Interval: 22.5DEG
 Test Speed: HIGH
 Temperature: 25.3DEG
 Operators: wxc
 Test Date: 2020-08-14

g Range: 0 - 180DEG
 g Interval: 1.0DEG
 Test System: EVERFINE GO-SPEX500_V1 SYSTEM V2.0.405.8
 Humidity: 65.0%
 Test Distance: 3.160m [K=1.0000]
 Remarks:

UTILIZATION FACTORS TABLE

NAME: 40W LED STREET LIGHT BULB-E27	TYPE:	WEIGHT:
SPEC.:	DIM.:	SERIAL No.:
MFR.: FILUX	SUR.:	Shielding Angle:

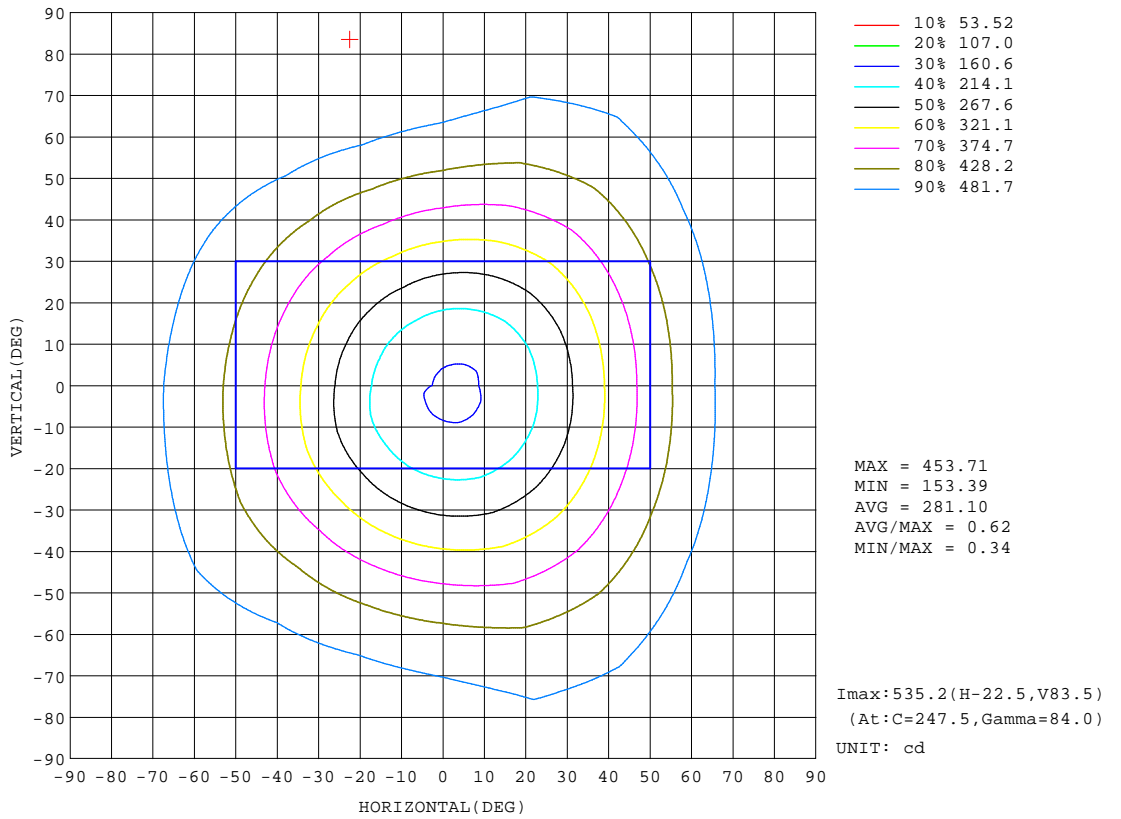
REFLECTANCE										
Ceiling	0.8	0.8	0.8	0.7	0.7	0.7	0.5	0.5	0.5	0
Walls	0.7	0.5	0.3	0.7	0.5	0.3	0.7	0.5	0.3	0
Working plane	0.2	0.2	0.2	0.2	0.2	0.2	0.2	0.2	0.2	0
ROOM INDEX	UTILIZATION FACTORS(PERCENT) $k(RI) \times RCR = 5$									
k = 0.60	34	21	14	33	20	13	29	19	12	5
0.80	43	28	20	40	27	19	36	24	17	8
1.00	50	35	25	46	33	24	41	31	22	10
1.25	56	41	31	53	39	30	46	34	27	13
1.50	62	47	37	58	44	35	50	39	31	16
2.00	70	56	46	65	52	43	55	46	38	20
2.50	75	62	53	70	58	49	59	50	43	24
3.00	79	67	58	73	63	54	62	54	47	26
4.00	85	75	66	78	69	62	67	59	53	30
5.00	88	79	72	82	74	67	69	63	57	33
ROOM INDEX	UF(total)									Direct
According to DIN EN 13032-2 2004			Suspended				SHRNOM = 1.00			

C Range: 0 - 360DEG
 C Interval: 22.5DEG
 Test Speed: HIGH
 Temperature: 25.3DEG
 Operators: wxc
 Test Date: 2020-08-14

g Range: 0 - 180DEG
 Interval: 1.0DEG
 Test System: EVERFINE GO-SPEX500_V1 SYSTEM V2.0.405.8
 Humidity: 65.0%
 Test Distance: 3.160m [K=1.0000]
 Remarks:

ISOCANDELA DIAGRAM

NAME: 40W LED STREET LIGHT BULB-E27	TYPE:	WEIGHT:
SPEC.:	DIM.:	SERIAL No.:
MFR.: FILUX	SUR.:	Shielding Angle:



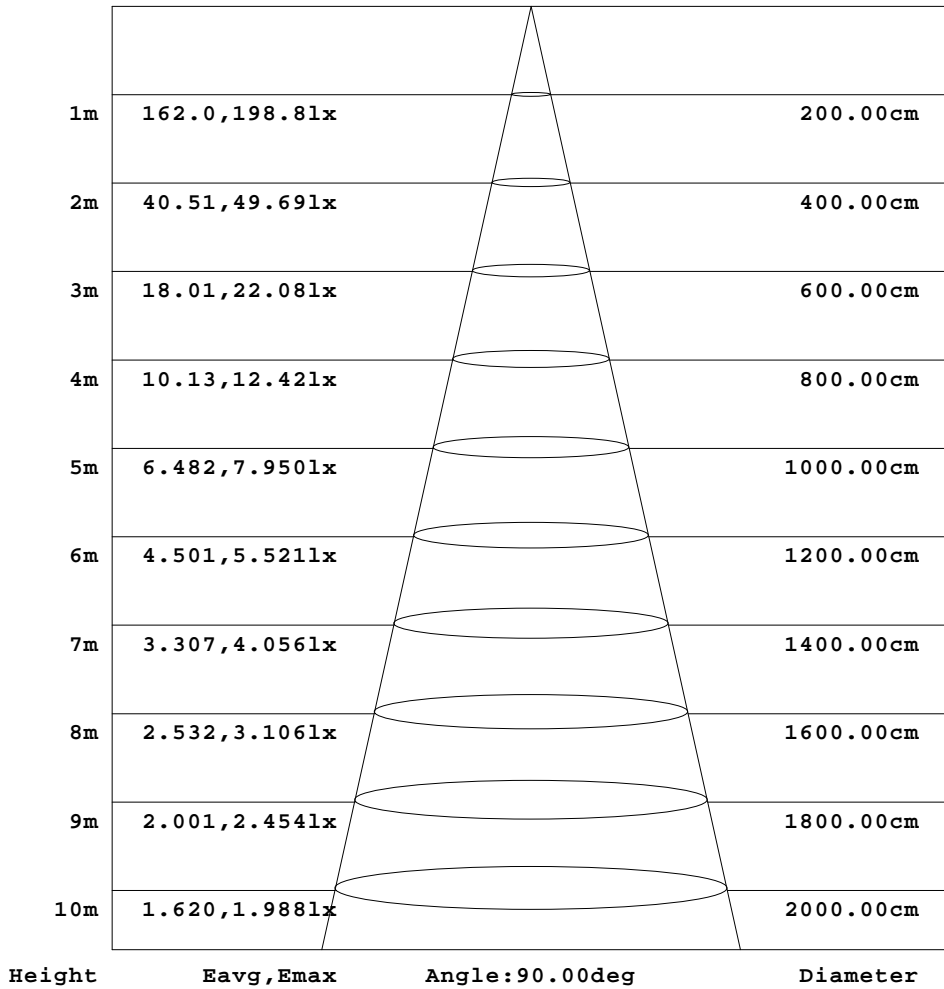
C Range: 0 - 360DEG
C Interval: 22.5DEG
Test Speed: HIGH
Temperature: 25.3DEG
Operators: wxc
Test Date: 2020-08-14

Range: 0 - 180DEG
Interval: 1.0DEG
Test System: EVERFINE GO-SPEX500_V1 SYSTEM V2.0.405.8
Humidity: 65.0%
Test Distance: 3.160m [K=1.0000]
Remarks:

AAI Figure

NAME: 40W LED STREET LIGHT BULB-E27	TYPE:	WEIGHT:
SPEC.:	DIM.:	SERIAL No.:
MFR.: FILUX	SUR.:	Shielding Angle:

Flux out:509.1 lm



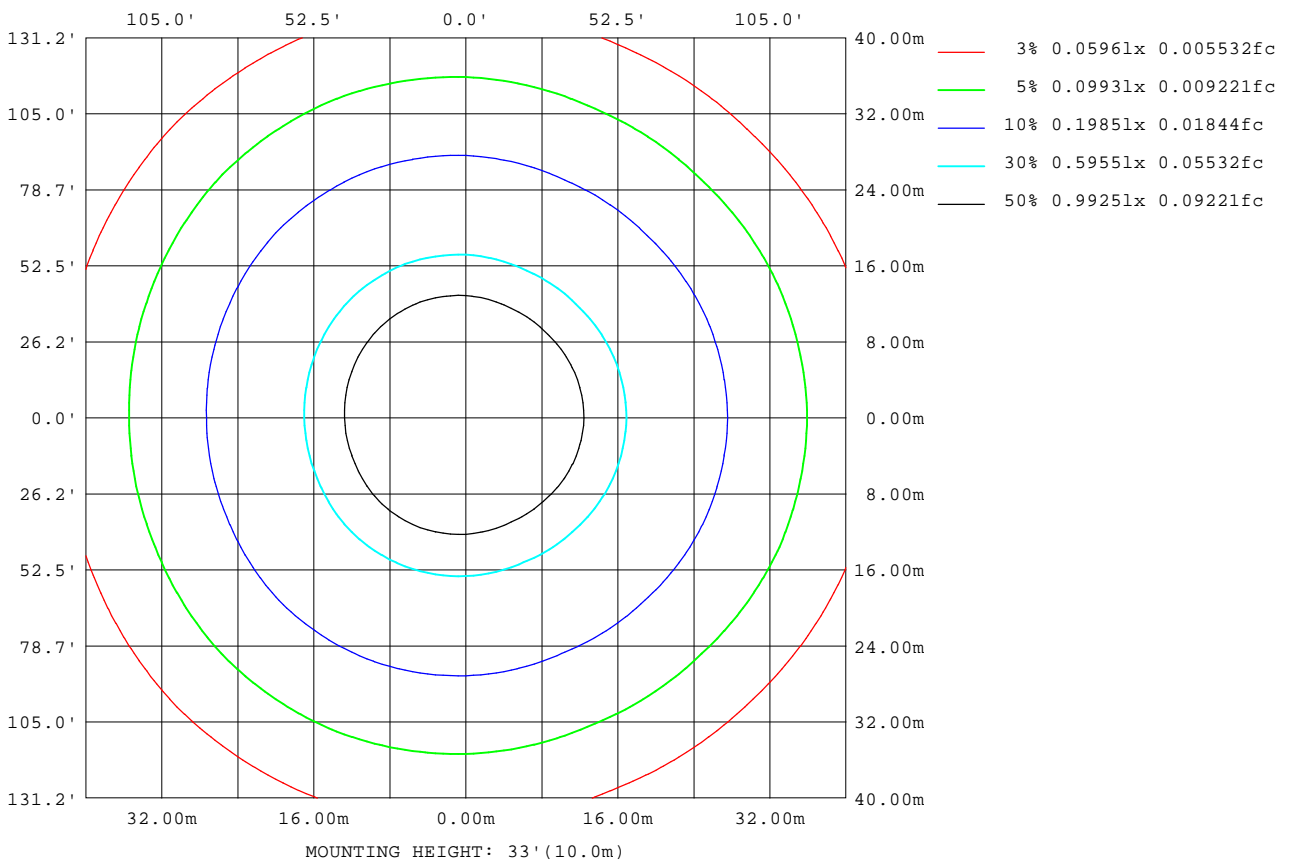
Note:The Curves indicate the illuminated area and the average illumination when the luminaire is at different distance.

C Range: 0 - 360DEG
 C Interval: 22.5DEG
 Test Speed: HIGH
 Temperature:25.3DEG
 Operators:wxc
 Test Date:2020-08-14

Range: 0 - 180DEG
 Interval: 1.0DEG
 Test System:EVERFINE GO-SPEX500_V1 SYSTEM V2.0.405.8
 Humidity:65.0%
 Test Distance:3.160m [K=1.0000]
 Remarks:

ISOLUX DIAGRAM

NAME: 40W LED STREET LIGHT BULB-E27	TYPE:	WEIGHT:
SPEC.:	DIM.:	SERIAL No.:
MFR.: FILUX	SUR.:	Shielding Angle:



C Range: 0 - 360DEG
C Interval: 22.5DEG
Test Speed: HIGH
Temperature: 25.3DEG
Operators: wxc
Test Date: 2020-08-14

Page Range: 0 - 180DEG
Page Interval: 1.0DEG
Test System: EVERFINE GO-SPEX500_V1 SYSTEM V2.0.405.8
Humidity: 65.0%
Test Distance: 3.160m [K=1.0000]
Remarks:

LED Avg.L Report

NAME: 40W LED STREET LIGHT BULB-E27	TYPE:	WEIGHT:
SPEC.:	DIM.:	SERIAL No.:
MFR.: FILUX	SUR.:	Shielding Angle:

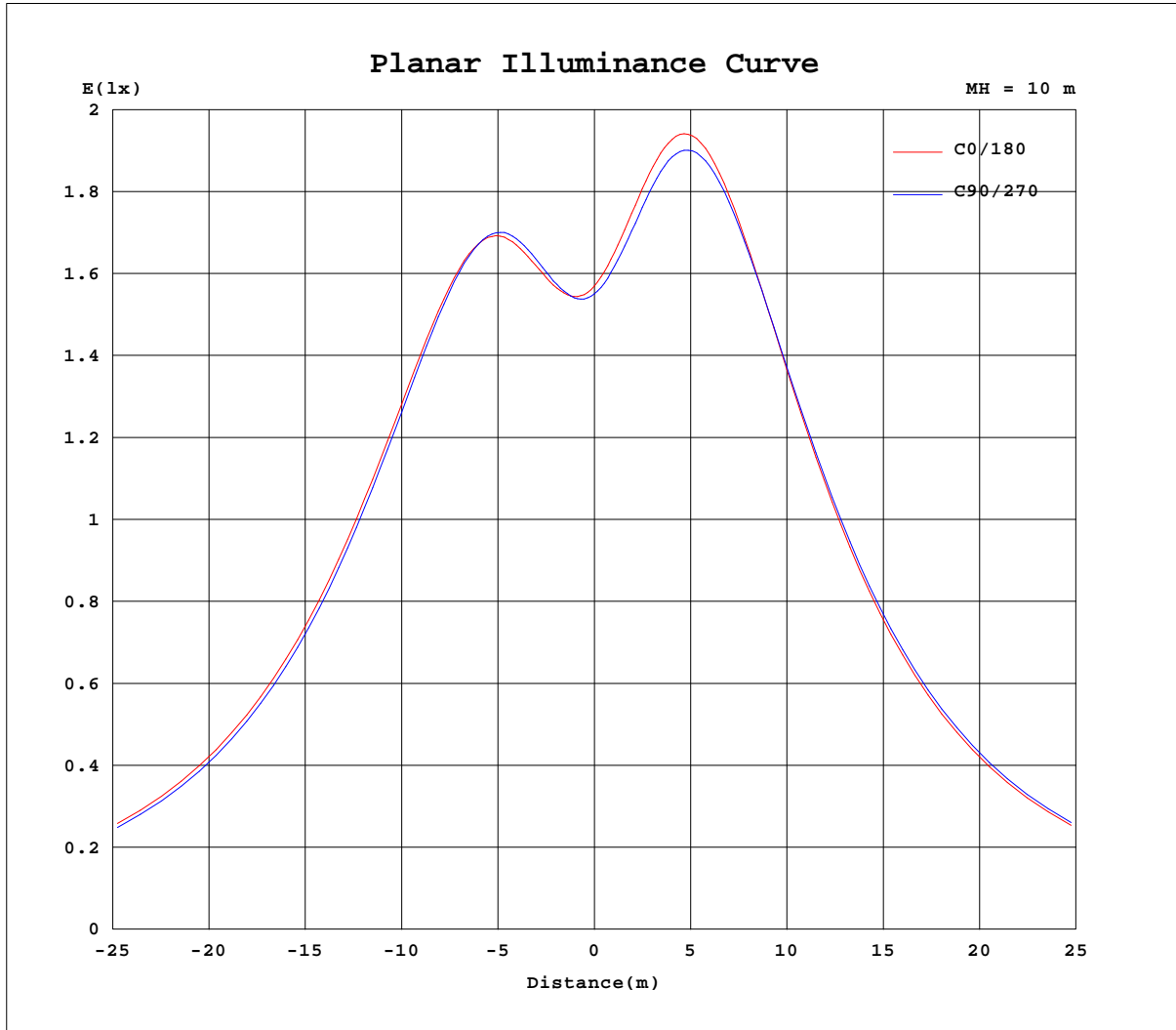
AvgL	cd/m2
L_0~180(65)av	11168
L_0~180(75)av	19350
L_0~180(85)av	58707
L_90~270(65)av	11258
L_90~270(75)av	19492
L_90~270(85)av	59010
L_45(65)av	11229
L_45(75)av	19453
L_45(85)av	58989

Standard: GB/T 29293-2012

C Range: 0 - 360DEG
 C Interval: 22.5DEG
 Test Speed: HIGH
 Temperature:25.3DEG
 Operators:wxc
 Test Date:2020-08-14

g Range: 0 - 180DEG
 g Interval: 1.0DEG
 Test System:EVERFINE GO-SPEX500_V1 SYSTEM V2.0.405.8
 Humidity:65.0%
 Test Distance:3.160m [K=1.0000]
 Remarks:

Planar Illuminance Curve



C Range: 0 - 360DEG
 C Interval: 22.5DEG
 Test Speed: HIGH
 Temperature: 25.3DEG
 Operators: wxc
 Test Date: 2020-08-14

Page Range: 0 - 180DEG
 Interval: 1.0DEG
 Test System: EVERFINE GO-SPEX500_V1 SYSTEM V2.0.405.8
 Humidity: 65.0%
 Test Distance: 3.160m [K=1.0000]
 Remarks:

LUMINOUS DISTRIBUTION INTENSITY DATA

NAME: 40W LED STREET LIGHT BULB-E27	TYPE:	WEIGHT:
SPEC.:	DIM.:	SERIAL No.:
MFR.: FILUX	SUR.:	Shielding Angle:

Table--1

UNIT: cd

C(DEG) g (DEG)	0	22.5	45	67.5	90	112.5	135	157.5	180	202.5	225	247.5	270	292.5	315	337.5			
0	155	155	155	155	155	155	155	155	155	155	155	155	155	155	155	155			
5	155	153	154	154	156	158	160	162	164	165	165	164	163	161	158	156			
10	161	159	160	161	164	168	172	176	179	181	181	180	177	173	168	165			
15	176	173	173	174	180	185	192	196	201	204	205	203	198	192	185	181			
20	197	193	193	195	201	209	217	223	227	232	233	232	225	217	208	203			
25	225	220	219	220	229	238	247	253	258	263	266	264	256	246	237	231			
30	256	251	249	250	260	270	280	286	290	297	300	299	289	278	268	263			
35	290	284	281	282	292	304	314	319	322	330	334	333	323	311	301	298			
40	325	318	314	314	325	337	348	351	353	362	368	367	357	343	333	332			
45	359	352	345	345	358	370	380	381	382	392	400	399	389	373	365	366			
50	392	385	376	374	388	401	410	410	409	420	430	429	418	401	394	399			
55	422	415	404	401	416	429	438	435	433	445	456	457	445	426	421	428			
60	449	442	429	426	442	455	462	457	453	466	480	481	468	448	444	455			
65	474	466	450	446	464	477	484	476	470	483	499	501	488	467	465	479			
70	494	487	469	464	481	496	501	490	483	496	515	516	503	482	481	498			
75	510	503	482	477	495	510	513	500	491	505	525	527	514	492	494	513			
80	522	514	492	486	504	519	521	505	495	509	530	533	520	498	501	523			
85	528	520	497	491	508	523	523	506	495	509	531	534	520	499	505	529			
90	529	522	498	491	508	523	521	502	490	503	526	530	516	496	503	529			
95	525	518	494	486	503	517	514	494	481	493	517	521	507	488	497	524			
100	516	509	485	477	493	506	502	481	467	479	502	507	494	476	487	514			
105	502	496	471	464	478	490	485	463	450	460	483	488	476	459	471	499			
110	484	477	454	446	459	470	464	442	428	438	460	465	454	439	452	480			
115	461	455	432	425	436	446	438	417	403	412	433	438	428	415	429	456			
120	434	429	408	401	410	419	410	390	376	383	402	407	399	389	403	429			
125	404	399	380	373	381	388	378	359	346	352	369	374	367	359	374	399			
130	371	367	350	343	349	354	345	327	314	318	334	339	334	328	342	366			
135	336	333	318	312	316	319	309	293	281	284	297	302	299	295	309	331			
140	299	297	285	279	281	282	273	258	248	249	260	264	263	262	276	294			
145	261	261	251	246	246	245	235	223	215	215	223	226	227	228	241	257			
150	224	224	217	213	211	209	199	190	183	182	187	190	193	196	208	220			
155	188	190	185	182	178	174	166	158	153	151	154	156	161	166	176	185			
160	154	157	154	152	148	143	135	129	126	123	124	126	132	137	146	152			
165	124	127	127	125	121	113	105	101	102	98.3	94.3	97.5	106	112	118	122			
170	93.8	97.7	101	101	96.2	85.5	74.5	70.1	78.8	74.4	66.5	70.6	82.9	90.4	92.9	92.8			
175	57.1	58.1	64.7	69.2	62.6	51.7	44.2	40.2	27.0	28.7	33.3	35.9	45.7	55.2	59.9	57.4			
180	1.89	1.89	1.88	1.88	1.88	1.87	1.86	1.86	1.89	1.88	1.88	1.88	1.88	1.86	1.85	1.85			

C Range: 0 - 360DEG
 C Interval: 22.5DEG
 Test Speed: HIGH
 Temperature: 25.3DEG
 Operators: wxc
 Test Date: 2020-08-14

g Range: 0 - 180DEG
 Interval: 1.0DEG
 Test System: EVERFINE GO-SPEX500_V1 SYSTEM V2.0.405.8
 Humidity: 65.0%
 Test Distance: 3.160m [K=1.0000]
 Remarks: