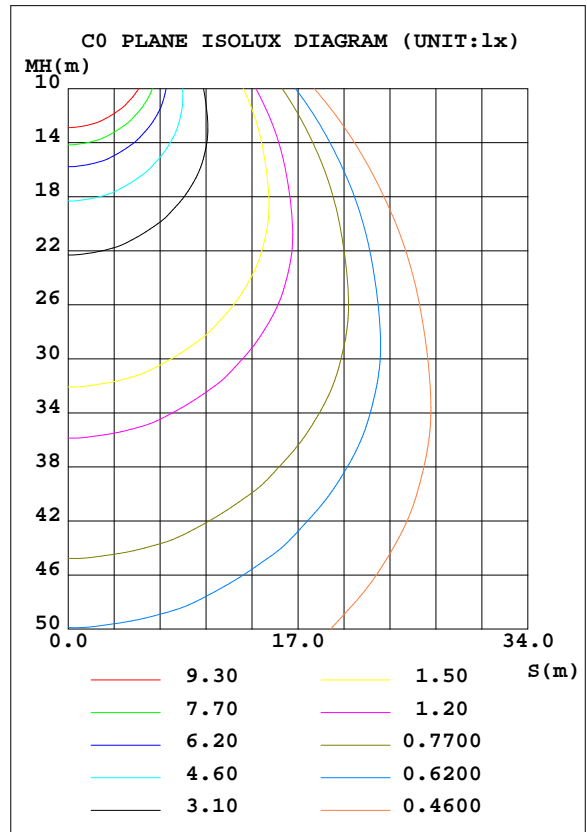
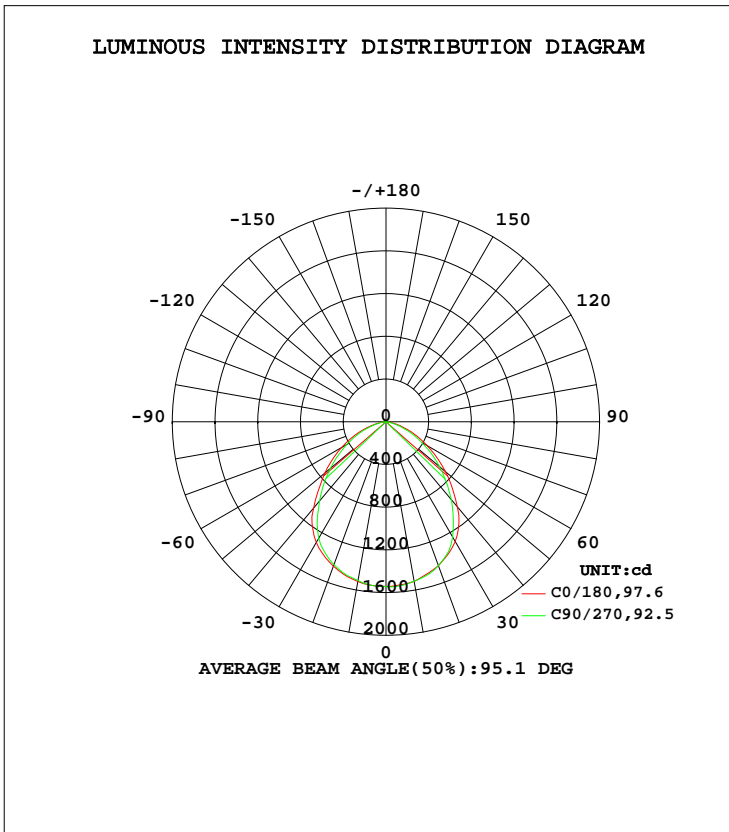


LUMINAIRE PHOTOMETRIC TEST REPORT

Test:U:220.43V I:0.1664A P:35.385W PF:0.9647 Freq:50.01Hz Lamp Flux:3568.8x1 lm		
NAME: F9085-38W-4000K	TYPE:	WEIGHT:
SPEC.: 38W	DIM.:	SERIAL No.:
MFR.: FILUX	SUR.: 150*80mm	Shielding Angle:

DATA OF LAMP		PHOTOMETRIC DATA Eff: 100.86 lm/W			
MODEL	F9085-38W-4000K	I _{max} (cd)	1548	S/MH(C0/180)	1.25
NOMINAL POWER(W)	38	LOR(%)	100.0	S/MH(C90/270)	1.21
RATED VOLTAGE(V)	220-240	TOTAL FLUX(lm)	3568.8	η UP, DN(C0-180)	0.4, 48.9
NOMINAL FLUX(lm)	3568.8	CIE CLASS	DIRECT	η UP, DN(C180-360)	0.3, 50.4
LAMPS INSIDE	1	η up(%)	0.7	CIBSE SHR NOM	1.25
TEST VOLTAGE(V)		η down(%)	99.3	CIBSE SHR MAX	1.35



C Range: 0 - 360DEG
 C Interval: 45.0DEG
 Test Speed: MEDIUM
 Temperature:25DEG
 Operators:
 Test Date:2020-08-14

γ Range: 0 - 180DEG
 γ Interval: 2.0DEG
 Test System:EVERFINE GO-2000B_V1 SYSTEM V2.00.428
 Humidity:65.0%
 Test Distance:7.250m [K=1.0000]
 Remarks:

ZONAL FLUX DIAGRAM

ZONAL FLUX DIAGRAM:

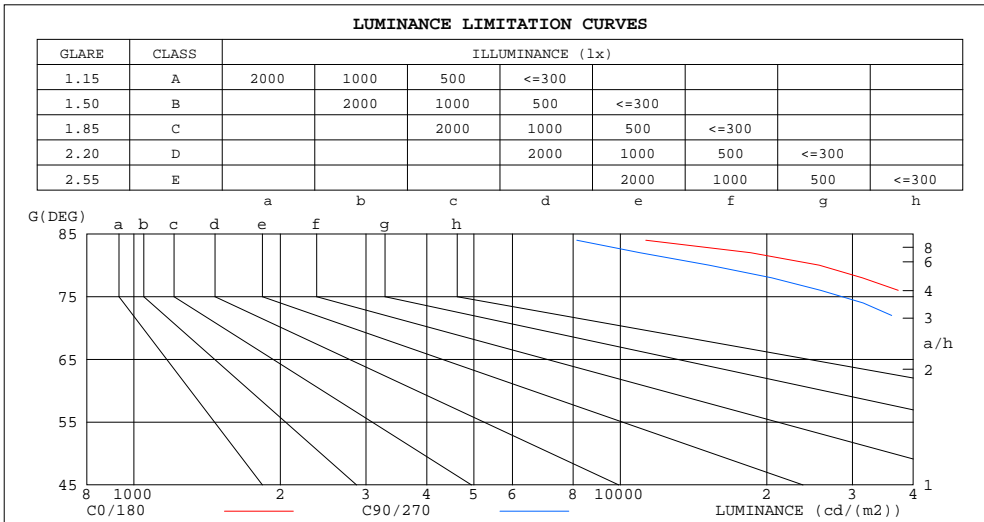
γ	C0	C45	C90	C135	C180	C225	C270	C315	γ	Φ zone	Φ total	Φ lum,lamp
10	1518	1513	1516	1522	1518	1516	1510	1510	0- 10	146.1	146.1	4.09,4.09
20	1436	1436	1434	1441	1440	1430	1424	1425	10- 20	418.2	564.4	15.8,15.8
30	1296	1284	1248	1285	1305	1280	1259	1278	20- 30	629.2	1194	33.4,33.4
40	1041	1018	950.9	1028	1055	1035	967.3	1036	30- 40	723.0	1917	53.7,53.7
50	728.2	695.3	653.8	717.4	745.3	732.6	679.2	725.4	40- 50	663.5	2580	72.3,72.3
60	443.9	403.4	385.4	427.6	477.3	452.1	420.4	435.0	50- 60	506.3	3086	86.5,86.5
70	212.8	192.7	168.4	206.6	238.3	229.4	203.2	212.6	60- 70	310.6	3397	95.2,95.2
80	53.44	41.72	31.73	45.63	65.49	62.78	50.20	55.87	70- 80	130.1	3527	98.8,98.8
90	1.403	1.386	1.308	1.320	0.8195	0.7465	0.6769	0.7719	80- 90	17.12	3544	99.3,99.3
100	2.247	2.224	2.119	2.136	1.467	1.345	1.247	1.392	90-100	1.529	3546	99.4,99.4
110	3.234	3.218	3.125	3.137	2.333	2.064	2.074	2.229	100-110	2.337	3548	99.4,99.4
120	4.247	4.256	4.192	4.165	3.284	3.118	3.057	3.183	110-120	3.154	3551	99.5,99.5
130	5.220	5.218	5.183	5.134	4.260	4.105	4.074	4.163	120-130	3.745	3555	99.6,99.6
140	6.050	6.117	6.093	6.048	5.119	5.015	5.024	5.052	130-140	3.961	3559	99.7,99.7
150	6.781	6.929	6.898	6.859	6.074	5.973	5.843	6.017	140-150	3.756	3563	99.8,99.8
160	7.563	7.663	7.662	7.609	7.097	6.971	7.057	7.004	150-160	3.167	3566	99.9,99.9
170	8.149	8.201	8.130	8.190	7.857	7.889	7.788	7.841	160-170	2.167	3568	100,100
180	8.306	8.420	8.226	8.368	8.299	8.390	8.270	8.383	170-180	0.7804	3569	100,100
DEG	LUMINOUS INTENSITY:cd									UNIT:lm		

C Range: 0 - 360DEG
 C Interval: 45.0DEG
 Test Speed: MEDIUM
 Temperature:25DEG
 Operators:
 Test Date:2020-08-14

γ Range: 0 - 180DEG
 γ Interval: 2.0DEG
 Test System:EVERFINE GO-2000B_V1 SYSTEM V2.00.428
 Humidity:65.0%
 Test Distance:7.250m [K=1.0000]
 Remarks:

LUMINANCE LIMITATION CURVES

Test:U:220.43V I:0.1664A P:35.385W PF:0.9647 Freq:50.01Hz Lamp Flux:3568.8x1 lm		
NAME: F9085-38W-4000K	TYPE:	WEIGHT:
SPEC.: 38W	DIM.:	SERIAL No.:
MFR.: FILUX	SUR.: 150*80mm	Shielding Angle:



LUMINANCE cd/(m2)		
G (DEG)	C0/180	C90/270
85	13533	9762
80	25648	15227
75	45214	33617
70	51853	41032
65	67940	57757
60	73991	64237
55	88346	78874
50	94410	84762
45	107109	98040

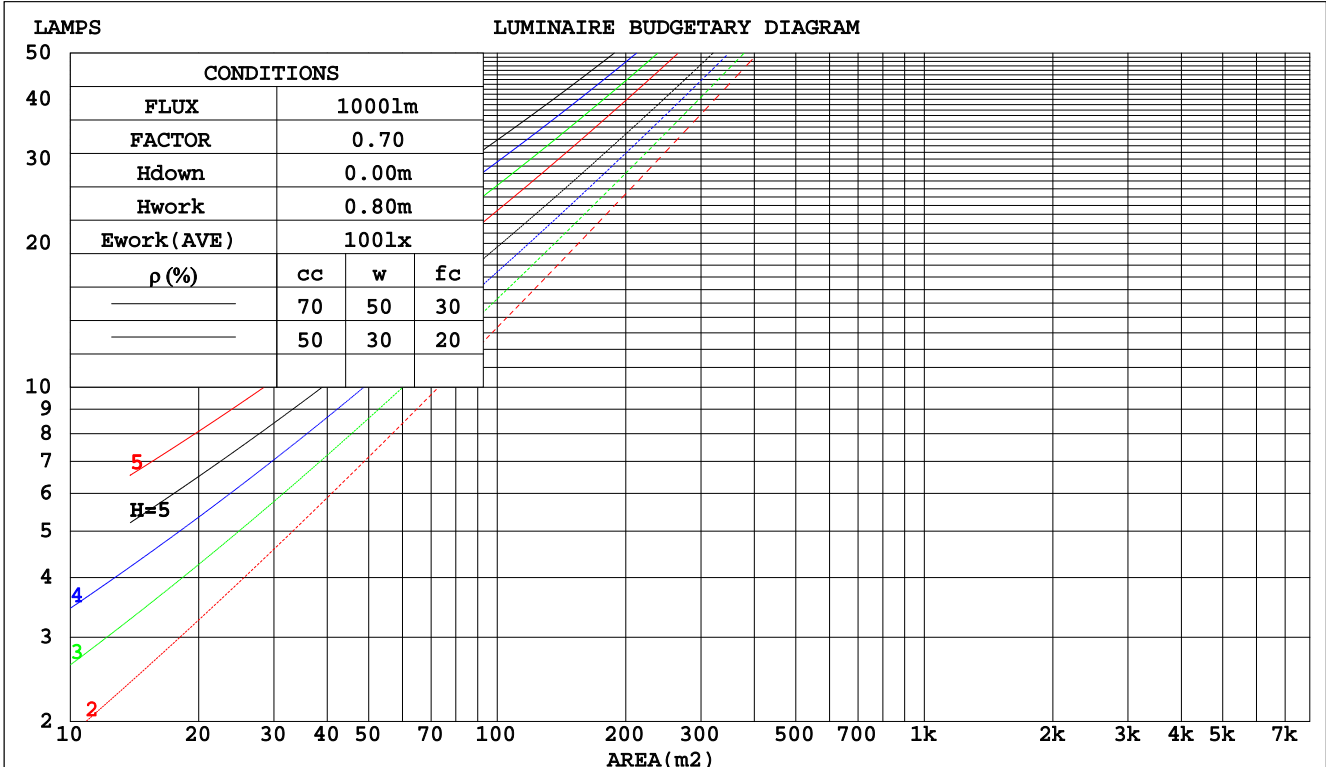
C Range: 0 - 360DEG
 C Interval: 45.0DEG
 Test Speed: MEDIUM
 Temperature: 25DEG
 Operators:
 Test Date: 2020-08-14

γ Range: 0 - 180DEG
 γ Interval: 2.0DEG
 Test System: EVERFINE GO-2000B_V1 SYSTEM V2.00.428
 Humidity: 65.0%
 Test Distance: 7.250m [K=1.0000]
 Remarks:

CU AND LUMINAIRE BUDGETARY ESTIMATE DIAGRAM

Test:U:220.43V I:0.1664A P:35.385W PF:0.9647 Freq:50.01Hz Lamp Flux:3568.8x1 lm		
NAME: F9085-38W-4000K	TYPE:	WEIGHT:
SPEC.: 38W	DIM.:	SERIAL No.:
MFR.: FILUX	SUR.: 150*80mm	Shielding Angle:

pcc	80%			70%			50%			30%			10%			0
	50%	30%	10%	50%	30%	10%	50%	30%	10%	50%	30%	10%	50%	30%	10%	0
pw																0
pfc	20%			20%			20%			20%			20%			0
RCR	RCR:Room Cavity Ratio Coefficients of Utilization(CU)															
0.0	1.19	1.19	1.19	1.16	1.16	1.16	1.11	1.11	1.11	1.06	1.06	1.06	1.01	1.01	1.01	.99
1.0	1.06	1.02	.99	1.04	1.00	.97	.99	.97	.94	.95	.93	.91	.92	.90	.88	.86
2.0	.94	.88	.83	.92	.87	.82	.89	.84	.80	.85	.81	.78	.82	.79	.76	.74
3.0	.84	.76	.70	.82	.75	.70	.79	.73	.68	.76	.71	.67	.74	.70	.66	.64
4.0	.75	.67	.61	.74	.66	.60	.71	.64	.59	.69	.63	.58	.66	.62	.58	.56
5.0	.67	.59	.53	.66	.58	.53	.64	.57	.52	.62	.56	.51	.60	.55	.51	.49
6.0	.61	.53	.47	.60	.52	.46	.58	.51	.46	.57	.50	.46	.55	.49	.45	.43
7.0	.56	.47	.42	.55	.47	.41	.53	.46	.41	.52	.45	.41	.50	.45	.40	.39
8.0	.51	.43	.37	.50	.43	.37	.49	.42	.37	.48	.41	.37	.46	.41	.37	.35
9.0	.47	.39	.34	.46	.39	.34	.45	.38	.34	.44	.38	.33	.43	.37	.33	.31
10.0	.43	.36	.31	.43	.36	.31	.42	.35	.31	.41	.35	.30	.40	.34	.30	.29



C Range: 0 - 360DEG
 C Interval: 45.0DEG
 Test Speed: MEDIUM
 Temperature: 25DEG
 Operators:
 Test Date: 2020-08-14

γ Range: 0 - 180DEG
 γ Interval: 2.0DEG
 Test System: EVERFINE GO-2000B_V1 SYSTEM V2.00.428
 Humidity: 65.0%
 Test Distance: 7.250m [K=1.0000]
 Remarks:

WEC AND CCEC

Test:U:220.43V I:0.1664A P:35.385W PF:0.9647 Freq:50.01Hz Lamp Flux:3568.8x1 lm		
NAME: F9085-38W-4000K	TYPE:	WEIGHT:
SPEC.: 38W	DIM.:	SERIAL No.:
MFR.: FILUX	SUR.: 150*80mm	Shielding Angle:

ρcc	80%			70%			50%			30%			10%			0
ρw	50%	30%	10%	50%	30%	10%	50%	30%	10%	50%	30%	10%	50%	30%	10%	0
ρfc	20%			20%			20%			20%			20%			0
RCR	RCR:Room Cavity Ratio						Wall Exitance Coefficients(WEC)									
0.0																
1.0	.265	.150	.048	.257	.147	.047	.244	.140	.045	.232	.134	.043	.220	.128	.041	
2.0	.256	.140	.043	.250	.138	.042	.238	.132	.041	.227	.127	.040	.217	.123	.039	
3.0	.242	.129	.039	.236	.126	.038	.226	.122	.037	.216	.118	.036	.207	.115	.036	
4.0	.226	.118	.035	.221	.116	.034	.212	.113	.034	.204	.109	.033	.196	.106	.032	
5.0	.212	.108	.031	.207	.106	.031	.199	.104	.031	.192	.101	.030	.185	.099	.030	
6.0	.198	.099	.028	.194	.098	.028	.187	.096	.028	.180	.094	.028	.174	.092	.027	
7.0	.186	.092	.026	.183	.091	.026	.176	.089	.026	.170	.087	.025	.164	.085	.025	
8.0	.175	.085	.024	.172	.085	.024	.166	.083	.024	.160	.081	.023	.155	.080	.023	
9.0	.165	.080	.022	.162	.079	.022	.157	.078	.022	.152	.076	.022	.147	.075	.022	
10.0	.156	.075	.021	.153	.074	.021	.148	.073	.020	.144	.071	.020	.140	.070	.020	

ρcc	80%			70%			50%			30%			10%			0
ρw	50%	30%	10%	50%	30%	10%	50%	30%	10%	50%	30%	10%	50%	30%	10%	0
ρfc	20%			20%			20%			20%			20%			0
RCR	RCR:Room Cavity Ratio						Ceiling Cavity Exitance Coefficients(CCEC)									
0.0	.196	.196	.196	.167	.167	.167	.114	.114	.114	.066	.066	.066	.021	.021	.021	
1.0	.182	.162	.143	.156	.139	.123	.107	.096	.085	.061	.055	.050	.020	.018	.016	
2.0	.173	.137	.108	.148	.118	.093	.101	.082	.065	.058	.048	.038	.019	.015	.012	
3.0	.164	.119	.084	.141	.103	.073	.097	.072	.051	.056	.042	.030	.018	.014	.010	
4.0	.157	.106	.067	.134	.091	.058	.092	.064	.041	.053	.037	.024	.017	.012	.008	
5.0	.149	.095	.055	.128	.082	.048	.088	.058	.034	.051	.034	.020	.016	.011	.007	
6.0	.142	.087	.047	.122	.075	.041	.084	.053	.029	.049	.031	.017	.016	.010	.006	
7.0	.136	.080	.040	.117	.069	.035	.081	.048	.025	.047	.029	.015	.015	.009	.005	
8.0	.130	.074	.036	.112	.064	.031	.077	.045	.022	.045	.027	.013	.015	.009	.004	
9.0	.124	.069	.032	.107	.060	.028	.074	.042	.020	.043	.025	.012	.014	.008	.004	
10.0	.119	.065	.029	.103	.056	.025	.071	.040	.018	.041	.023	.011	.013	.008	.004	

C Range: 0 - 360DEG
 C Interval: 45.0DEG
 Test Speed: MEDIUM
 Temperature:25DEG
 Operators:
 Test Date:2020-08-14

γ Range: 0 - 180DEG
 γ Interval: 2.0DEG
 Test System:EVERFINE GO-2000B_V1 SYSTEM V2.00.428
 Humidity:65.0%
 Test Distance:7.250m [K=1.0000]
 Remarks:

UGR(Unified Glare Rating) Table

Test:U:220.43V I:0.1664A P:35.385W PF:0.9647 Freq:50.01Hz Lamp Flux:3568.8x1 lm										
NAME: F9085-38W-4000K					TYPE:			WEIGHT:		
SPEC.: 38W					DIM.:			SERIAL No.:		
MFR.: FILUX					SUR.: 150*80mm			Shielding Angle:		
ceiling/cavity	0.7	0.7	0.5	0.5	0.3	0.7	0.7	0.5	0.5	0.3
walls	0.5	0.3	0.5	0.3	0.3	0.5	0.3	0.5	0.3	0.3
working plane	0.2	0.2	0.2	0.2	0.2	0.2	0.2	0.2	0.2	0.2
Room dimensions	Viewed crosswise					Viewed endwise				
x = 2H y = 2H	23.4	24.7	23.6	25.0	25.2	22.9	24.3	23.2	24.5	24.7
3H	24.2	25.5	24.5	25.7	25.9	23.6	24.8	23.9	25.1	25.3
4H	24.4	25.6	24.7	25.9	26.1	23.7	24.9	24.0	25.2	25.4
6H	24.5	25.6	24.8	25.9	26.2	23.7	24.8	24.0	25.1	25.4
8H	24.4	25.5	24.8	25.8	26.1	23.7	24.7	24.0	25.0	25.3
12H	24.4	25.4	24.8	25.7	26.1	23.6	24.7	24.0	25.0	25.3
4H 2H	23.6	24.9	24.0	25.1	25.4	23.3	24.5	23.6	24.7	25.0
3H	24.6	25.7	25.0	26.0	26.3	24.1	25.1	24.4	25.4	25.7
4H	24.9	25.9	25.3	26.2	26.5	24.3	25.2	24.7	25.6	25.9
6H	25.0	25.9	25.4	26.2	26.6	24.3	25.2	24.7	25.5	25.9
8H	25.0	25.8	25.4	26.2	26.6	24.3	25.1	24.7	25.4	25.8
12H	25.0	25.7	25.4	26.1	26.5	24.3	25.0	24.7	25.4	25.8
8H 4H	24.9	25.7	25.4	26.1	26.5	24.3	25.1	24.8	25.5	25.9
6H	25.1	25.7	25.6	26.2	26.6	24.4	25.1	24.9	25.5	25.9
8H	25.1	25.7	25.6	26.1	26.6	24.4	25.0	24.9	25.4	25.9
12H	25.1	25.6	25.6	26.0	26.5	24.4	24.9	24.9	25.3	25.8
12H 4H	24.9	25.6	25.3	26.0	26.4	24.3	25.0	24.7	25.4	25.8
6H	25.1	25.6	25.5	26.1	26.5	24.4	25.0	24.9	25.4	25.9
8H	25.1	25.6	25.6	26.0	26.5	24.4	24.9	24.9	25.3	25.8
Variations with the observer position at spacings(CIE Pub.117):										
S = 1.0H	+ 0.4 / - 0.5					+ 0.5 / - 0.6				
1.5H	+ 0.2 / - 0.2					+ 0.2 / - 0.3				
2.0H	+ 0.8 / - 0.8					+ 0.7 / - 0.8				

CIE Pub.117, 3569 lm Total Lamp Luminous Flux Correct (8log(F/F0) = 4.4)
 Area: 0.012 m2

C Range: 0 - 360DEG
 C Interval: 45.0DEG
 Test Speed: MEDIUM
 Temperature:25DEG
 Operators:
 Test Date:2020-08-14

γ Range: 0 - 180DEG
 γ Interval: 2.0DEG
 Test System:EVERFINE GO-2000B_V1 SYSTEM V2.00.428
 Humidity:65.0%
 Test Distance:7.250m [K=1.0000]
 Remarks:

UTILIZATION FACTORS TABLE

Test:U:220.43V I:0.1664A P:35.385W PF:0.9647 Freq:50.01Hz Lamp Flux:3568.8x1 lm		
NAME: F9085-38W-4000K	TYPE:	WEIGHT:
SPEC.: 38W	DIM.:	SERIAL No.:
MFR.: FILUX	SUR.: 150*80mm	Shielding Angle:

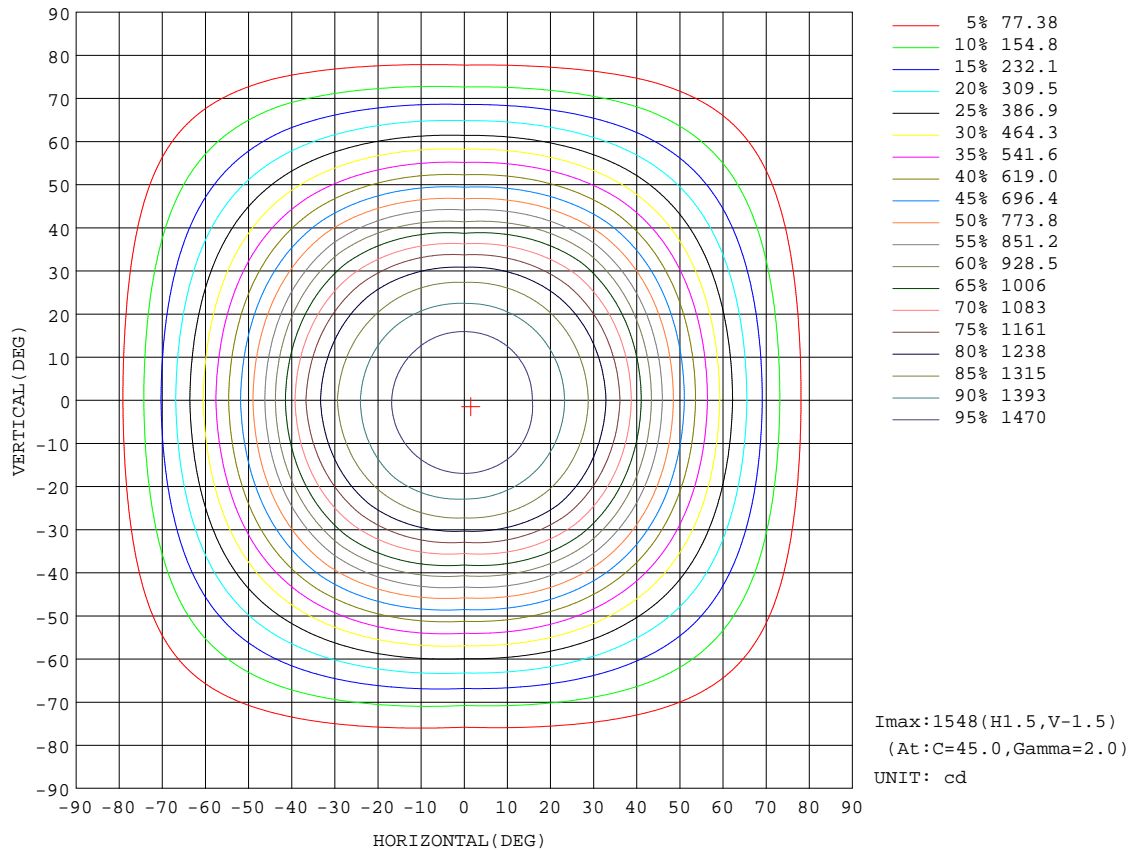
REFLECTANCE										
Ceiling	0.8	0.8	0.8	0.7	0.7	0.7	0.5	0.5	0.5	0
Walls	0.7	0.5	0.3	0.7	0.5	0.3	0.7	0.5	0.3	0
Working plane	0.2	0.2	0.2	0.2	0.2	0.2	0.2	0.2	0.2	0
ROOM INDEX	UTILIZATION FACTORS(PERCENT) $k(RI) \times RCR = 5$									
k = 0.60	63	52	45	62	52	45	61	51	45	39
0.80	73	62	56	72	62	55	70	61	55	49
1.00	81	71	65	80	71	64	78	72	64	57
1.25	88	79	72	86	78	72	84	76	71	64
1.50	92	84	78	91	83	77	88	81	76	69
2.00	99	91	86	97	90	85	93	88	83	76
2.50	102	95	90	100	94	89	96	91	87	79
3.00	105	99	94	103	97	93	99	94	91	83
4.00	108	103	99	106	102	98	102	98	95	87
5.00	110	106	103	108	104	101	103	101	98	89
ROOM INDEX	UF(total)									Direct
According to DIN EN 13032-2 2004			Suspended				SHRNOM = 1.25			

C Range: 0 - 360DEG
 C Interval: 45.0DEG
 Test Speed: MEDIUM
 Temperature:25DEG
 Operators:
 Test Date:2020-08-14

γ Range: 0 - 180DEG
 γ Interval: 2.0DEG
 Test System:EVERFINE GO-2000B_V1 SYSTEM V2.00.428
 Humidity:65.0%
 Test Distance:7.250m [K=1.0000]
 Remarks:

ISOCANDELA DIAGRAM

Test:U:220.43V I:0.1664A P:35.385W PF:0.9647 Freq:50.01Hz Lamp Flux:3568.8x1 lm		
NAME: F9085-38W-4000K	TYPE:	WEIGHT:
SPEC.: 38W	DIM.:	SERIAL No.:
MFR.: FILUX	SUR.: 150*80mm	Shielding Angle:



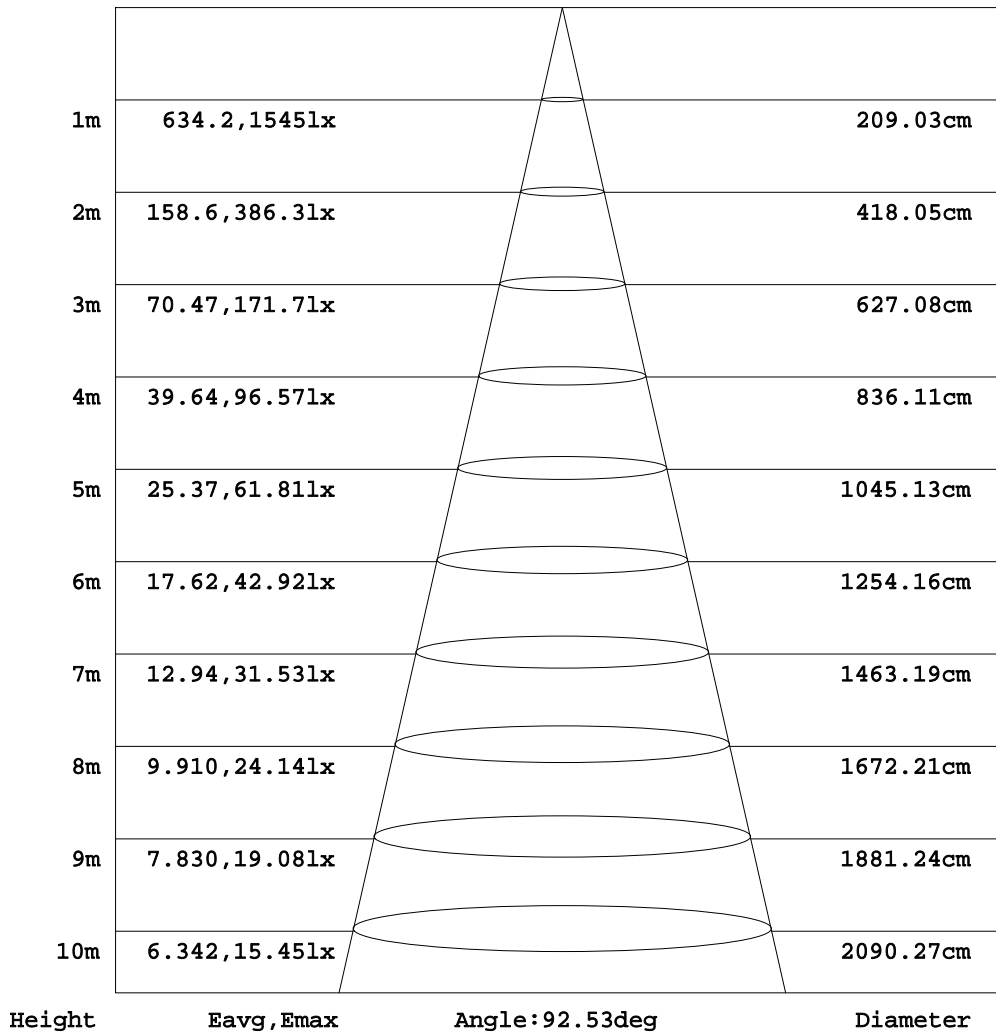
C Range: 0 - 360DEG
 C Interval: 45.0DEG
 Test Speed: MEDIUM
 Temperature: 25DEG
 Operators:
 Test Date: 2020-08-14

γ Range: 0 - 180DEG
 γ Interval: 2.0DEG
 Test System: EVERFINE GO-2000B_V1 SYSTEM V2.00.428
 Humidity: 65.0%
 Test Distance: 7.250m [K=1.0000]
 Remarks:

AAI Figure

Test:U:220.43V I:0.1664A P:35.385W PF:0.9647 Freq:50.01Hz Lamp Flux:3568.8x1 lm		
NAME: F9085-38W-4000K	TYPE:	WEIGHT:
SPEC.: 38W	DIM.:	SERIAL No.:
MFR.: FILUX	SUR.: 150*80mm	Shielding Angle:

Flux out:2458 lm



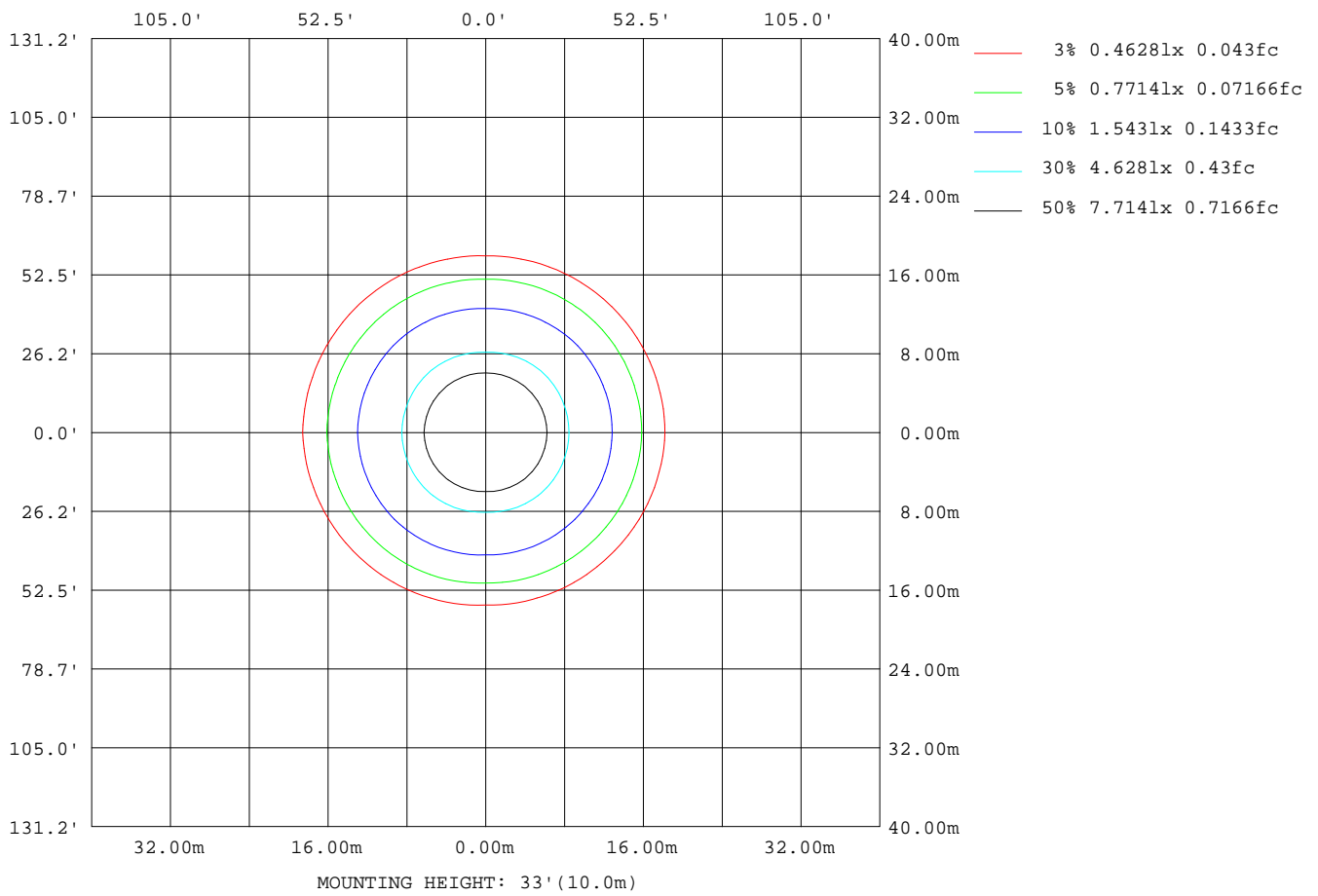
Note: The Curves indicate the illuminated area and the average illumination when the luminaire is at different distance.

C Range: 0 - 360DEG
 C Interval: 45.0DEG
 Test Speed: MEDIUM
 Temperature: 25DEG
 Operators:
 Test Date: 2020-08-14

γ Range: 0 - 180DEG
 γ Interval: 2.0DEG
 Test System: EVERFINE GO-2000B_V1 SYSTEM V2.00.428
 Humidity: 65.0%
 Test Distance: 7.250m [K=1.0000]
 Remarks:

ISOLUX DIAGRAM

Test:U:220.43V I:0.1664A P:35.385W PF:0.9647 Freq:50.01Hz Lamp Flux:3568.8x1 lm		
NAME: F9085-38W-4000K	TYPE:	WEIGHT:
SPEC.: 38W	DIM.:	SERIAL No.:
MFR.: FILUX	SUR.: 150*80mm	Shielding Angle:



C Range: 0 - 360DEG
 C Interval: 45.0DEG
 Test Speed: MEDIUM
 Temperature:25DEG
 Operators:
 Test Date:2020-08-14

γ Range: 0 - 180DEG
 γ Interval: 2.0DEG
 Test System:EVERFINE GO-2000B_V1 SYSTEM V2.00.428
 Humidity:65.0%
 Test Distance:7.250m [K=1.0000]
 Remarks:

LED Avg.L Report

Test:U:220.43V I:0.1664A P:35.385W PF:0.9647 Freq:50.01Hz Lamp Flux:3568.8x1 lm		
NAME: F9085-38W-4000K	TYPE:	WEIGHT:
SPEC.: 38W	DIM.:	SERIAL No.:
MFR.: FILUX	SUR.: 150*80mm	Shielding Angle:

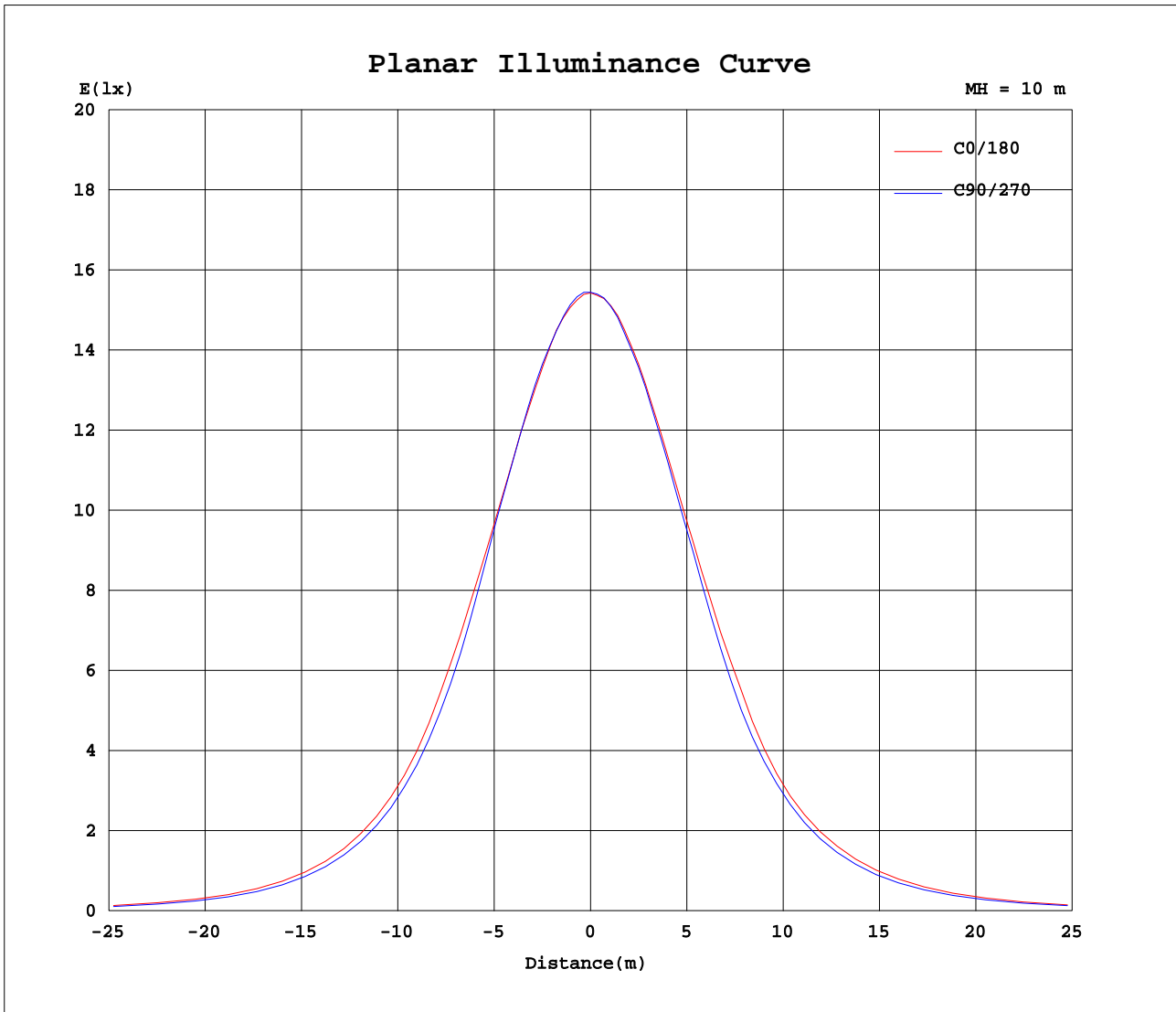
AvgL	cd/m2
L_0~180(65)av	66551
L_0~180(75)av	42849
L_0~180(85)av	10128
L_90~270(65)av	56863
L_90~270(75)av	32990
L_90~270(85)av	9163
L_45(65)av	61118
L_45(75)av	39634
L_45(85)av	9459

Standard: GB/T 29293-2012

C Range: 0 - 360DEG
 C Interval: 45.0DEG
 Test Speed: MEDIUM
 Temperature:25DEG
 Operators:
 Test Date:2020-08-14

γ Range: 0 - 180DEG
 γ Interval: 2.0DEG
 Test System:EVERFINE GO-2000B_V1 SYSTEM V2.00.428
 Humidity:65.0%
 Test Distance:7.250m [K=1.0000]
 Remarks:

Planar Illuminance Curve



C Range: 0 - 360DEG
 C Interval: 45.0DEG
 Test Speed: MEDIUM
 Temperature: 25DEG
 Operators:
 Test Date: 2020-08-14

γ Range: 0 - 180DEG
 γ Interval: 2.0DEG
 Test System: EVERFINE GO-2000B_V1 SYSTEM V2.00.428
 Humidity: 65.0%
 Test Distance: 7.250m [K=1.0000]
 Remarks:

LUMINOUS DISTRIBUTION INTENSITY DATA

Test:U:220.43V I:0.1664A P:35.385W PF:0.9647 Freq:50.01Hz Lamp Flux:3568.8x1 lm		
NAME: F9085-38W-4000K	TYPE:	WEIGHT:
SPEC.: 38W	DIM.:	SERIAL No.:
MFR.: FILUX	SUR.: 150*80mm	Shielding Angle:

Table--1

UNIT: cd

C(DEG)\ γ (DEG)	0	45	90	135	180	225	270	315											
0	1543	1545	1544	1545	1543	1545	1544	1545											
5	1536	1541	1544	1542	1540	1539	1541	1542											
10	1518	1513	1516	1522	1518	1516	1510	1510											
15	1485	1497	1495	1499	1495	1490	1486	1487											
20	1436	1436	1434	1441	1440	1430	1424	1425											
25	1384	1380	1377	1393	1394	1384	1369	1377											
30	1296	1284	1248	1285	1305	1280	1259	1278											
35	1211	1189	1128	1191	1222	1201	1152	1192											
40	1041	1018	951	1028	1055	1035	967	1036											
45	909	888	832	900	921	917	854	910											
50	728	695	654	717	745	733	679	725											
55	608	572	543	599	636	614	572	605											
60	444	403	385	428	477	452	420	435											
65	345	309	293	331	378	353	327	336											
70	213	193	168	207	238	229	203	213											
75	140	125	104	133	160	158	132	145											
80	53.4	41.7	31.7	45.6	65.5	62.8	50.2	55.9											
85	14.2	10.4	10.2	12.4	19.7	21.4	18.6	18.5											
90	1.40	1.39	1.31	1.32	0.82	0.75	0.68	0.77											
95	1.71	1.69	1.59	1.62	1.05	0.97	0.89	1.00											
100	2.25	2.22	2.12	2.14	1.47	1.35	1.25	1.39											
105	2.64	2.61	2.51	2.52	1.80	1.62	1.55	1.71											
110	3.23	3.22	3.12	3.14	2.33	2.06	2.07	2.23											
115	3.64	3.63	3.56	3.53	2.71	2.54	2.46	2.61											
120	4.25	4.26	4.19	4.16	3.28	3.12	3.06	3.18											
125	4.65	4.66	4.60	4.57	3.67	3.51	3.46	3.57											
130	5.22	5.22	5.18	5.13	4.26	4.10	4.07	4.16											
135	5.59	5.61	5.55	5.50	4.62	4.47	4.46	4.52											
140	6.05	6.12	6.09	6.05	5.12	5.02	5.02	5.05											
145	6.34	6.46	6.42	6.38	5.47	5.40	5.41	5.42											
150	6.78	6.93	6.90	6.86	6.07	5.97	5.84	6.02											
155	7.06	7.20	7.20	7.12	6.46	6.35	6.24	6.41											
160	7.56	7.66	7.66	7.61	7.10	6.97	7.06	7.00											
165	7.90	7.94	7.93	7.92	7.38	7.29	7.30	7.30											
170	8.15	8.20	8.13	8.19	7.86	7.89	7.79	7.84											
175	8.31	8.42	8.30	8.40	8.08	8.17	8.01	8.12											
180	8.31	8.42	8.23	8.37	8.30	8.39	8.27	8.38											

C Range: 0 - 360DEG
 C Interval: 45.0DEG
 Test Speed: MEDIUM
 Temperature:25DEG
 Operators:
 Test Date:2020-08-14

γ Range: 0 - 180DEG
 γ Interval: 2.0DEG
 Test System:EVERFINE GO-2000B_V1 SYSTEM V2.00.428
 Humidity:65.0%
 Test Distance:7.250m [K=1.0000]
 Remarks: